

SINCLAIR UNIT NO. 7
WATERFLOOD EOR PROJECT

ANNUAL REPORT FOR 2013

March 14, 2014

Tundra Oil and Gas Partnership

Table of Contents

Introduction	3.
Discussion	3.
Production History	3.
Waterflood Development Plan	5.
Waterflood EOR Operating Strategy and Performance	6.
Reservoir Pressure	6.
Well Servicing	6.
Waterflood Performance Discussion	6.
List of Appendices	7.
Appendix A: Sinclair Unit No. 7 Injection Pattern Summary	
Appendix B: Sinclair Unit No. 7 Reservoir Pressure Summary	
Appendix C: Sinclair Unit No. 7 Average Monthly Injection Pressure Table	
Appendix D: Injector Pattern Production Rates and Cumulative Plots and Tables for the following injectors:	

02/08-14-008-29W1

03/08-14-008-29W1

02/09-14-008-29W1

02/16-14-008-29W1

02/05-15-008-29W1

03/05-15-008-29W1

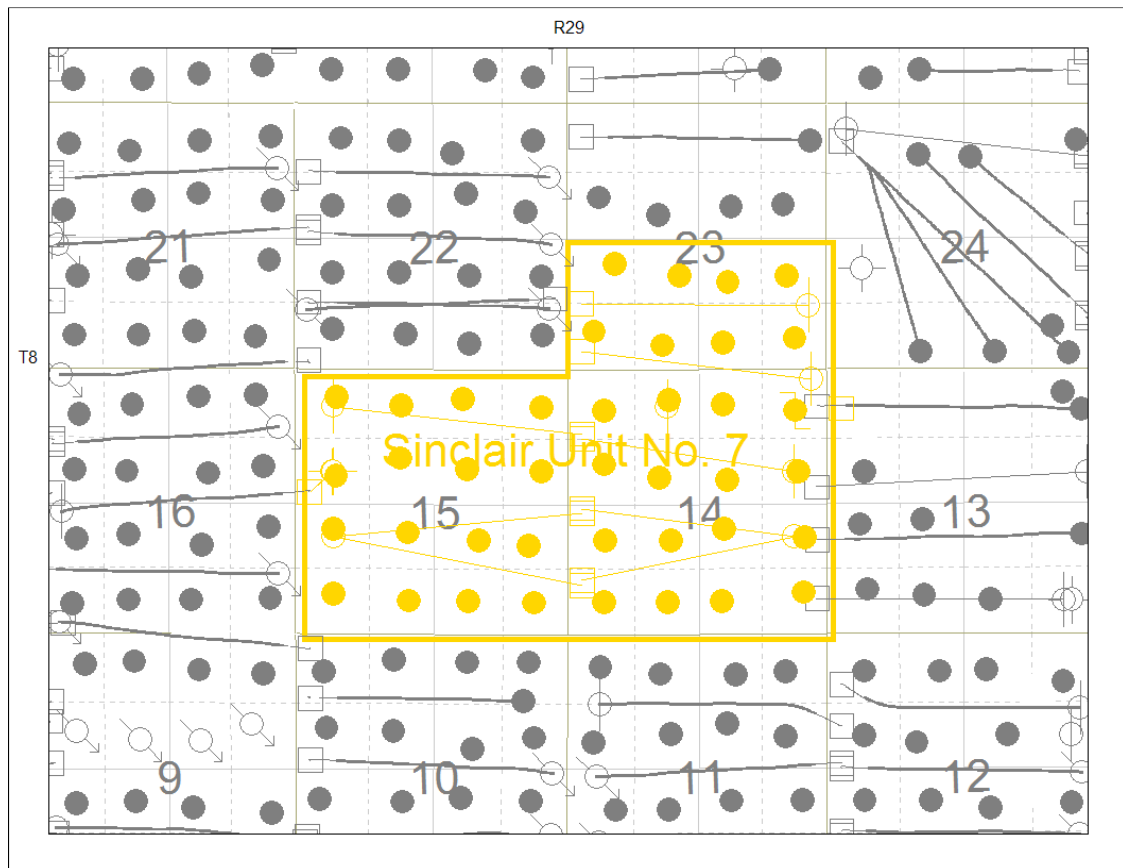
04/12-15-008-29W1

02/01-23-008-29W1

INTRODUCTION

Sinclair Unit No. 7 was approved on October 11, 2011. The Unit area contains 41 producing wells in 2½ sections in Township 8 Range 29 W1 as shown in the figure below.

Figure 1: Sinclair Unit 7 Area Outline



In accordance with Section 73 of the Manitoba Drilling and Production Regulation, Tundra hereby submits the following 2013 Annual Progress Report for Sinclair Unit No. 7.

DISCUSSION

Production History

For the wells included in Sinclair Unit No. 7, production started in March 2005 with 00/13-14-008-29W1 and 00/13-15-008-29W1. Average oil production peaked at 5.3 m³/d per well in March of 2006. This production was coming from 27 wells and totaled 142.7 m³/d for the whole Unit. In December 2013, the Unit was producing 55.56 m³/d of oil and

27.87 m³/d of water. Water injection commenced in Sinclair Unit No. 7 in August 2013. The rates and WOR are presented in Figure 2.

Figure 2: Sinclair Unit 7 Production/Injection Rates and WOR vs Time

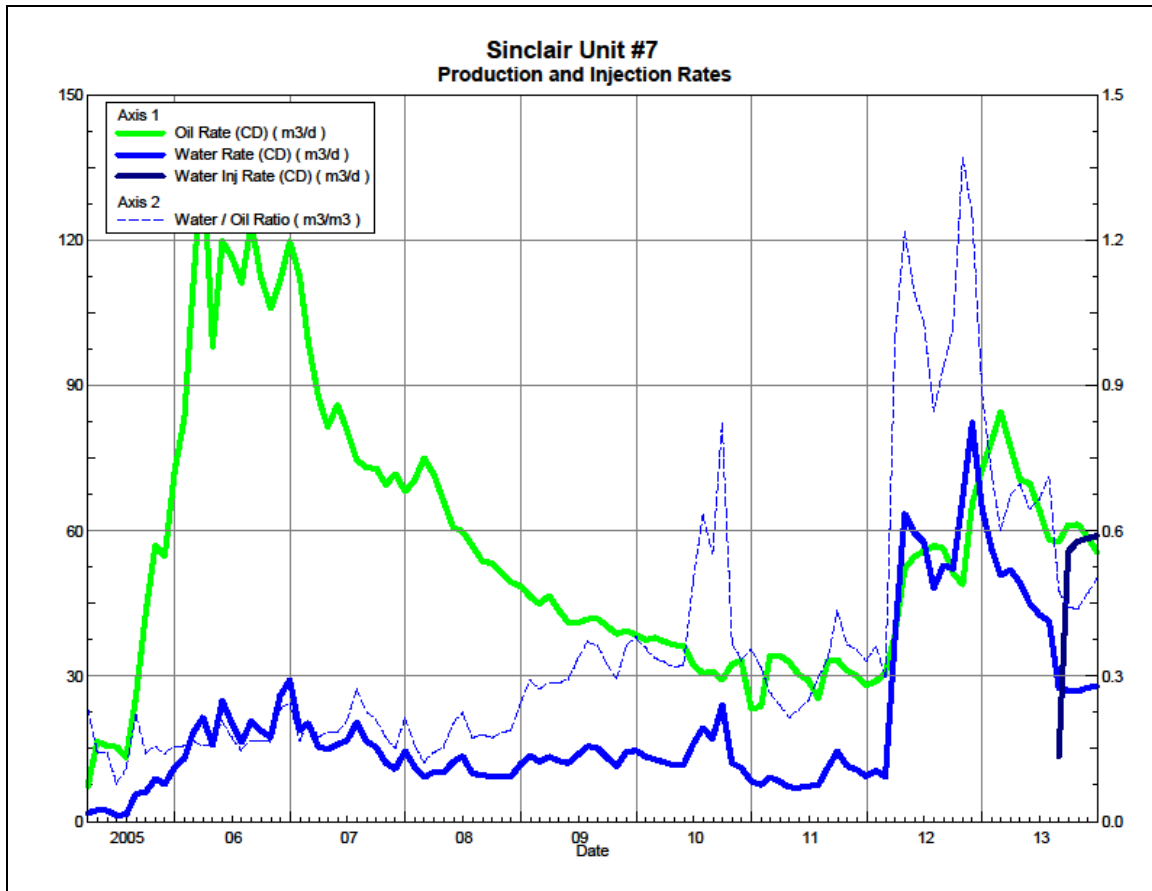
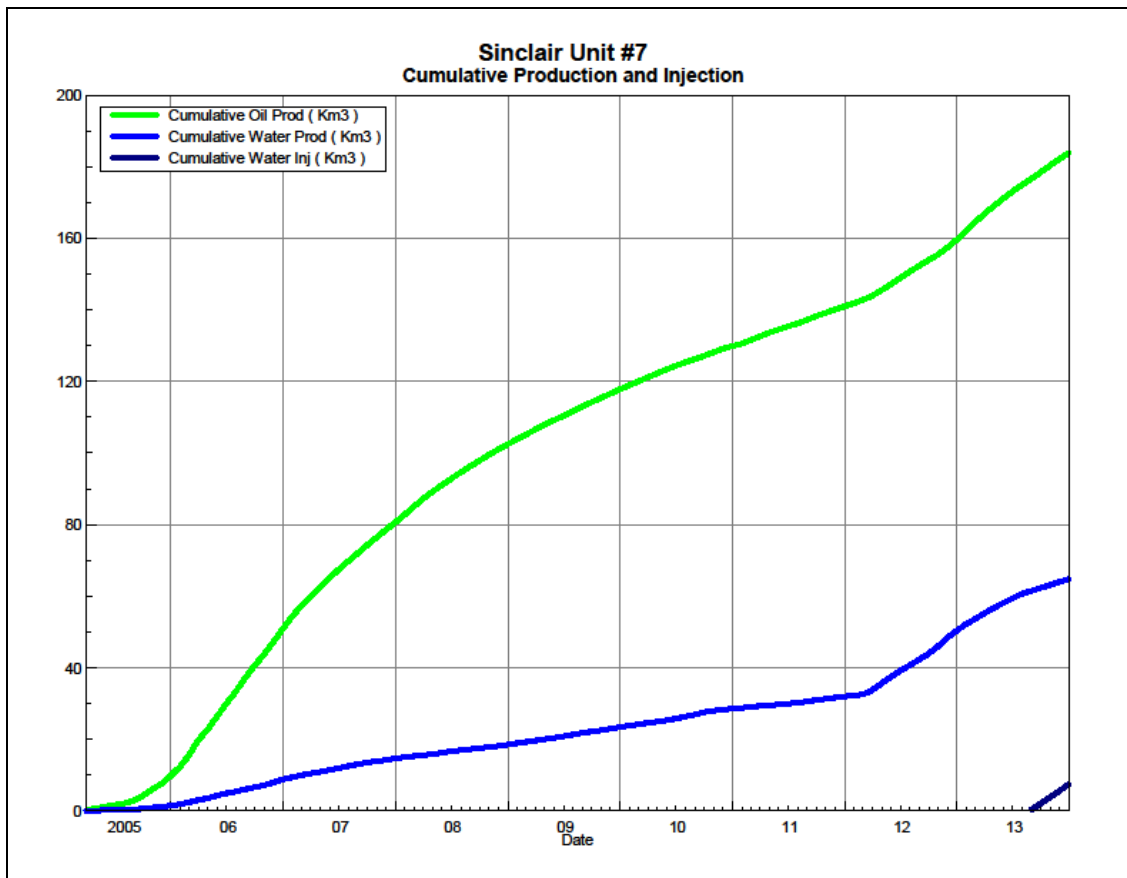


Figure 3 shows the cumulative production for Sinclair Unit 7 to the end of December 2013 as 184 E³m³ of oil, and 65 E³m³ of water, representing a 9.7% recovery factor of the OOIP.

Figure 3: Sinclair Unit 7 Cumulative Oil, Water and Water Injected vs Time



Waterflood Development Plan

Sinclair Unit No 7 Waterflood (WF) Development Plan

Unit No. 7 is still in the development phase at the end of 2013. In 2011, 2 of the 8 proposed horizontal injectors were drilled and the remaining 6 horizontal injection wells were drilled in 2012. All of the horizontal wells are fracture stimulated to improve the injection rates. In order to maximize recovery from this Unit, Tundra plans to produce all of the injectors for a short period of time to clean-up the reservoir near the wellbores prior to being converted into water injectors. Water injection commenced in Sinclair Unit No. 7 in August 2013. As of December 2013, Sinclair Unit No. 7 had 3 injection patterns in place.

Production performance by injector pattern are summarized in Appendix A.

Any future revisions to the waterflood development or surveillance plan would be based on new production or performance response data, technical studies, or observed reservoir behavior and reserves recovery interpretations.

Waterflood EOR Operating Strategy and Performance

Water Source and Quality

The injection water for Sinclair Unit No. 7 will be sourced from the 16-32-007-29W1 well (Lodgepole formation). The water is treated at the 03-04-008-29W1 battery where it is filtered to 0.5 microns and has scale inhibitor added. The injection water is then distributed to the injectors through the dedicated infrastructure system.

Injection Wellhead Pressures

Injection started in this Unit in August 2013. The monthly wellhead injection pressure for each injector is summarized in Appendix C. Since injection in this Unit is still in the early stages, the injectors are still building up to a target injection pressure of 6300 kPaa.

Reservoir Pressure

Where practical, Tundra is committed to collecting pressure data from newly drilled wells. For Sinclair Unit No. 7, pressure data taken in 2012 and 2013 from 6 locations is available. A summary table is presented in Appendix B. Pressures are corrected to a common datum of -450 m SS for comparison with other units in the area.

Well Servicing

The following table summarizes the maintenance that was required in Sinclair Unit No. 7 during 2013:

Table 1: Sinclair Unit #7 Well Servicing

100.05-14-008-29W1.00	Pump Change	2/7/2013
102.12-15-008-29W1.00	Pump Change	2/12/2013
102.12-15-008-29W1.00	Pump Change	6/18/2013
102.09-14-008-29W1.00	WIW Conversion	7/8/2013
102.01-23-008-29W1.00	WIW Conversion	7/26/2013
100.08-15-008-29W1.00	Tubing Repair	8/20/2013
102.16-14-008-29W1.00	WIW Conversion	8/22/2013
100.02-15-008-29W1.00	Pump Change	9/16/2013
102.04-15-008-29W1.00	Rod Repair	10/3/2013
103.01-14-008-29W1.00	Pump Change	12/17/2013

Waterflood Performance Discussion

At the end of 2013, Sinclair Unit No. 7 had 3 injector patterns in place. The patterns consist of an east-west horizontal injector placed between 8 vertical producers (line drive pattern), 4 to the north and 4 to the south. The 02/14-14-008-29W1 short horizontal location will remain a producer in this unit. It was drilled to improve oil recovery in this portion of the unit. Tundra plans to produce the remaining future injector wells until late 2014 instead of putting them on injection right away for the reasons given earlier.

In 2013, the 03/01-14-008-29W1/0 and 02/04-15-008-29W1/0 horizontal locations were drilled as future inter-unit injectors. It is Tundra's plan to produce these 2 locations until early 2015 and then convert them to injectors.

A summary table of the injector patterns is presented in Appendix A. Plots and tables of the production are presented in Appendix D for each of the injector patterns.

List of Appendices

Appendix A: Sinclair Unit No. 7 Injection Pattern Summary

Appendix B: Sinclair Unit No. 7 Reservoir Pressure Summary

Appendix D: Sinclair Unit No. 7 Average Monthly Injection Pressure Table

Appendix C: Injector Pattern Production Rates and Cumulatives

Plots and Tables for the following injectors:

02/08-14-008-29W1

03/08-14-008-29W1

02/09-14-008-29W1

02/16-14-008-29W1

02/05-15-008-29W1

03/05-15-008-29W1

04/12-15-008-29W1

02/01-23-008-29W1

Appendix A

Sinclair Unit No. 7 Injection Pattern Summary as of December 2013

[illegible]

APPENDIX B

Sinclair Unit #7 - Pressure Summary

Location	Test Date	Final Pressure (kPaa)	MPP (mTVD)	KB	Datum Depth	Gradient	Pressure @ -450 masl
102/08-14-008-29W1/00	July 15 - Aug 31, 2012	2528.46	952.74	520.08	-450	8.25	2672
102/09-14-008-29W1/00	January 20 - 30, 2012	4088.56	951.37	519.87	-450	8.25	4241
102/04-15-008-29W1/00	June 26 - July 23, 2013	2429.12	956.10	519.35	-450	8.25	2429
103/05-15-008-29W1/00	June 28 - Aug 18, 2012	2107.99	956.86	519.77	-450	8.25	2214
103/08-15-008-29W1/00	June 18 - Sept 6, 2012	2202.77	952.47	520.01	-450	8.25	2347
102/13-15-008-29W1/00	Jan 28 - Feb 5, 2012	2792.92	957.82	519.87	-450	8.25	2892

Appendix C

Average Monthly Injection Pressure (kPag)

Month	Injection Pressure		
	102/09-14	102/16-14	102/01-23
Jan-13	-	-	-
Feb-13	-	-	-
Mar-13	-	-	-
Apr-13	-	-	-
May-13	-	-	-
Jun-13	-	-	-
Jul-13	0	0	0
Aug-13	0	0	0
Sep-13	0	0	0
Oct-13	0	0	0
Nov-13	0	197	583
Dec-13	0	1075	1637

Appendix D
Rates and VRR
Plots and Tables

Pattern: 02/08-14-008-29Inj Set: SinclairUnit#7

Oil Formation Vol Factor : 1.07100 m3/m3

Water Formation Vol Factor : 1.00150 m3/m3

Water / Oil Ratio : 0.61 m3/m3

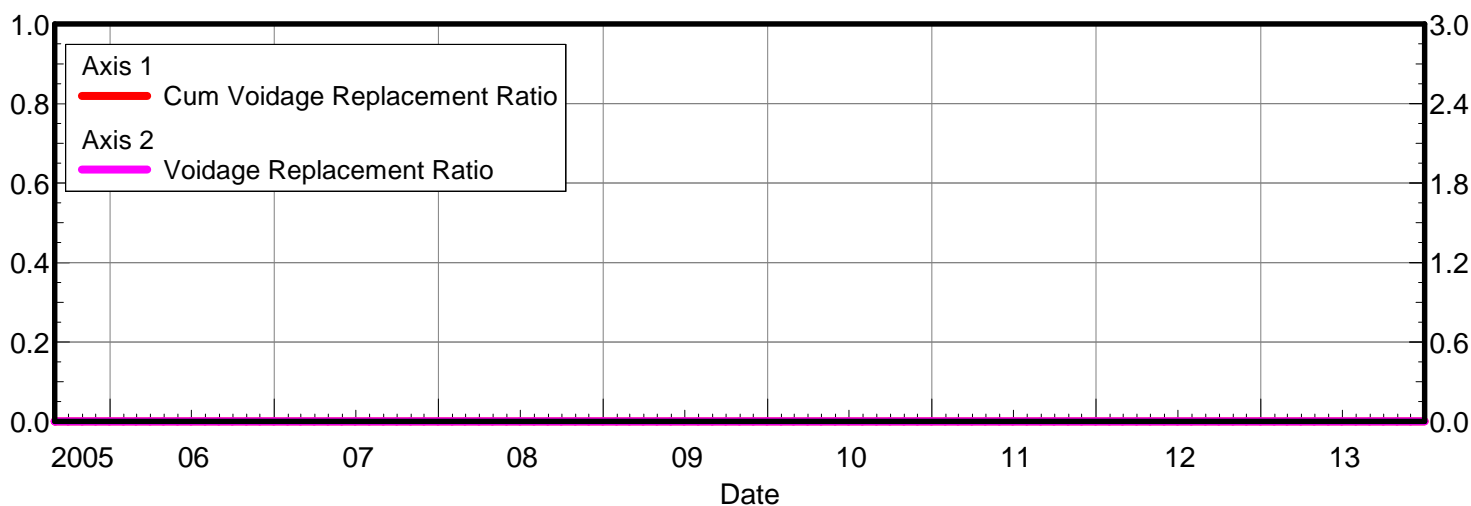
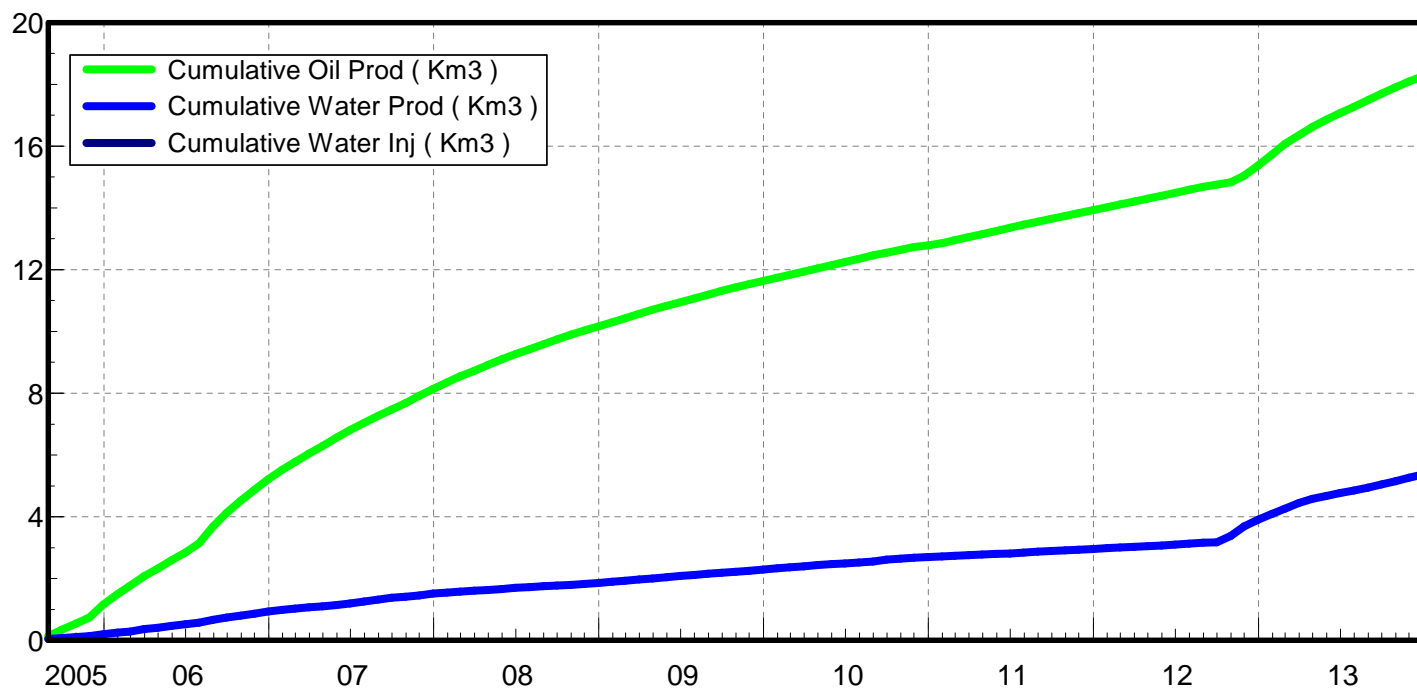
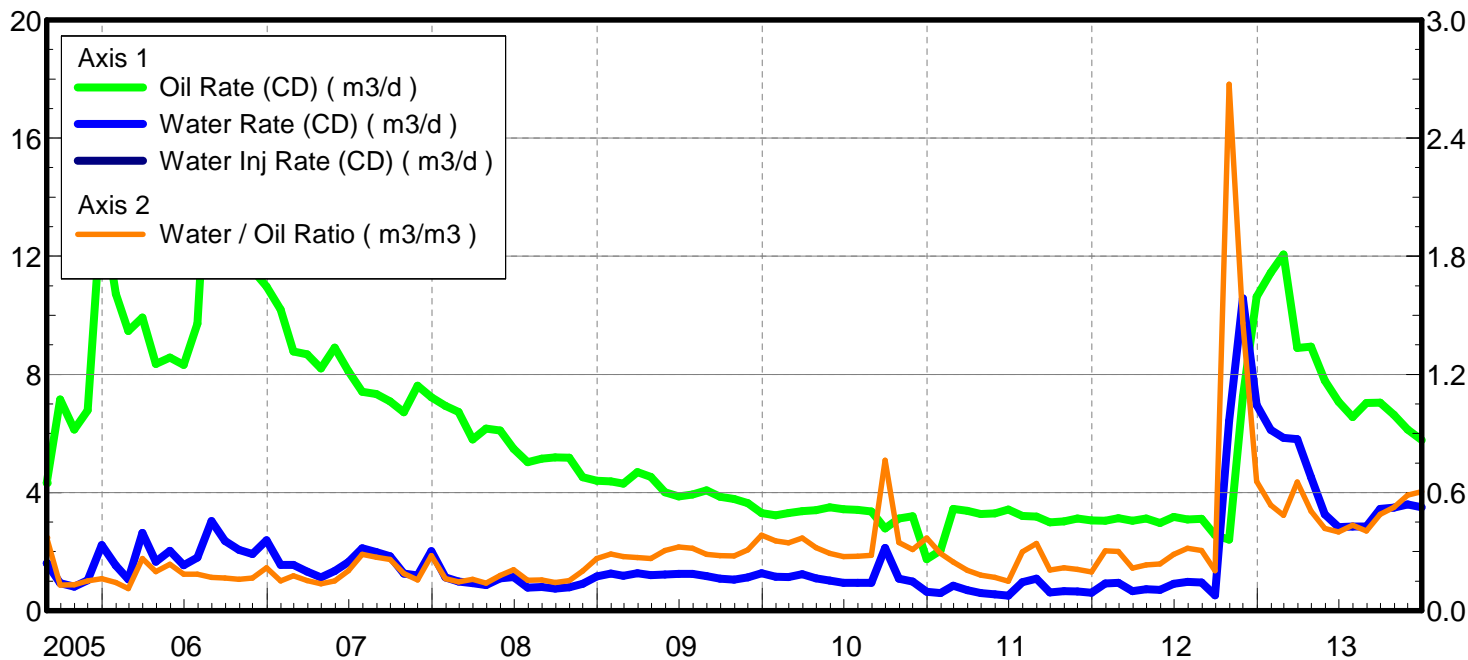
March 12, 2014

Operator: Tundra_O&G_Prtshp

Oil Rate (CD) : 5.78 m3/d

Water Rate (CD) : 3.50 m3/d

Water Inj Rate (CD) : * m3/d



Date	Oil Rate (CD) m3/d	Water Rate (CD) m3/d	Water Oil Ratio m3/m3	Water Inj Rate (CD) m3/d	Cum Oil Prod Km3	Cum Water Prod Km3	Cum Water Inj Km3	Voidage Replacement Ratio	Cum Voidage Replacemt Ratio
8/31/2005	4.32	1.60	0.37		0.13	0.05	0.00	0.000	0.000
9/30/2005	7.15	0.93	0.13		0.35	0.08	0.00	0.000	0.000
10/31/2005	6.13	0.81	0.13		0.54	0.10	0.00	0.000	0.000
11/30/2005	6.78	1.03	0.15		0.74	0.13	0.00	0.000	0.000
12/31/2005	13.72	2.23	0.16		1.17	0.20	0.00	0.000	0.000
1/31/2006	10.73	1.53	0.14		1.50	0.25	0.00	0.000	0.000
2/28/2006	9.47	1.06	0.11		1.76	0.28	0.00	0.000	0.000
3/31/2006	9.93	2.63	0.26		2.07	0.36	0.00	0.000	0.000
4/30/2006	8.36	1.66	0.20		2.32	0.41	0.00	0.000	0.000
5/31/2006	8.57	2.03	0.24		2.59	0.47	0.00	0.000	0.000
6/30/2006	8.32	1.54	0.18		2.84	0.52	0.00	0.000	0.000
7/31/2006	9.72	1.80	0.18		3.14	0.58	0.00	0.000	0.000
8/31/2006	17.87	3.03	0.17		3.69	0.67	0.00	0.000	0.000
9/30/2006	14.30	2.37	0.17		4.12	0.74	0.00	0.000	0.000
10/31/2006	12.93	2.05	0.16		4.52	0.80	0.00	0.000	0.000
11/30/2006	11.54	1.92	0.17		4.87	0.86	0.00	0.000	0.000
12/31/2006	10.97	2.39	0.22		5.21	0.94	0.00	0.000	0.000
1/31/2007	10.19	1.55	0.15		5.53	0.98	0.00	0.000	0.000
2/28/2007	8.78	1.55	0.18		5.77	1.03	0.00	0.000	0.000
3/31/2007	8.68	1.32	0.15		6.04	1.07	0.00	0.000	0.000
4/30/2007	8.21	1.13	0.14		6.29	1.10	0.00	0.000	0.000
5/31/2007	8.90	1.35	0.15		6.56	1.14	0.00	0.000	0.000
6/30/2007	8.10	1.65	0.20		6.81	1.19	0.00	0.000	0.000
7/31/2007	7.41	2.12	0.29		7.04	1.26	0.00	0.000	0.000
8/31/2007	7.34	1.99	0.27		7.26	1.32	0.00	0.000	0.000
9/30/2007	7.09	1.85	0.26		7.48	1.38	0.00	0.000	0.000
10/31/2007	6.72	1.26	0.19		7.68	1.42	0.00	0.000	0.000
11/30/2007	7.62	1.20	0.16		7.91	1.45	0.00	0.000	0.000
12/31/2007	7.22	2.01	0.28		8.14	1.51	0.00	0.000	0.000
1/31/2008	6.93	1.13	0.16		8.35	1.55	0.00	0.000	0.000
2/29/2008	6.73	0.98	0.15		8.55	1.58	0.00	0.000	0.000
3/31/2008	5.79	0.93	0.16		8.73	1.61	0.00	0.000	0.000
4/30/2008	6.16	0.86	0.14		8.91	1.63	0.00	0.000	0.000
5/31/2008	6.10	1.09	0.18		9.10	1.67	0.00	0.000	0.000
6/30/2008	5.49	1.14	0.21		9.26	1.70	0.00	0.000	0.000
7/31/2008	5.03	0.78	0.16		9.42	1.72	0.00	0.000	0.000
8/31/2008	5.15	0.80	0.16		9.58	1.75	0.00	0.000	0.000
9/30/2008	5.20	0.74	0.14		9.74	1.77	0.00	0.000	0.000
10/31/2008	5.18	0.80	0.15		9.90	1.80	0.00	0.000	0.000
11/30/2008	4.52	0.91	0.20		10.03	1.82	0.00	0.000	0.000
12/31/2008	4.40	1.16	0.26		10.17	1.86	0.00	0.000	0.000
1/31/2009	4.37	1.26	0.29		10.30	1.90	0.00	0.000	0.000
2/28/2009	4.30	1.18	0.28		10.42	1.93	0.00	0.000	0.000
3/31/2009	4.69	1.27	0.27		10.57	1.97	0.00	0.000	0.000
4/30/2009	4.53	1.20	0.27		10.71	2.01	0.00	0.000	0.000
5/31/2009	4.01	1.23	0.31		10.83	2.04	0.00	0.000	0.000
6/30/2009	3.87	1.25	0.32		10.95	2.08	0.00	0.000	0.000
7/31/2009	3.94	1.25	0.32		11.07	2.12	0.00	0.000	0.000

Date	Oil Rate (CD) m3/d	Water Rate (CD) m3/d	Water Oil Ratio m3/m3	Water Inj Rate (CD) m3/d	Cum Oil Prod Km3	Cum Water Prod Km3	Cum Water Inj Km3	Voidage Replacement Ratio	Cum Voidage Replacemt Ratio
8/31/2009	4.07	1.17	0.29		11.19	2.16	0.00	0.000	0.000
9/30/2009	3.86	1.08	0.28		11.31	2.19	0.00	0.000	0.000
10/31/2009	3.78	1.05	0.28		11.43	2.22	0.00	0.000	0.000
11/30/2009	3.64	1.12	0.31		11.54	2.26	0.00	0.000	0.000
12/31/2009	3.31	1.27	0.38		11.64	2.30	0.00	0.000	0.000
1/31/2010	3.23	1.15	0.35		11.74	2.33	0.00	0.000	0.000
2/28/2010	3.31	1.14	0.34		11.83	2.36	0.00	0.000	0.000
3/31/2010	3.37	1.24	0.37		11.94	2.40	0.00	0.000	0.000
4/30/2010	3.40	1.09	0.32		12.04	2.43	0.00	0.000	0.000
5/31/2010	3.50	1.02	0.29		12.15	2.47	0.00	0.000	0.000
6/30/2010	3.43	0.94	0.27		12.25	2.49	0.00	0.000	0.000
7/31/2010	3.41	0.94	0.28		12.36	2.52	0.00	0.000	0.000
8/31/2010	3.36	0.95	0.28		12.46	2.55	0.00	0.000	0.000
9/30/2010	2.78	2.13	0.76		12.54	2.62	0.00	0.000	0.000
10/31/2010	3.13	1.08	0.35		12.64	2.65	0.00	0.000	0.000
11/30/2010	3.20	0.99	0.31		12.74	2.68	0.00	0.000	0.000
12/31/2010	1.74	0.64	0.37		12.79	2.70	0.00	0.000	0.000
1/31/2011	2.04	0.59	0.29		12.85	2.72	0.00	0.000	0.000
2/28/2011	3.44	0.85	0.25		12.95	2.74	0.00	0.000	0.000
3/31/2011	3.38	0.69	0.21		13.05	2.76	0.00	0.000	0.000
4/30/2011	3.28	0.59	0.18		13.15	2.78	0.00	0.000	0.000
5/31/2011	3.29	0.55	0.17		13.25	2.80	0.00	0.000	0.000
6/30/2011	3.42	0.51	0.15		13.36	2.81	0.00	0.000	0.000
7/31/2011	3.20	0.96	0.30		13.46	2.84	0.00	0.000	0.000
8/31/2011	3.18	1.09	0.34		13.56	2.88	0.00	0.000	0.000
9/30/2011	2.99	0.62	0.21		13.64	2.90	0.00	0.000	0.000
10/31/2011	3.03	0.66	0.22		13.74	2.92	0.00	0.000	0.000
11/30/2011	3.12	0.65	0.21		13.83	2.94	0.00	0.000	0.000
12/31/2011	3.06	0.60	0.20		13.93	2.95	0.00	0.000	0.000
1/31/2012	3.05	0.93	0.30		14.02	2.98	0.00	0.000	0.000
2/29/2012	3.13	0.94	0.30		14.11	3.01	0.00	0.000	0.000
3/31/2012	3.05	0.66	0.22		14.21	3.03	0.00	0.000	0.000
4/30/2012	3.12	0.73	0.23		14.30	3.05	0.00	0.000	0.000
5/31/2012	2.97	0.71	0.24		14.39	3.07	0.00	0.000	0.000
6/30/2012	3.18	0.91	0.29		14.49	3.10	0.00	0.000	0.000
7/31/2012	3.08	0.98	0.32		14.58	3.13	0.00	0.000	0.000
8/31/2012	3.11	0.95	0.31		14.68	3.16	0.00	0.000	0.000
9/30/2012	2.56	0.52	0.20		14.76	3.18	0.00	0.000	0.000
10/31/2012	2.40	6.42	2.67		14.83	3.38	0.00	0.000	0.000
11/30/2012	7.24	10.58	1.46		15.05	3.69	0.00	0.000	0.000
12/31/2012	10.63	6.97	0.66		15.38	3.91	0.00	0.000	0.000
1/31/2013	11.44	6.13	0.54		15.73	4.10	0.00	0.000	0.000
2/28/2013	12.06	5.85	0.49		16.07	4.26	0.00	0.000	0.000
3/31/2013	8.89	5.80	0.65		16.35	4.44	0.00	0.000	0.000
4/30/2013	8.94	4.52	0.51		16.61	4.58	0.00	0.000	0.000
5/31/2013	7.79	3.26	0.42		16.86	4.68	0.00	0.000	0.000
6/30/2013	7.07	2.83	0.40		17.07	4.76	0.00	0.000	0.000
7/31/2013	6.56	2.85	0.43		17.27	4.85	0.00	0.000	0.000

Date	Oil Rate (CD) m3/d	Water Rate (CD) m3/d	Water Oil Ratio m3/m3	Water Inj Rate (CD) m3/d	Cum Oil Prod Km3	Cum Water Prod Km3	Cum Water Inj Km3	Voidage Replacement Ratio	Cum Voidage Replacemt Ratio
8/31/2013	7.03	2.85	0.41		17.49	4.94	0.00	0.000	0.000
9/30/2013	7.05	3.45	0.49		17.70	5.04	0.00	0.000	0.000
10/31/2013	6.63	3.48	0.53		17.91	5.15	0.00	0.000	0.000
11/30/2013	6.13	3.60	0.59		18.09	5.26	0.00	0.000	0.000
12/31/2013	5.78	3.50	0.61		18.27	5.37	0.00	0.000	0.000

Pattern: 03/08-14-008-29Inj Set: SinclairUnit#7

Oil Formation Vol Factor : 1.07100 m3/m3

Water Formation Vol Factor : 1.00150 m3/m3

Water / Oil Ratio : 0.40 m3/m3

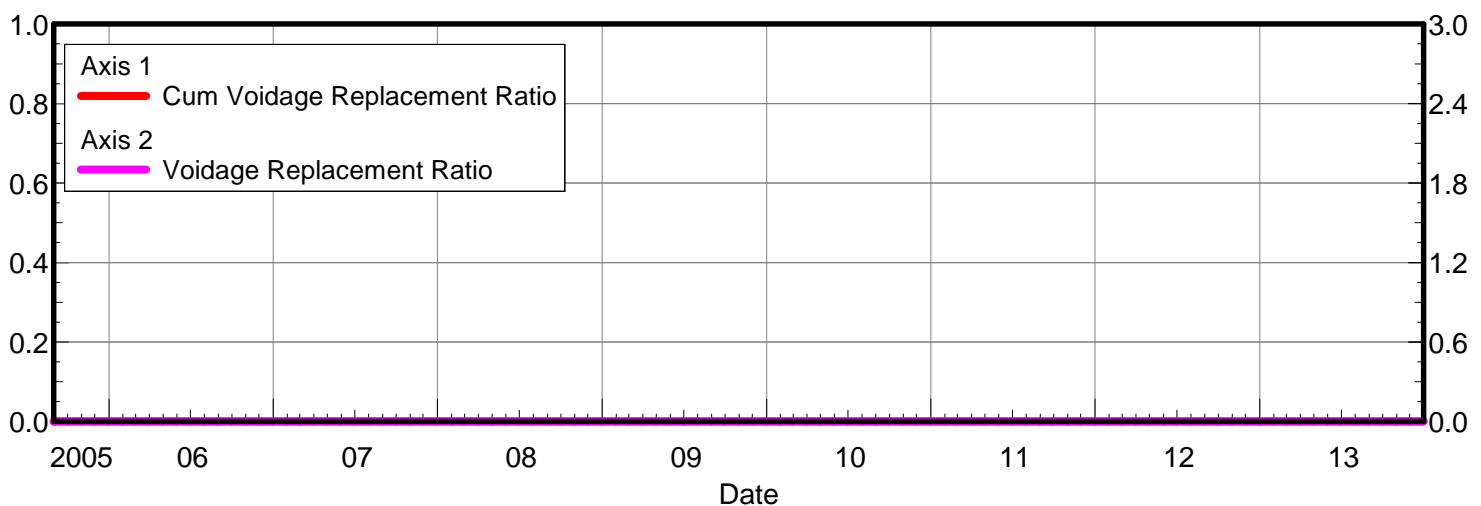
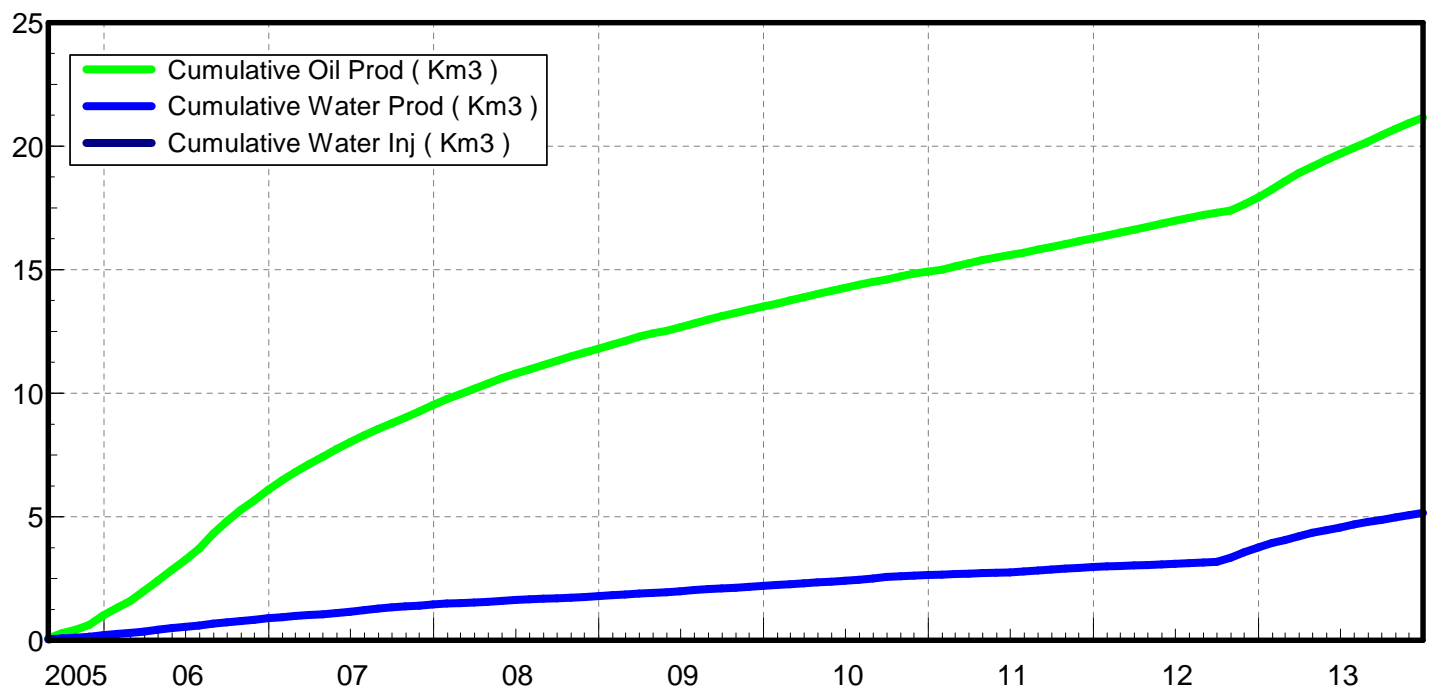
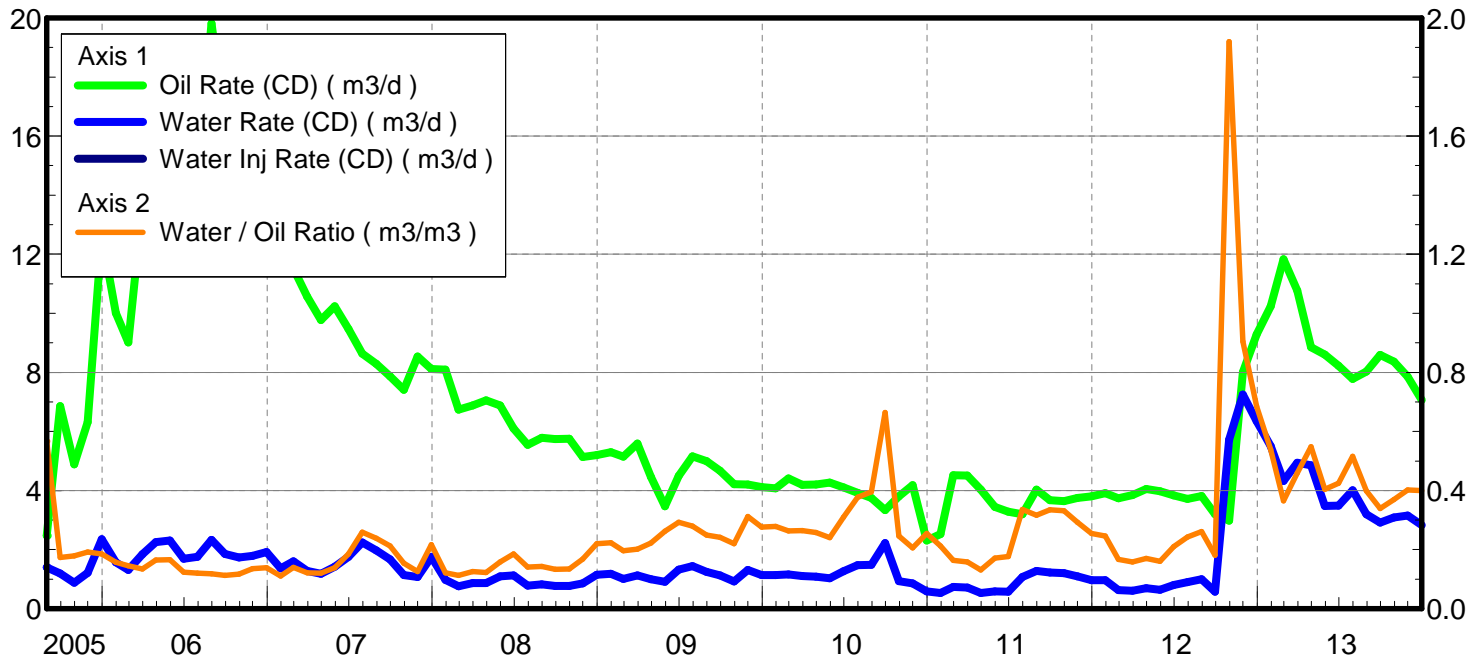
March 12, 2014

Operator: Tundra_O&G_Prtshp

Oil Rate (CD) : 7.06 m3/d

Water Rate (CD) : 2.83 m3/d

Water Inj Rate (CD) : * m3/d



Date	Oil Rate (CD) m3/d	Water Rate (CD) m3/d	Water Oil Ratio m3/m3	Water Inj Rate (CD) m3/d	Cum Oil Prod Km3	Cum Water Prod Km3	Cum Water Inj Km3	Voidage Replacement Ratio	Cum Voidage Replacemt Ratio
8/31/2005	2.47	1.40	0.57		0.08	0.04	0.00	0.000	0.000
9/30/2005	6.86	1.19	0.17		0.28	0.08	0.00	0.000	0.000
10/31/2005	4.89	0.88	0.18		0.43	0.11	0.00	0.000	0.000
11/30/2005	6.32	1.22	0.19		0.62	0.14	0.00	0.000	0.000
12/31/2005	12.65	2.35	0.19		1.02	0.22	0.00	0.000	0.000
1/31/2006	10.01	1.57	0.16		1.33	0.26	0.00	0.000	0.000
2/28/2006	9.01	1.31	0.15		1.58	0.30	0.00	0.000	0.000
3/31/2006	13.64	1.84	0.13		2.00	0.36	0.00	0.000	0.000
4/30/2006	13.64	2.25	0.17		2.41	0.43	0.00	0.000	0.000
5/31/2006	13.92	2.30	0.17		2.84	0.50	0.00	0.000	0.000
6/30/2006	13.61	1.69	0.12		3.25	0.55	0.00	0.000	0.000
7/31/2006	14.66	1.76	0.12		3.70	0.60	0.00	0.000	0.000
8/31/2006	19.81	2.33	0.12		4.32	0.67	0.00	0.000	0.000
9/30/2006	16.44	1.85	0.11		4.81	0.73	0.00	0.000	0.000
10/31/2006	14.76	1.73	0.12		5.27	0.78	0.00	0.000	0.000
11/30/2006	13.18	1.78	0.14		5.66	0.84	0.00	0.000	0.000
12/31/2006	13.85	1.92	0.14		6.09	0.90	0.00	0.000	0.000
1/31/2007	12.38	1.37	0.11		6.48	0.94	0.00	0.000	0.000
2/28/2007	11.52	1.61	0.14		6.80	0.98	0.00	0.000	0.000
3/31/2007	10.57	1.28	0.12		7.13	1.02	0.00	0.000	0.000
4/30/2007	9.77	1.18	0.12		7.42	1.06	0.00	0.000	0.000
5/31/2007	10.24	1.42	0.14		7.74	1.10	0.00	0.000	0.000
6/30/2007	9.46	1.75	0.19		8.02	1.16	0.00	0.000	0.000
7/31/2007	8.64	2.24	0.26		8.29	1.22	0.00	0.000	0.000
8/31/2007	8.28	1.97	0.24		8.55	1.29	0.00	0.000	0.000
9/30/2007	7.86	1.67	0.21		8.78	1.34	0.00	0.000	0.000
10/31/2007	7.42	1.14	0.15		9.01	1.37	0.00	0.000	0.000
11/30/2007	8.54	1.07	0.13		9.27	1.40	0.00	0.000	0.000
12/31/2007	8.12	1.76	0.22		9.52	1.46	0.00	0.000	0.000
1/31/2008	8.09	0.98	0.12		9.77	1.49	0.00	0.000	0.000
2/29/2008	6.74	0.76	0.11		9.97	1.51	0.00	0.000	0.000
3/31/2008	6.88	0.86	0.13		10.18	1.54	0.00	0.000	0.000
4/30/2008	7.05	0.86	0.12		10.39	1.56	0.00	0.000	0.000
5/31/2008	6.89	1.09	0.16		10.60	1.60	0.00	0.000	0.000
6/30/2008	6.10	1.13	0.19		10.79	1.63	0.00	0.000	0.000
7/31/2008	5.55	0.78	0.14		10.96	1.66	0.00	0.000	0.000
8/31/2008	5.78	0.83	0.14		11.14	1.68	0.00	0.000	0.000
9/30/2008	5.74	0.77	0.13		11.31	1.70	0.00	0.000	0.000
10/31/2008	5.76	0.77	0.13		11.49	1.73	0.00	0.000	0.000
11/30/2008	5.14	0.86	0.17		11.64	1.75	0.00	0.000	0.000
12/31/2008	5.20	1.15	0.22		11.81	1.79	0.00	0.000	0.000
1/31/2009	5.30	1.19	0.22		11.97	1.83	0.00	0.000	0.000
2/28/2009	5.15	1.01	0.20		12.11	1.85	0.00	0.000	0.000
3/31/2009	5.59	1.13	0.20		12.29	1.89	0.00	0.000	0.000
4/30/2009	4.47	0.99	0.22		12.42	1.92	0.00	0.000	0.000
5/31/2009	3.47	0.91	0.26		12.53	1.95	0.00	0.000	0.000
6/30/2009	4.50	1.32	0.29		12.66	1.99	0.00	0.000	0.000
7/31/2009	5.15	1.44	0.28		12.82	2.03	0.00	0.000	0.000

Date	Oil Rate (CD) m3/d	Water Rate (CD) m3/d	Water Oil Ratio m3/m3	Water Inj Rate (CD) m3/d	Cum Oil Prod Km3	Cum Water Prod Km3	Cum Water Inj Km3	Voidage Replacement Ratio	Cum Voidage Replacemt Ratio
8/31/2009	5.00	1.25	0.25		12.98	2.07	0.00	0.000	0.000
9/30/2009	4.67	1.13	0.24		13.12	2.10	0.00	0.000	0.000
10/31/2009	4.21	0.93	0.22		13.25	2.13	0.00	0.000	0.000
11/30/2009	4.20	1.31	0.31		13.38	2.17	0.00	0.000	0.000
12/31/2009	4.12	1.14	0.28		13.50	2.21	0.00	0.000	0.000
1/31/2010	4.08	1.14	0.28		13.63	2.24	0.00	0.000	0.000
2/28/2010	4.41	1.16	0.26		13.75	2.27	0.00	0.000	0.000
3/31/2010	4.20	1.11	0.26		13.88	2.31	0.00	0.000	0.000
4/30/2010	4.20	1.08	0.26		14.01	2.34	0.00	0.000	0.000
5/31/2010	4.27	1.03	0.24		14.14	2.37	0.00	0.000	0.000
6/30/2010	4.11	1.27	0.31		14.26	2.41	0.00	0.000	0.000
7/31/2010	3.92	1.48	0.38		14.39	2.46	0.00	0.000	0.000
8/31/2010	3.75	1.48	0.40		14.50	2.50	0.00	0.000	0.000
9/30/2010	3.34	2.22	0.66		14.60	2.57	0.00	0.000	0.000
10/31/2010	3.81	0.94	0.25		14.72	2.60	0.00	0.000	0.000
11/30/2010	4.19	0.86	0.21		14.85	2.62	0.00	0.000	0.000
12/31/2010	2.30	0.59	0.25		14.92	2.64	0.00	0.000	0.000
1/31/2011	2.53	0.54	0.21		15.00	2.66	0.00	0.000	0.000
2/28/2011	4.52	0.74	0.16		15.12	2.68	0.00	0.000	0.000
3/31/2011	4.50	0.71	0.16		15.26	2.70	0.00	0.000	0.000
4/30/2011	4.03	0.53	0.13		15.38	2.72	0.00	0.000	0.000
5/31/2011	3.45	0.59	0.17		15.49	2.74	0.00	0.000	0.000
6/30/2011	3.29	0.58	0.18		15.59	2.75	0.00	0.000	0.000
7/31/2011	3.20	1.07	0.34		15.69	2.79	0.00	0.000	0.000
8/31/2011	4.03	1.28	0.32		15.81	2.83	0.00	0.000	0.000
9/30/2011	3.67	1.23	0.33		15.92	2.86	0.00	0.000	0.000
10/31/2011	3.65	1.21	0.33		16.04	2.90	0.00	0.000	0.000
11/30/2011	3.75	1.10	0.29		16.15	2.93	0.00	0.000	0.000
12/31/2011	3.80	0.97	0.25		16.27	2.96	0.00	0.000	0.000
1/31/2012	3.91	0.96	0.25		16.39	2.99	0.00	0.000	0.000
2/29/2012	3.74	0.63	0.17		16.50	3.01	0.00	0.000	0.000
3/31/2012	3.85	0.61	0.16		16.62	3.03	0.00	0.000	0.000
4/30/2012	4.05	0.69	0.17		16.74	3.05	0.00	0.000	0.000
5/31/2012	3.97	0.64	0.16		16.86	3.07	0.00	0.000	0.000
6/30/2012	3.84	0.81	0.21		16.97	3.10	0.00	0.000	0.000
7/31/2012	3.72	0.90	0.24		17.09	3.12	0.00	0.000	0.000
8/31/2012	3.82	1.00	0.26		17.21	3.15	0.00	0.000	0.000
9/30/2012	3.20	0.58	0.18		17.30	3.17	0.00	0.000	0.000
10/31/2012	2.98	5.72	1.92		17.40	3.35	0.00	0.000	0.000
11/30/2012	8.01	7.24	0.90		17.64	3.57	0.00	0.000	0.000
12/31/2012	9.28	6.35	0.68		17.92	3.76	0.00	0.000	0.000
1/31/2013	10.24	5.51	0.54		18.24	3.93	0.00	0.000	0.000
2/28/2013	11.83	4.32	0.37		18.57	4.06	0.00	0.000	0.000
3/31/2013	10.77	4.94	0.46		18.91	4.21	0.00	0.000	0.000
4/30/2013	8.85	4.85	0.55		19.17	4.35	0.00	0.000	0.000
5/31/2013	8.60	3.47	0.40		19.44	4.46	0.00	0.000	0.000
6/30/2013	8.22	3.49	0.42		19.69	4.57	0.00	0.000	0.000
7/31/2013	7.77	4.01	0.52		19.93	4.69	0.00	0.000	0.000

Date	Oil Rate (CD) m3/d	Water Rate (CD) m3/d	Water Oil Ratio m3/m3	Water Inj Rate (CD) m3/d	Cum Oil Prod Km3	Cum Water Prod Km3	Cum Water Inj Km3	Voidage Replacement Ratio	Cum Voidage Replacemt Ratio
8/31/2013	8.03	3.20	0.40		20.18	4.79	0.00	0.000	0.000
9/30/2013	8.60	2.92	0.34		20.43	4.88	0.00	0.000	0.000
10/31/2013	8.36	3.09	0.37		20.69	4.97	0.00	0.000	0.000
11/30/2013	7.86	3.15	0.40		20.93	5.07	0.00	0.000	0.000
12/31/2013	7.06	2.83	0.40		21.15	5.16	0.00	0.000	0.000

Oil Formation Vol Factor : 1.07100 m3/m3

Water Formation Vol Factor : 1.00150 m3/m3

Water / Oil Ratio : 0.58 m3/m3

Pattern: 02/09-14-008-29Inj Set: SinclairUnit#7

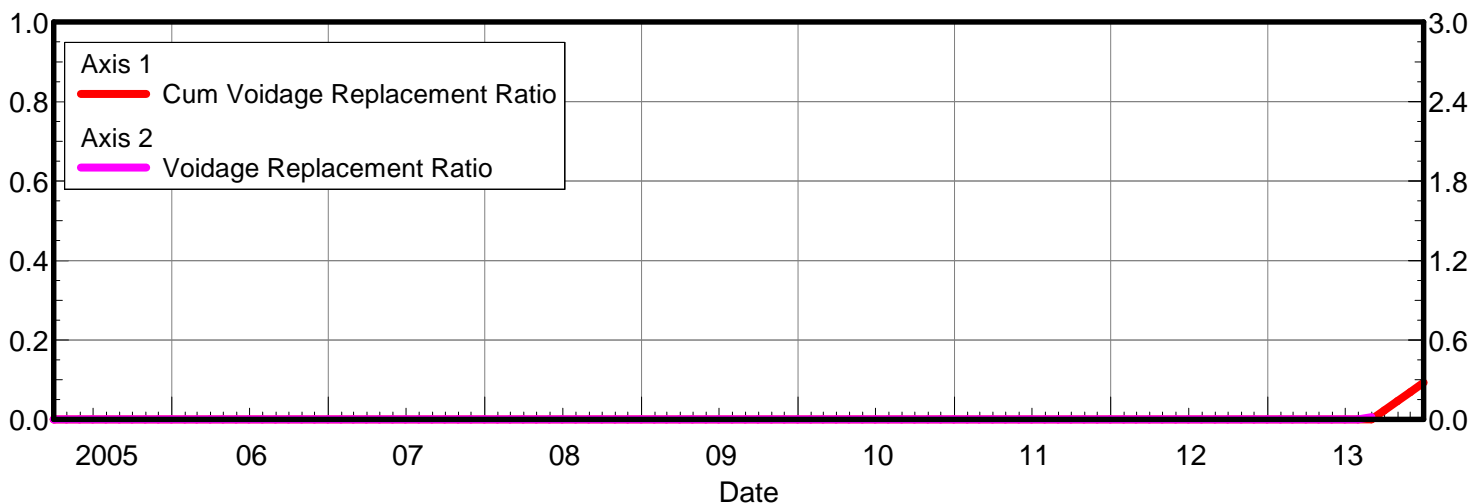
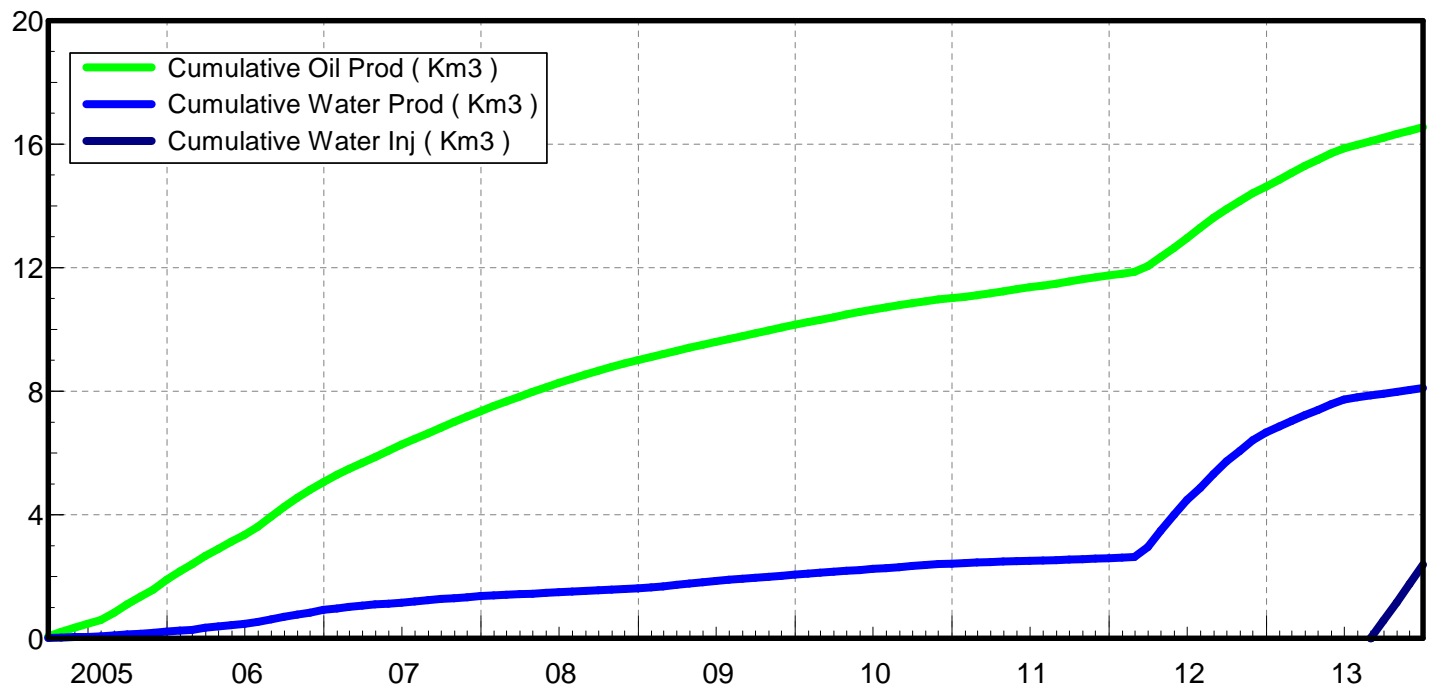
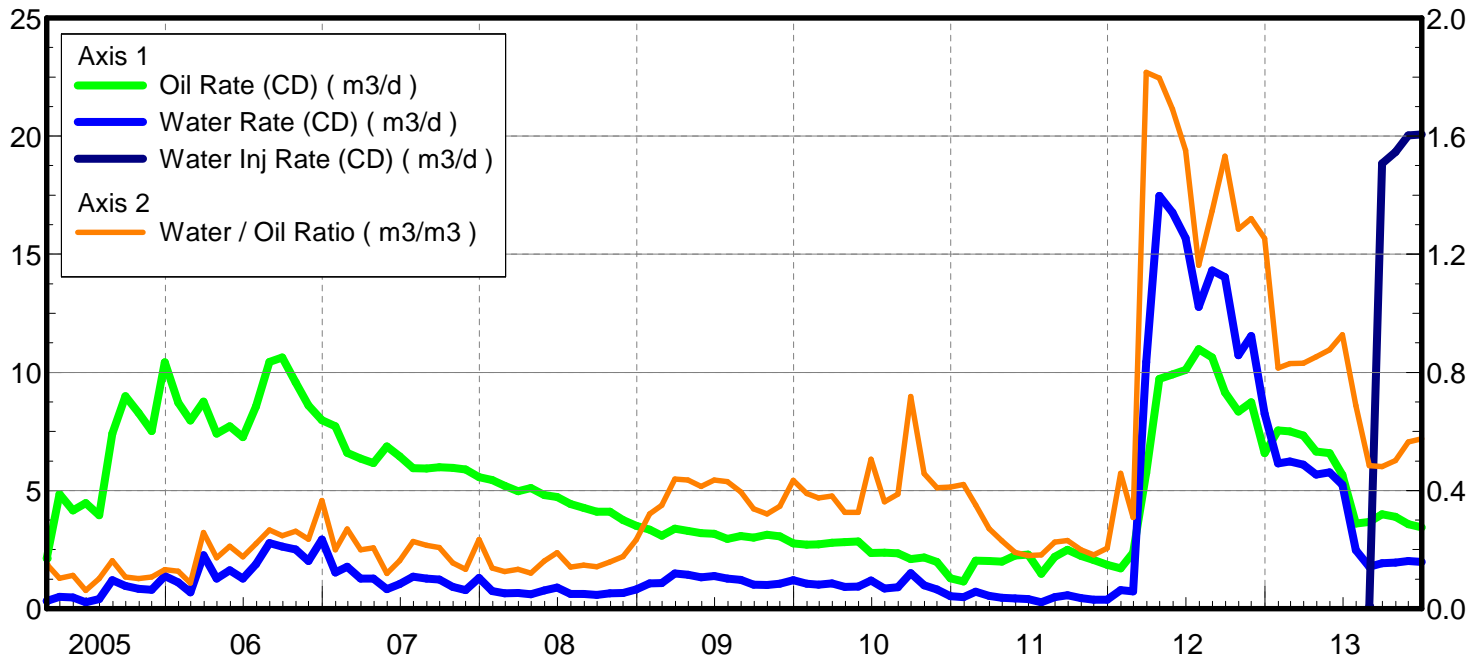
March 12, 2014

Operator: Tundra_O&G_Prtshp

Oil Rate (CD) : 3.44 m3/d

Water Rate (CD) : 1.98 m3/d

Water Inj Rate (CD) : 20.06 m3/d



Date	Oil Rate (CD) m3/d	Water Rate (CD) m3/d	Water Oil Ratio m3/m3	Water Inj Rate (CD) m3/d	Cum Oil Prod Km3	Cum Water Prod Km3	Cum Water Inj Km3	Voidage Replacement Ratio	Cum Voidage Replacemt Ratio
3/31/2005	2.13	0.32	0.15		0.07	0.01	0.00	0.000	0.000
4/30/2005	4.84	0.50	0.10		0.21	0.02	0.00	0.000	0.000
5/31/2005	4.16	0.47	0.11		0.34	0.04	0.00	0.000	0.000
6/30/2005	4.47	0.28	0.06		0.47	0.05	0.00	0.000	0.000
7/31/2005	3.96	0.40	0.10		0.60	0.06	0.00	0.000	0.000
8/31/2005	7.41	1.21	0.16		0.83	0.10	0.00	0.000	0.000
9/30/2005	8.99	0.96	0.11		1.10	0.13	0.00	0.000	0.000
10/31/2005	8.29	0.84	0.10		1.35	0.15	0.00	0.000	0.000
11/30/2005	7.52	0.80	0.11		1.58	0.18	0.00	0.000	0.000
12/31/2005	10.43	1.38	0.13		1.90	0.22	0.00	0.000	0.000
1/31/2006	8.72	1.11	0.13		2.17	0.25	0.00	0.000	0.000
2/28/2006	7.96	0.69	0.09		2.40	0.27	0.00	0.000	0.000
3/31/2006	8.76	2.26	0.26		2.67	0.34	0.00	0.000	0.000
4/30/2006	7.41	1.27	0.17		2.89	0.38	0.00	0.000	0.000
5/31/2006	7.72	1.63	0.21		3.13	0.43	0.00	0.000	0.000
6/30/2006	7.26	1.28	0.18		3.35	0.47	0.00	0.000	0.000
7/31/2006	8.56	1.88	0.22		3.61	0.53	0.00	0.000	0.000
8/31/2006	10.45	2.78	0.27		3.94	0.61	0.00	0.000	0.000
9/30/2006	10.63	2.63	0.25		4.25	0.69	0.00	0.000	0.000
10/31/2006	9.57	2.51	0.26		4.55	0.77	0.00	0.000	0.000
11/30/2006	8.60	2.02	0.24		4.81	0.83	0.00	0.000	0.000
12/31/2006	7.97	2.92	0.37		5.06	0.92	0.00	0.000	0.000
1/31/2007	7.71	1.54	0.20		5.30	0.97	0.00	0.000	0.000
2/28/2007	6.59	1.78	0.27		5.48	1.02	0.00	0.000	0.000
3/31/2007	6.35	1.27	0.20		5.68	1.06	0.00	0.000	0.000
4/30/2007	6.16	1.27	0.21		5.86	1.10	0.00	0.000	0.000
5/31/2007	6.87	0.82	0.12		6.08	1.12	0.00	0.000	0.000
6/30/2007	6.45	1.05	0.16		6.27	1.15	0.00	0.000	0.000
7/31/2007	5.95	1.36	0.23		6.45	1.20	0.00	0.000	0.000
8/31/2007	5.93	1.27	0.21		6.64	1.24	0.00	0.000	0.000
9/30/2007	5.98	1.24	0.21		6.82	1.27	0.00	0.000	0.000
10/31/2007	5.96	0.93	0.16		7.00	1.30	0.00	0.000	0.000
11/30/2007	5.90	0.79	0.13		7.18	1.33	0.00	0.000	0.000
12/31/2007	5.57	1.30	0.23		7.35	1.37	0.00	0.000	0.000
1/31/2008	5.45	0.75	0.14		7.52	1.39	0.00	0.000	0.000
2/29/2008	5.21	0.66	0.13		7.67	1.41	0.00	0.000	0.000
3/31/2008	4.97	0.66	0.13		7.82	1.43	0.00	0.000	0.000
4/30/2008	5.11	0.61	0.12		7.98	1.45	0.00	0.000	0.000
5/31/2008	4.81	0.77	0.16		8.13	1.47	0.00	0.000	0.000
6/30/2008	4.73	0.90	0.19		8.27	1.50	0.00	0.000	0.000
7/31/2008	4.43	0.62	0.14		8.41	1.52	0.00	0.000	0.000
8/31/2008	4.27	0.63	0.15		8.54	1.54	0.00	0.000	0.000
9/30/2008	4.11	0.58	0.14		8.66	1.55	0.00	0.000	0.000
10/31/2008	4.11	0.65	0.16		8.79	1.57	0.00	0.000	0.000
11/30/2008	3.75	0.66	0.18		8.90	1.59	0.00	0.000	0.000
12/31/2008	3.51	0.82	0.23		9.01	1.62	0.00	0.000	0.000
1/31/2009	3.35	1.07	0.32		9.11	1.65	0.00	0.000	0.000
2/28/2009	3.09	1.08	0.35		9.20	1.68	0.00	0.000	0.000

Date	Oil Rate (CD) m3/d	Water Rate (CD) m3/d	Water Oil Ratio m3/m3	Water Inj Rate (CD) m3/d	Cum Oil Prod Km3	Cum Water Prod Km3	Cum Water Inj Km3	Voidage Replacement Ratio	Cum Voidage Replacemt Ratio
3/31/2009	3.39	1.49	0.44		9.31	1.73	0.00	0.000	0.000
4/30/2009	3.29	1.43	0.44		9.40	1.77	0.00	0.000	0.000
5/31/2009	3.20	1.33	0.41		9.50	1.81	0.00	0.000	0.000
6/30/2009	3.18	1.39	0.44		9.60	1.86	0.00	0.000	0.000
7/31/2009	2.95	1.27	0.43		9.69	1.89	0.00	0.000	0.000
8/31/2009	3.08	1.22	0.40		9.79	1.93	0.00	0.000	0.000
9/30/2009	3.01	1.02	0.34		9.88	1.96	0.00	0.000	0.000
10/31/2009	3.12	1.00	0.32		9.97	1.99	0.00	0.000	0.000
11/30/2009	3.06	1.06	0.35		10.06	2.03	0.00	0.000	0.000
12/31/2009	2.77	1.20	0.43		10.15	2.06	0.00	0.000	0.000
1/31/2010	2.70	1.05	0.39		10.23	2.10	0.00	0.000	0.000
2/28/2010	2.73	1.02	0.37		10.31	2.12	0.00	0.000	0.000
3/31/2010	2.79	1.06	0.38		10.40	2.16	0.00	0.000	0.000
4/30/2010	2.81	0.92	0.33		10.48	2.18	0.00	0.000	0.000
5/31/2010	2.85	0.93	0.33		10.57	2.21	0.00	0.000	0.000
6/30/2010	2.36	1.20	0.51		10.64	2.25	0.00	0.000	0.000
7/31/2010	2.37	0.86	0.36		10.71	2.28	0.00	0.000	0.000
8/31/2010	2.34	0.91	0.39		10.79	2.30	0.00	0.000	0.000
9/30/2010	2.10	1.51	0.72		10.85	2.35	0.00	0.000	0.000
10/31/2010	2.16	0.99	0.46		10.92	2.38	0.00	0.000	0.000
11/30/2010	1.97	0.81	0.41		10.98	2.40	0.00	0.000	0.000
12/31/2010	1.29	0.53	0.41		11.02	2.42	0.00	0.000	0.000
1/31/2011	1.15	0.48	0.42		11.05	2.44	0.00	0.000	0.000
2/28/2011	2.03	0.71	0.35		11.11	2.46	0.00	0.000	0.000
3/31/2011	2.02	0.55	0.27		11.17	2.47	0.00	0.000	0.000
4/30/2011	1.99	0.46	0.23		11.23	2.49	0.00	0.000	0.000
5/31/2011	2.25	0.43	0.19		11.30	2.50	0.00	0.000	0.000
6/30/2011	2.29	0.41	0.18		11.37	2.51	0.00	0.000	0.000
7/31/2011	1.48	0.27	0.18		11.41	2.52	0.00	0.000	0.000
8/31/2011	2.20	0.50	0.23		11.48	2.54	0.00	0.000	0.000
9/30/2011	2.49	0.57	0.23		11.56	2.55	0.00	0.000	0.000
10/31/2011	2.23	0.45	0.20		11.63	2.57	0.00	0.000	0.000
11/30/2011	2.06	0.38	0.18		11.69	2.58	0.00	0.000	0.000
12/31/2011	1.86	0.38	0.20		11.75	2.59	0.00	0.000	0.000
1/31/2012	1.71	0.79	0.46		11.80	2.61	0.00	0.000	0.000
2/29/2012	2.37	0.73	0.31		11.87	2.64	0.00	0.000	0.000
3/31/2012	5.75	10.44	1.82		12.05	2.96	0.00	0.000	0.000
4/30/2012	9.72	17.47	1.80		12.34	3.48	0.00	0.000	0.000
5/31/2012	9.91	16.76	1.69		12.65	4.00	0.00	0.000	0.000
6/30/2012	10.11	15.68	1.55		12.95	4.47	0.00	0.000	0.000
7/31/2012	10.99	12.77	1.16		13.29	4.87	0.00	0.000	0.000
8/31/2012	10.63	14.32	1.35		13.62	5.31	0.00	0.000	0.000
9/30/2012	9.16	14.03	1.53		13.89	5.73	0.00	0.000	0.000
10/31/2012	8.35	10.73	1.29		14.15	6.07	0.00	0.000	0.000
11/30/2012	8.73	11.54	1.32		14.41	6.41	0.00	0.000	0.000
12/31/2012	6.58	8.24	1.25		14.62	6.67	0.00	0.000	0.000
1/31/2013	7.55	6.15	0.81		14.85	6.86	0.00	0.000	0.000
2/28/2013	7.51	6.23	0.83		15.06	7.03	0.00	0.000	0.000

Date	Oil Rate (CD) m3/d	Water Rate (CD) m3/d	Water Oil Ratio m3/m3	Water Inj Rate (CD) m3/d	Cum Oil Prod Km3	Cum Water Prod Km3	Cum Water Inj Km3	Voidage Replacement Ratio	Cum Voidage Replacemt Ratio
3/31/2013	7.33	6.09	0.83		15.29	7.22	0.00	0.000	0.000
4/30/2013	6.66	5.68	0.85		15.49	7.39	0.00	0.000	0.000
5/31/2013	6.58	5.77	0.88		15.69	7.57	0.00	0.000	0.000
6/30/2013	5.66	5.25	0.93		15.86	7.73	0.00	0.000	0.000
7/31/2013	3.60	2.48	0.69		15.97	7.81	0.00	0.000	0.000
8/31/2013	3.67	1.77	0.48	0.10	16.09	7.86	0.00	0.017	0.000
9/30/2013	4.00	1.92	0.48	18.83	16.21	7.92	0.57	3.040	0.022
10/31/2013	3.89	1.95	0.50	19.32	16.33	7.98	1.17	3.160	0.046
11/30/2013	3.58	2.02	0.56	20.03	16.44	8.04	1.77	3.428	0.069
12/31/2013	3.44	1.98	0.58	20.06	16.54	8.10	2.39	3.548	0.093

Pattern: 02/16-14-008-29Inj Set: SinclairUnit#7

Oil Formation Vol Factor : 1.07100 m3/m3

Water Formation Vol Factor : 1.00150 m3/m3

Water / Oil Ratio : 0.49 m3/m3

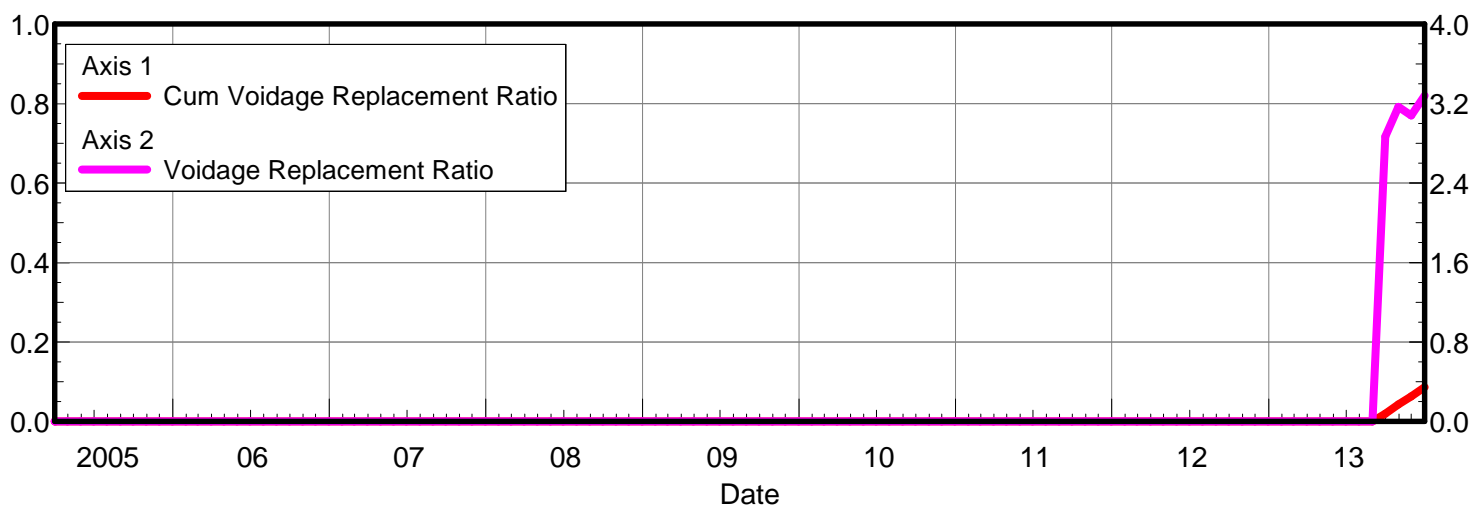
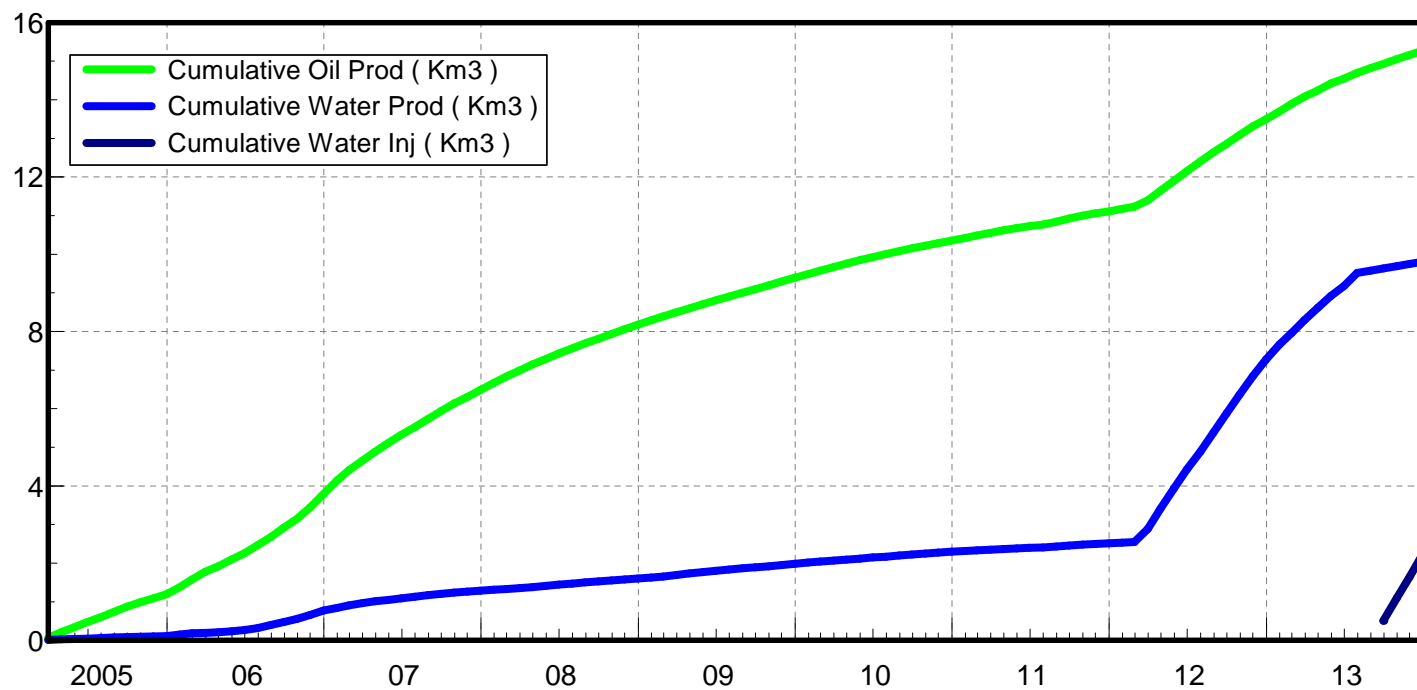
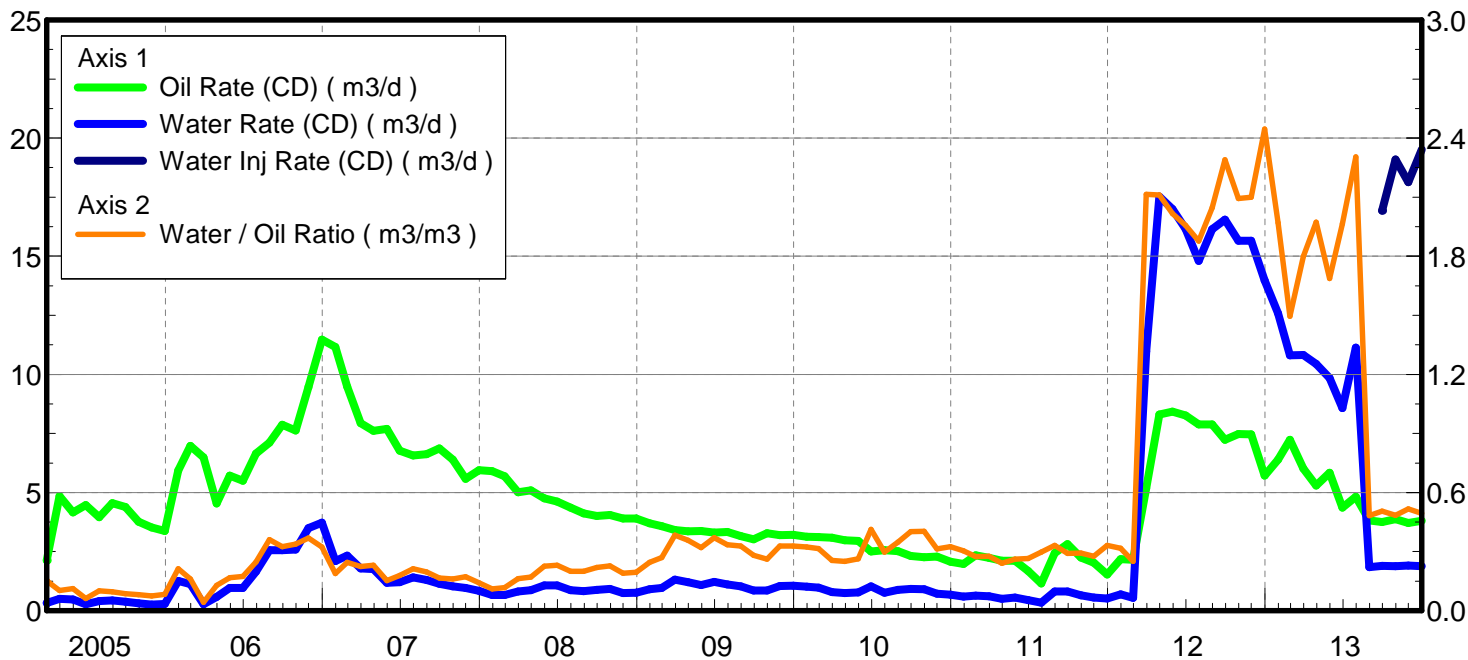
March 12, 2014

Operator: Tundra_O&G_Prtshp

Oil Rate (CD) : 3.80 m3/d

Water Rate (CD) : 1.88 m3/d

Water Inj Rate (CD) : 19.52 m3/d



Date	Oil Rate (CD) m3/d	Water Rate (CD) m3/d	Water Oil Ratio m3/m3	Water Inj Rate (CD) m3/d	Cum Oil Prod Km3	Cum Water Prod Km3	Cum Water Inj Km3	Voidage Replacement Ratio	Cum Voidage Replacemt Ratio
3/31/2005	2.13	0.32	0.15		0.07	0.01	0.00	0.000	0.000
4/30/2005	4.84	0.50	0.10		0.21	0.02	0.00	0.000	0.000
5/31/2005	4.16	0.47	0.11		0.34	0.04	0.00	0.000	0.000
6/30/2005	4.47	0.28	0.06		0.47	0.05	0.00	0.000	0.000
7/31/2005	3.96	0.40	0.10		0.60	0.06	0.00	0.000	0.000
8/31/2005	4.55	0.44	0.10		0.74	0.07	0.00	0.000	0.000
9/30/2005	4.39	0.38	0.09		0.87	0.09	0.00	0.000	0.000
10/31/2005	3.77	0.31	0.08		0.99	0.09	0.00	0.000	0.000
11/30/2005	3.52	0.26	0.07		1.09	0.10	0.00	0.000	0.000
12/31/2005	3.37	0.28	0.08		1.20	0.11	0.00	0.000	0.000
1/31/2006	5.94	1.26	0.21		1.38	0.15	0.00	0.000	0.000
2/28/2006	6.97	1.12	0.16		1.58	0.18	0.00	0.000	0.000
3/31/2006	6.48	0.28	0.04		1.78	0.19	0.00	0.000	0.000
4/30/2006	4.54	0.58	0.13		1.91	0.21	0.00	0.000	0.000
5/31/2006	5.71	0.96	0.17		2.09	0.24	0.00	0.000	0.000
6/30/2006	5.50	0.96	0.17		2.25	0.27	0.00	0.000	0.000
7/31/2006	6.65	1.65	0.25		2.46	0.32	0.00	0.000	0.000
8/31/2006	7.11	2.56	0.36		2.68	0.40	0.00	0.000	0.000
9/30/2006	7.86	2.56	0.32		2.92	0.47	0.00	0.000	0.000
10/31/2006	7.63	2.58	0.34		3.15	0.55	0.00	0.000	0.000
11/30/2006	9.47	3.50	0.37		3.44	0.66	0.00	0.000	0.000
12/31/2006	11.47	3.72	0.32		3.79	0.77	0.00	0.000	0.000
1/31/2007	11.16	2.10	0.19		4.14	0.84	0.00	0.000	0.000
2/28/2007	9.48	2.33	0.25		4.41	0.90	0.00	0.000	0.000
3/31/2007	7.94	1.78	0.22		4.65	0.96	0.00	0.000	0.000
4/30/2007	7.62	1.76	0.23		4.88	1.01	0.00	0.000	0.000
5/31/2007	7.69	1.18	0.15		5.12	1.05	0.00	0.000	0.000
6/30/2007	6.77	1.21	0.18		5.32	1.09	0.00	0.000	0.000
7/31/2007	6.57	1.40	0.21		5.52	1.13	0.00	0.000	0.000
8/31/2007	6.63	1.30	0.20		5.73	1.17	0.00	0.000	0.000
9/30/2007	6.86	1.13	0.17		5.94	1.20	0.00	0.000	0.000
10/31/2007	6.39	1.03	0.16		6.13	1.23	0.00	0.000	0.000
11/30/2007	5.59	0.96	0.17		6.30	1.26	0.00	0.000	0.000
12/31/2007	5.94	0.85	0.14		6.49	1.29	0.00	0.000	0.000
1/31/2008	5.90	0.66	0.11		6.67	1.31	0.00	0.000	0.000
2/29/2008	5.69	0.67	0.12		6.83	1.33	0.00	0.000	0.000
3/31/2008	5.01	0.81	0.16		6.99	1.35	0.00	0.000	0.000
4/30/2008	5.09	0.87	0.17		7.14	1.38	0.00	0.000	0.000
5/31/2008	4.75	1.07	0.23		7.29	1.41	0.00	0.000	0.000
6/30/2008	4.62	1.07	0.23		7.43	1.45	0.00	0.000	0.000
7/31/2008	4.36	0.87	0.20		7.56	1.47	0.00	0.000	0.000
8/31/2008	4.11	0.83	0.20		7.69	1.50	0.00	0.000	0.000
9/30/2008	4.01	0.88	0.22		7.81	1.53	0.00	0.000	0.000
10/31/2008	4.05	0.92	0.23		7.94	1.55	0.00	0.000	0.000
11/30/2008	3.90	0.74	0.19		8.05	1.58	0.00	0.000	0.000
12/31/2008	3.91	0.76	0.19		8.18	1.60	0.00	0.000	0.000
1/31/2009	3.70	0.91	0.25		8.29	1.63	0.00	0.000	0.000
2/28/2009	3.58	0.96	0.27		8.39	1.65	0.00	0.000	0.000

Date	Oil Rate (CD) m3/d	Water Rate (CD) m3/d	Water Oil Ratio m3/m3	Water Inj Rate (CD) m3/d	Cum Oil Prod Km3	Cum Water Prod Km3	Cum Water Inj Km3	Voidage Replacement Ratio	Cum Voidage Replacemt Ratio
3/31/2009	3.42	1.31	0.38		8.50	1.70	0.00	0.000	0.000
4/30/2009	3.35	1.20	0.36		8.60	1.73	0.00	0.000	0.000
5/31/2009	3.37	1.08	0.32		8.70	1.76	0.00	0.000	0.000
6/30/2009	3.31	1.22	0.37		8.80	1.80	0.00	0.000	0.000
7/31/2009	3.33	1.11	0.33		8.90	1.84	0.00	0.000	0.000
8/31/2009	3.15	1.04	0.33		9.00	1.87	0.00	0.000	0.000
9/30/2009	3.02	0.85	0.28		9.09	1.89	0.00	0.000	0.000
10/31/2009	3.28	0.86	0.26		9.19	1.92	0.00	0.000	0.000
11/30/2009	3.19	1.05	0.33		9.29	1.95	0.00	0.000	0.000
12/31/2009	3.20	1.05	0.33		9.39	1.98	0.00	0.000	0.000
1/31/2010	3.13	1.01	0.32		9.49	2.02	0.00	0.000	0.000
2/28/2010	3.11	0.98	0.31		9.57	2.04	0.00	0.000	0.000
3/31/2010	3.09	0.79	0.25		9.67	2.07	0.00	0.000	0.000
4/30/2010	2.98	0.75	0.25		9.76	2.09	0.00	0.000	0.000
5/31/2010	2.95	0.78	0.26		9.85	2.11	0.00	0.000	0.000
6/30/2010	2.50	1.03	0.41		9.92	2.15	0.00	0.000	0.000
7/31/2010	2.56	0.76	0.30		10.00	2.17	0.00	0.000	0.000
8/31/2010	2.52	0.88	0.35		10.08	2.20	0.00	0.000	0.000
9/30/2010	2.32	0.93	0.40		10.15	2.22	0.00	0.000	0.000
10/31/2010	2.27	0.91	0.40		10.22	2.25	0.00	0.000	0.000
11/30/2010	2.29	0.72	0.31		10.29	2.27	0.00	0.000	0.000
12/31/2010	2.08	0.68	0.33		10.36	2.29	0.00	0.000	0.000
1/31/2011	1.97	0.60	0.30		10.42	2.31	0.00	0.000	0.000
2/28/2011	2.34	0.64	0.27		10.48	2.33	0.00	0.000	0.000
3/31/2011	2.23	0.62	0.28		10.55	2.35	0.00	0.000	0.000
4/30/2011	2.11	0.51	0.24		10.61	2.37	0.00	0.000	0.000
5/31/2011	2.11	0.55	0.26		10.68	2.38	0.00	0.000	0.000
6/30/2011	1.68	0.44	0.26		10.73	2.40	0.00	0.000	0.000
7/31/2011	1.16	0.35	0.30		10.77	2.41	0.00	0.000	0.000
8/31/2011	2.44	0.81	0.33		10.84	2.43	0.00	0.000	0.000
9/30/2011	2.81	0.82	0.29		10.93	2.46	0.00	0.000	0.000
10/31/2011	2.25	0.66	0.29		11.00	2.48	0.00	0.000	0.000
11/30/2011	2.03	0.56	0.28		11.06	2.49	0.00	0.000	0.000
12/31/2011	1.53	0.51	0.33		11.10	2.51	0.00	0.000	0.000
1/31/2012	2.19	0.69	0.32		11.17	2.53	0.00	0.000	0.000
2/29/2012	2.15	0.54	0.25		11.23	2.55	0.00	0.000	0.000
3/31/2012	5.19	10.98	2.11		11.39	2.89	0.00	0.000	0.000
4/30/2012	8.30	17.53	2.11		11.64	3.41	0.00	0.000	0.000
5/31/2012	8.43	16.99	2.02		11.91	3.94	0.00	0.000	0.000
6/30/2012	8.26	16.16	1.96		12.15	4.42	0.00	0.000	0.000
7/31/2012	7.89	14.81	1.88		12.40	4.88	0.00	0.000	0.000
8/31/2012	7.89	16.14	2.05		12.64	5.38	0.00	0.000	0.000
9/30/2012	7.23	16.55	2.29		12.86	5.88	0.00	0.000	0.000
10/31/2012	7.48	15.66	2.09		13.09	6.37	0.00	0.000	0.000
11/30/2012	7.46	15.66	2.10		13.31	6.84	0.00	0.000	0.000
12/31/2012	5.71	13.98	2.45		13.49	7.27	0.00	0.000	0.000
1/31/2013	6.39	12.58	1.97		13.69	7.66	0.00	0.000	0.000
2/28/2013	7.23	10.80	1.49		13.89	7.96	0.00	0.000	0.000

Date	Oil Rate (CD) m3/d	Water Rate (CD) m3/d	Water Oil Ratio m3/m3	Water Inj Rate (CD) m3/d	Cum Oil Prod Km3	Cum Water Prod Km3	Cum Water Inj Km3	Voidage Replacement Ratio	Cum Voidage Replacemt Ratio
3/31/2013	6.01	10.82	1.80		14.08	8.30	0.00	0.000	0.000
4/30/2013	5.29	10.45	1.97		14.24	8.61	0.00	0.000	0.000
5/31/2013	5.84	9.85	1.69		14.42	8.92	0.00	0.000	0.000
6/30/2013	4.37	8.58	1.96		14.55	9.17	0.00	0.000	0.000
7/31/2013	4.83	11.13	2.30		14.70	9.52	0.00	0.000	0.000
8/31/2013	3.82	1.84	0.48		14.82	9.57	0.00	0.000	0.000
9/30/2013	3.75	1.90	0.51	16.93	14.93	9.63	0.51	2.867	0.020
10/31/2013	3.88	1.88	0.48	19.10	15.05	9.69	1.10	3.168	0.043
11/30/2013	3.71	1.92	0.52	18.13	15.16	9.75	1.64	3.080	0.063
12/31/2013	3.80	1.88	0.49	19.52	15.28	9.81	2.25	3.281	0.086

Pattern: 02/05-15-008-29Inj Set: SinclairUnit#7

Oil Formation Vol Factor : 1.07100 m³/m³

Water Formation Vol Factor : 1.00150 m³/m³

Water / Oil Ratio : 0.58 m³/m³

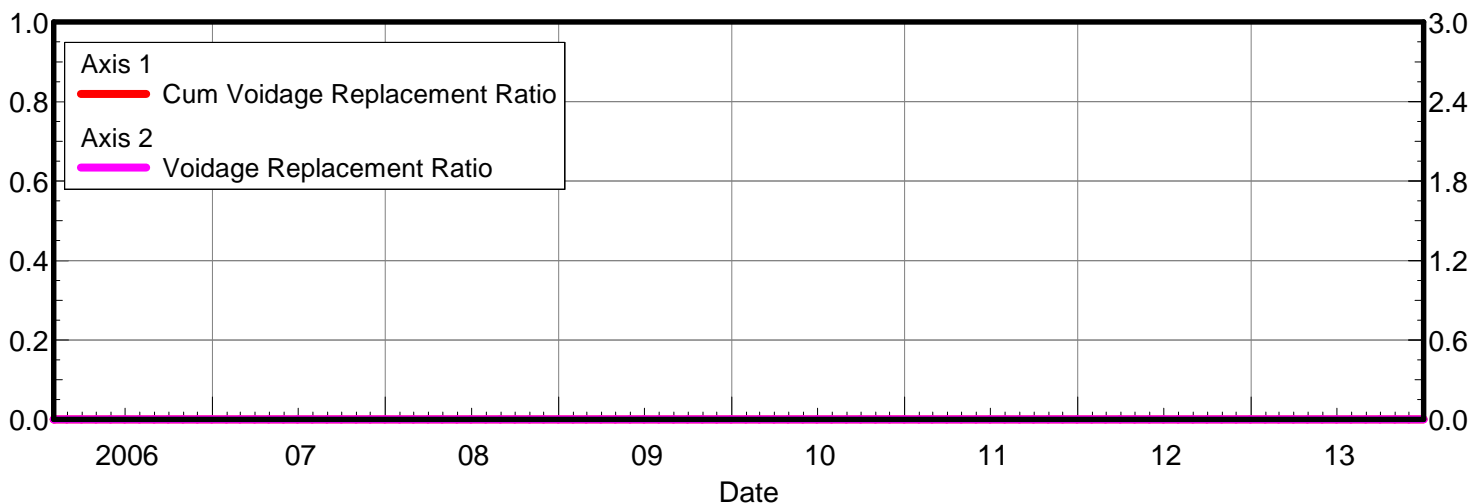
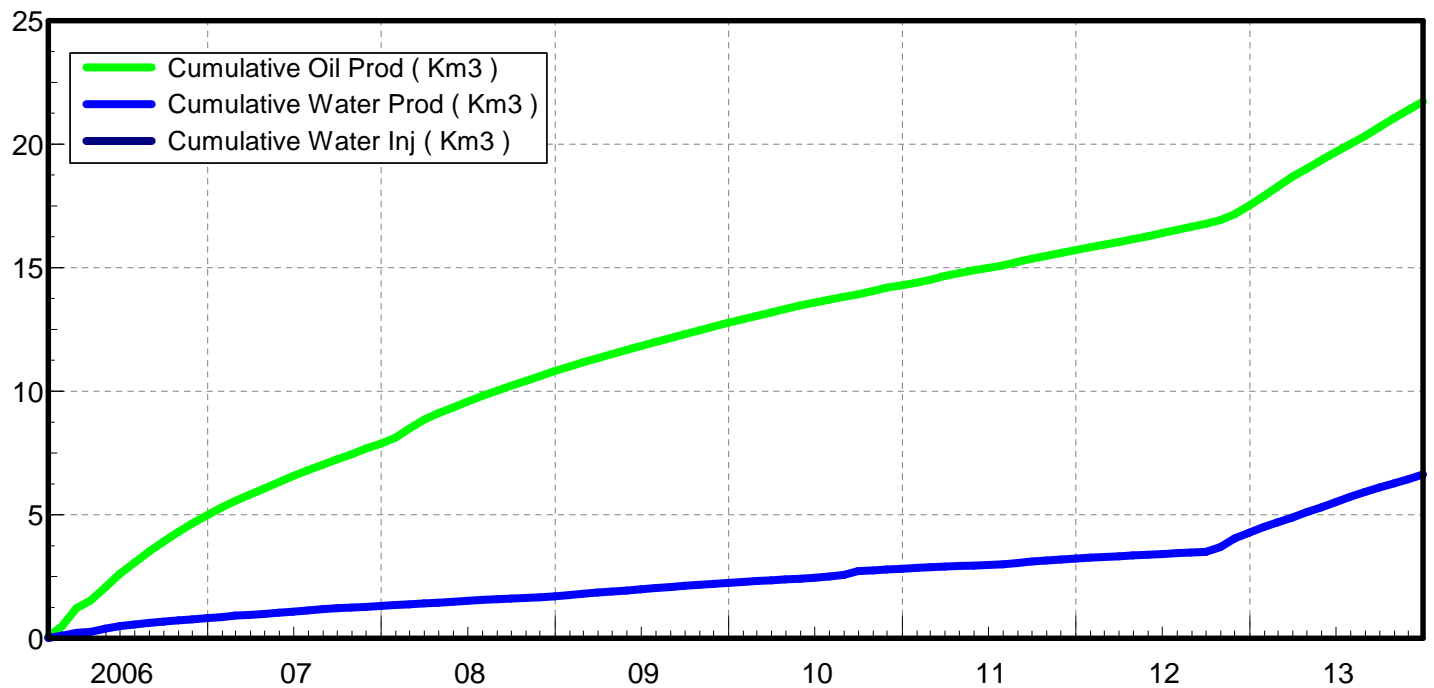
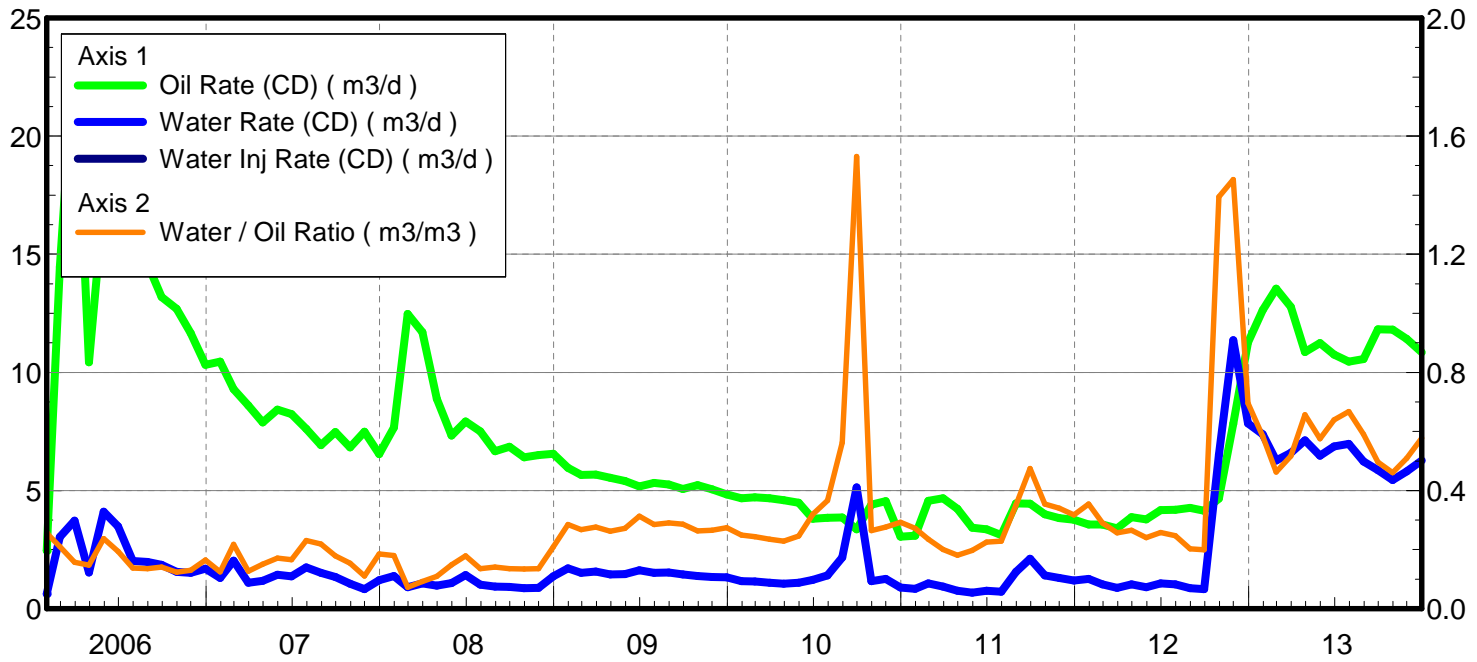
March 12, 2014

Operator: Tundra_O&G_Prtshp

Oil Rate (CD) : 10.85 m³/d

Water Rate (CD) : 6.27 m³/d

Water Inj Rate (CD) : * m³/d



Date	Oil Rate (CD) m3/d	Water Rate (CD) m3/d	Water Oil Ratio m3/m3	Water Inj Rate (CD) m3/d	Cum Oil Prod Km3	Cum Water Prod Km3	Cum Water Inj Km3	Voidage Replacement Ratio	Cum Voidage Replacemt Ratio
1/31/2006	2.45	0.63	0.26		0.08	0.02	0.00	0.000	0.000
2/28/2006	14.45	3.04	0.21		0.48	0.10	0.00	0.000	0.000
3/31/2006	23.80	3.73	0.16		1.22	0.22	0.00	0.000	0.000
4/30/2006	10.43	1.53	0.15		1.53	0.27	0.00	0.000	0.000
5/31/2006	17.30	4.11	0.24		2.07	0.39	0.00	0.000	0.000
6/30/2006	17.98	3.48	0.19		2.61	0.50	0.00	0.000	0.000
7/31/2006	14.64	2.02	0.14		3.06	0.56	0.00	0.000	0.000
8/31/2006	14.58	1.97	0.14		3.51	0.62	0.00	0.000	0.000
9/30/2006	13.19	1.85	0.14		3.91	0.68	0.00	0.000	0.000
10/31/2006	12.69	1.56	0.12		4.30	0.73	0.00	0.000	0.000
11/30/2006	11.66	1.52	0.13		4.65	0.77	0.00	0.000	0.000
12/31/2006	10.32	1.70	0.16		4.97	0.82	0.00	0.000	0.000
1/31/2007	10.45	1.30	0.12		5.30	0.86	0.00	0.000	0.000
2/28/2007	9.30	2.03	0.22		5.56	0.92	0.00	0.000	0.000
3/31/2007	8.60	1.10	0.13		5.82	0.96	0.00	0.000	0.000
4/30/2007	7.89	1.19	0.15		6.06	0.99	0.00	0.000	0.000
5/31/2007	8.42	1.44	0.17		6.32	1.04	0.00	0.000	0.000
6/30/2007	8.24	1.36	0.17		6.57	1.08	0.00	0.000	0.000
7/31/2007	7.61	1.75	0.23		6.80	1.13	0.00	0.000	0.000
8/31/2007	6.92	1.52	0.22		7.02	1.18	0.00	0.000	0.000
9/30/2007	7.47	1.34	0.18		7.24	1.22	0.00	0.000	0.000
10/31/2007	6.82	1.05	0.15		7.45	1.25	0.00	0.000	0.000
11/30/2007	7.49	0.83	0.11		7.68	1.28	0.00	0.000	0.000
12/31/2007	6.55	1.21	0.19		7.88	1.31	0.00	0.000	0.000
1/31/2008	7.66	1.38	0.18		8.12	1.36	0.00	0.000	0.000
2/29/2008	12.48	0.91	0.07		8.48	1.38	0.00	0.000	0.000
3/31/2008	11.70	1.08	0.09		8.84	1.42	0.00	0.000	0.000
4/30/2008	8.88	0.97	0.11		9.11	1.44	0.00	0.000	0.000
5/31/2008	7.33	1.09	0.15		9.34	1.48	0.00	0.000	0.000
6/30/2008	7.92	1.42	0.18		9.57	1.52	0.00	0.000	0.000
7/31/2008	7.50	1.02	0.14		9.81	1.55	0.00	0.000	0.000
8/31/2008	6.66	0.94	0.14		10.01	1.58	0.00	0.000	0.000
9/30/2008	6.85	0.93	0.13		10.22	1.61	0.00	0.000	0.000
10/31/2008	6.41	0.86	0.13		10.42	1.64	0.00	0.000	0.000
11/30/2008	6.50	0.88	0.14		10.61	1.66	0.00	0.000	0.000
12/31/2008	6.55	1.37	0.21		10.82	1.71	0.00	0.000	0.000
1/31/2009	5.97	1.70	0.29		11.00	1.76	0.00	0.000	0.000
2/28/2009	5.67	1.52	0.27		11.16	1.80	0.00	0.000	0.000
3/31/2009	5.67	1.57	0.28		11.34	1.85	0.00	0.000	0.000
4/30/2009	5.54	1.46	0.26		11.50	1.89	0.00	0.000	0.000
5/31/2009	5.41	1.47	0.27		11.67	1.94	0.00	0.000	0.000
6/30/2009	5.17	1.62	0.31		11.82	1.99	0.00	0.000	0.000
7/31/2009	5.33	1.52	0.29		11.99	2.03	0.00	0.000	0.000
8/31/2009	5.26	1.53	0.29		12.15	2.08	0.00	0.000	0.000
9/30/2009	5.06	1.45	0.29		12.30	2.12	0.00	0.000	0.000
10/31/2009	5.23	1.38	0.26		12.47	2.17	0.00	0.000	0.000
11/30/2009	5.05	1.34	0.27		12.62	2.21	0.00	0.000	0.000
12/31/2009	4.83	1.33	0.27		12.77	2.25	0.00	0.000	0.000

Date	Oil Rate (CD) m3/d	Water Rate (CD) m3/d	Water Oil Ratio m3/m3	Water Inj Rate (CD) m3/d	Cum Oil Prod Km3	Cum Water Prod Km3	Cum Water Inj Km3	Voidage Replacement Ratio	Cum Voidage Replacemt Ratio
1/31/2010	4.67	1.16	0.25		12.91	2.29	0.00	0.000	0.000
2/28/2010	4.72	1.15	0.24		13.04	2.32	0.00	0.000	0.000
3/31/2010	4.68	1.10	0.23		13.19	2.35	0.00	0.000	0.000
4/30/2010	4.59	1.05	0.23		13.33	2.38	0.00	0.000	0.000
5/31/2010	4.49	1.10	0.25		13.47	2.42	0.00	0.000	0.000
6/30/2010	3.81	1.22	0.32		13.58	2.45	0.00	0.000	0.000
7/31/2010	3.84	1.41	0.37		13.70	2.50	0.00	0.000	0.000
8/31/2010	3.86	2.17	0.56		13.82	2.56	0.00	0.000	0.000
9/30/2010	3.36	5.14	1.53		13.92	2.72	0.00	0.000	0.000
10/31/2010	4.40	1.16	0.26		14.06	2.75	0.00	0.000	0.000
11/30/2010	4.55	1.26	0.28		14.19	2.79	0.00	0.000	0.000
12/31/2010	3.04	0.89	0.29		14.29	2.82	0.00	0.000	0.000
1/31/2011	3.09	0.84	0.27		14.38	2.85	0.00	0.000	0.000
2/28/2011	4.57	1.08	0.24		14.51	2.88	0.00	0.000	0.000
3/31/2011	4.68	0.94	0.20		14.66	2.91	0.00	0.000	0.000
4/30/2011	4.22	0.77	0.18		14.78	2.93	0.00	0.000	0.000
5/31/2011	3.43	0.68	0.20		14.89	2.95	0.00	0.000	0.000
6/30/2011	3.36	0.76	0.23		14.99	2.97	0.00	0.000	0.000
7/31/2011	3.12	0.71	0.23		15.09	2.99	0.00	0.000	0.000
8/31/2011	4.45	1.56	0.35		15.22	3.04	0.00	0.000	0.000
9/30/2011	4.44	2.11	0.47		15.36	3.11	0.00	0.000	0.000
10/31/2011	3.99	1.41	0.35		15.48	3.15	0.00	0.000	0.000
11/30/2011	3.83	1.30	0.34		15.60	3.19	0.00	0.000	0.000
12/31/2011	3.76	1.19	0.32		15.71	3.23	0.00	0.000	0.000
1/31/2012	3.56	1.26	0.35		15.82	3.26	0.00	0.000	0.000
2/29/2012	3.56	1.03	0.29		15.93	3.29	0.00	0.000	0.000
3/31/2012	3.41	0.88	0.26		16.03	3.32	0.00	0.000	0.000
4/30/2012	3.88	1.03	0.27		16.15	3.35	0.00	0.000	0.000
5/31/2012	3.78	0.91	0.24		16.27	3.38	0.00	0.000	0.000
6/30/2012	4.17	1.08	0.26		16.39	3.41	0.00	0.000	0.000
7/31/2012	4.18	1.03	0.25		16.52	3.45	0.00	0.000	0.000
8/31/2012	4.26	0.86	0.20		16.65	3.47	0.00	0.000	0.000
9/30/2012	4.14	0.82	0.20		16.78	3.50	0.00	0.000	0.000
10/31/2012	4.66	6.50	1.39		16.92	3.70	0.00	0.000	0.000
11/30/2012	7.83	11.37	1.45		17.16	4.04	0.00	0.000	0.000
12/31/2012	11.27	7.84	0.70		17.51	4.28	0.00	0.000	0.000
1/31/2013	12.64	7.38	0.58		17.90	4.51	0.00	0.000	0.000
2/28/2013	13.54	6.27	0.46		18.28	4.69	0.00	0.000	0.000
3/31/2013	12.77	6.60	0.52		18.67	4.89	0.00	0.000	0.000
4/30/2013	10.86	7.13	0.66		19.00	5.11	0.00	0.000	0.000
5/31/2013	11.25	6.47	0.58		19.35	5.31	0.00	0.000	0.000
6/30/2013	10.75	6.87	0.64		19.67	5.51	0.00	0.000	0.000
7/31/2013	10.46	6.98	0.67		19.99	5.73	0.00	0.000	0.000
8/31/2013	10.56	6.24	0.59		20.32	5.92	0.00	0.000	0.000
9/30/2013	11.82	5.86	0.50		20.68	6.10	0.00	0.000	0.000
10/31/2013	11.81	5.44	0.46		21.04	6.27	0.00	0.000	0.000
11/30/2013	11.42	5.81	0.51		21.38	6.44	0.00	0.000	0.000

Date	Oil Rate (CD) m3/d	Water Rate (CD) m3/d	Water Oil Ratio m3/m3	Water Inj Rate (CD) m3/d	Cum Oil Prod Km3	Cum Water Prod Km3	Cum Water Inj Km3	Voidage Replacement Ratio	Cum Voidage Replacemt Ratio
12/31/2013	10.85	6.27	0.58		21.72	6.63	0.00	0.000	0.000

Oil Formation Vol Factor : 1.07100 m3/m3

Water Formation Vol Factor : 1.00150 m3/m3

Water / Oil Ratio : 0.43 m3/m3

Pattern: 03/05-15-008-29Inj Set: SinclairUnit#7

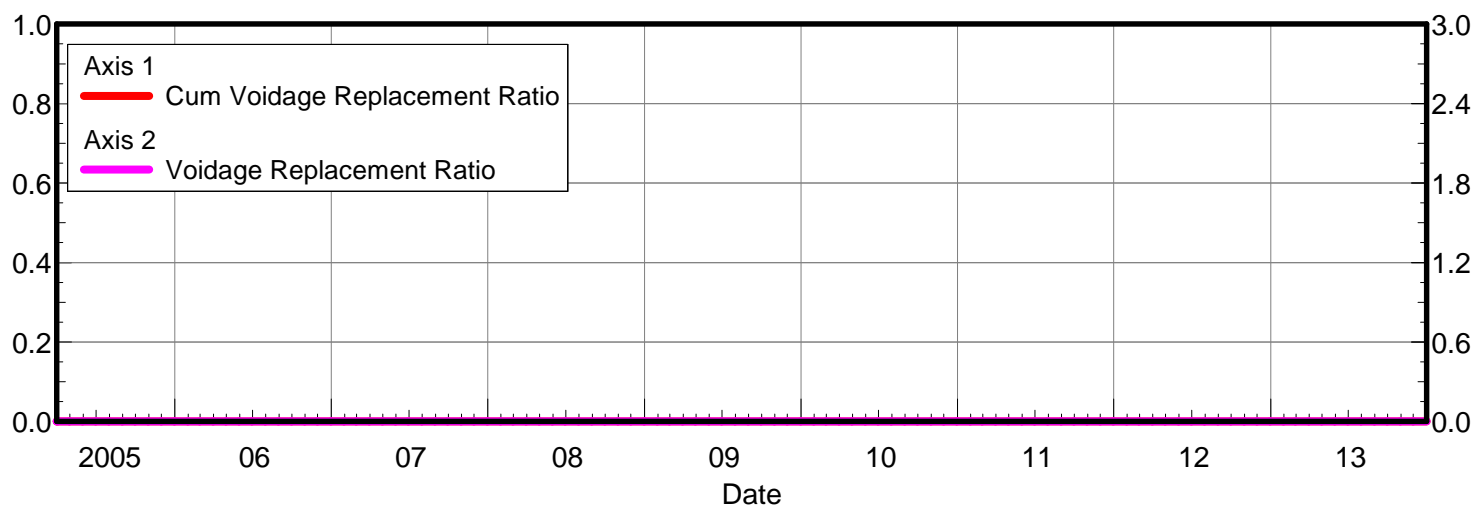
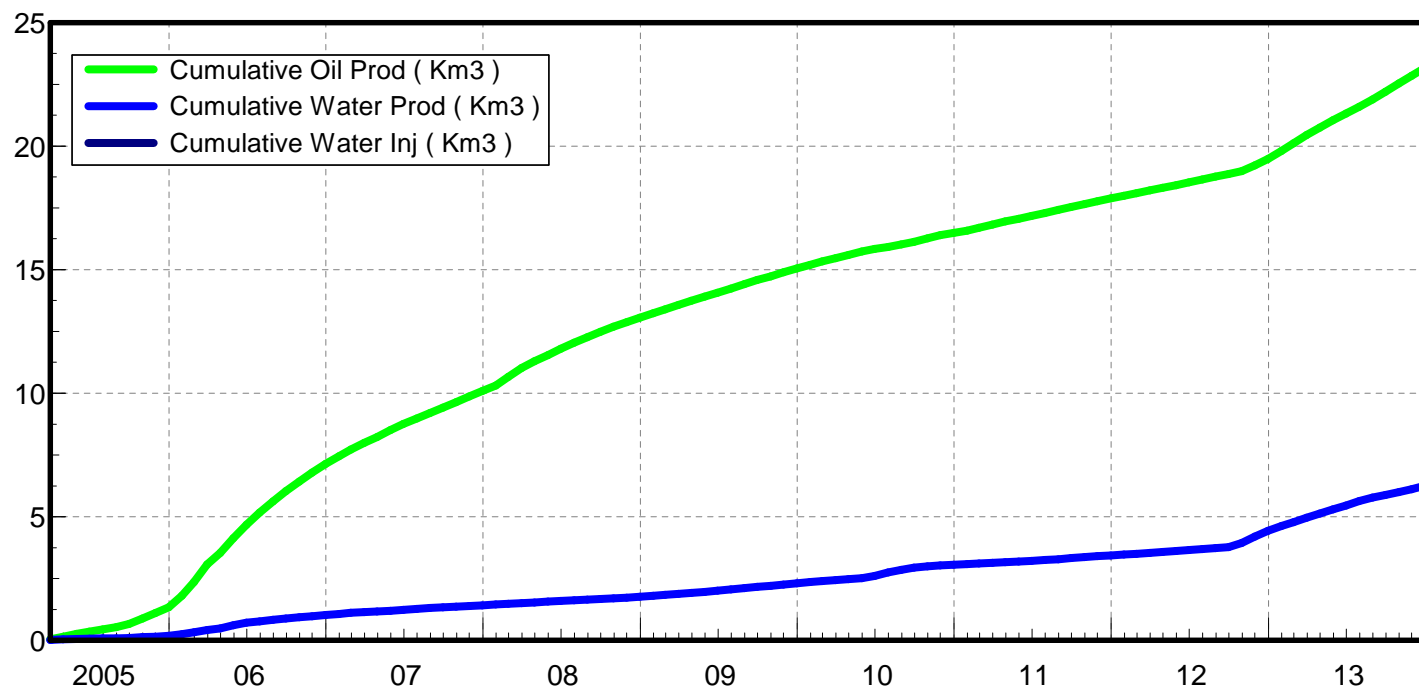
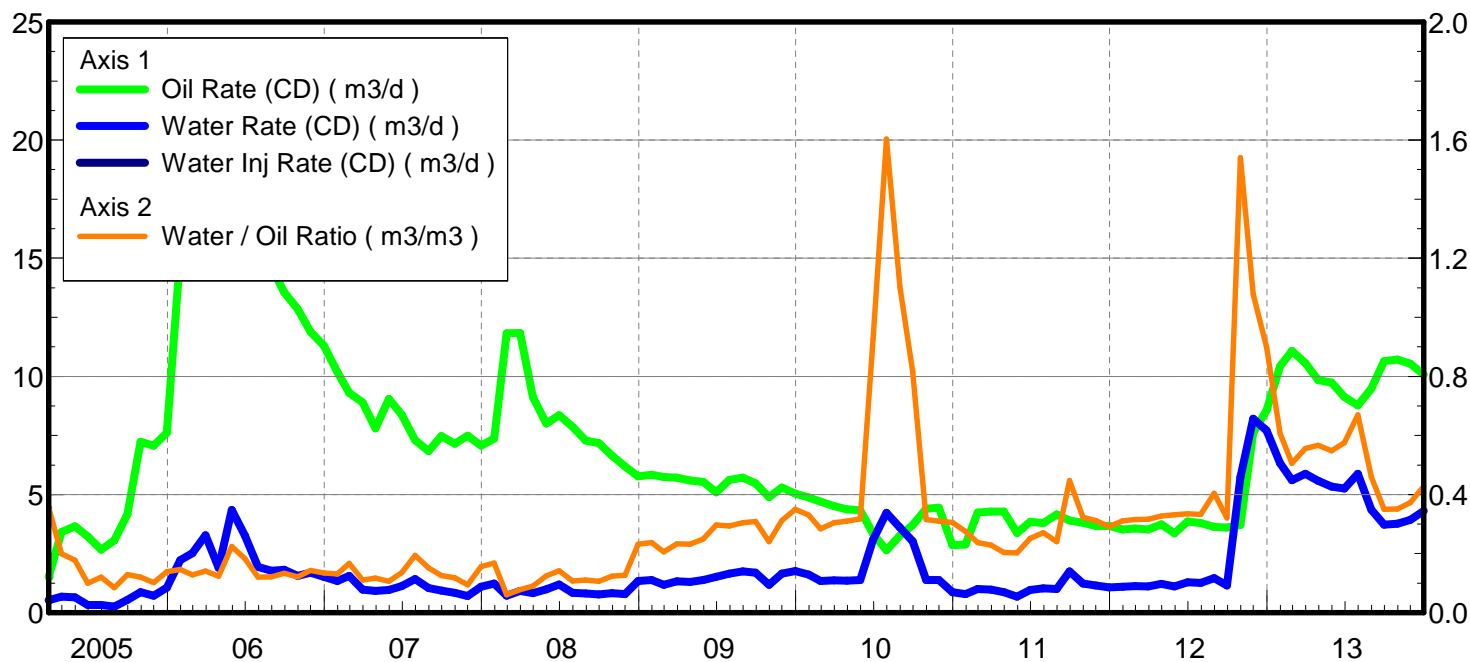
March 12, 2014

Operator: Tundra_O&G_Prtshp

Oil Rate (CD) : 10.08 m3/d

Water Rate (CD) : 4.31 m3/d

Water Inj Rate (CD) : * m3/d



Date	Oil Rate (CD) m3/d	Water Rate (CD) m3/d	Water Oil Ratio m3/m3	Water Inj Rate (CD) m3/d	Cum Oil Prod Km3	Cum Water Prod Km3	Cum Water Inj Km3	Voidage Replacement Ratio	Cum Voidage Replacemt Ratio
3/31/2005	1.51	0.54	0.35		0.05	0.02	0.00	0.000	0.000
4/30/2005	3.42	0.68	0.20		0.15	0.04	0.00	0.000	0.000
5/31/2005	3.66	0.65	0.18		0.26	0.06	0.00	0.000	0.000
6/30/2005	3.22	0.32	0.10		0.36	0.07	0.00	0.000	0.000
7/31/2005	2.67	0.32	0.12		0.44	0.08	0.00	0.000	0.000
8/31/2005	3.06	0.26	0.08		0.54	0.08	0.00	0.000	0.000
9/30/2005	4.17	0.54	0.13		0.66	0.10	0.00	0.000	0.000
10/31/2005	7.23	0.87	0.12		0.89	0.13	0.00	0.000	0.000
11/30/2005	7.07	0.72	0.10		1.10	0.15	0.00	0.000	0.000
12/31/2005	7.61	1.06	0.14		1.33	0.18	0.00	0.000	0.000
1/31/2006	15.16	2.22	0.15		1.80	0.25	0.00	0.000	0.000
2/28/2006	19.77	2.52	0.13		2.36	0.32	0.00	0.000	0.000
3/31/2006	23.26	3.27	0.14		3.08	0.42	0.00	0.000	0.000
4/30/2006	15.32	1.90	0.12		3.54	0.48	0.00	0.000	0.000
5/31/2006	19.40	4.34	0.22		4.14	0.61	0.00	0.000	0.000
6/30/2006	17.87	3.27	0.18		4.68	0.71	0.00	0.000	0.000
7/31/2006	16.04	1.94	0.12		5.17	0.77	0.00	0.000	0.000
8/31/2006	14.63	1.77	0.12		5.63	0.83	0.00	0.000	0.000
9/30/2006	13.56	1.81	0.13		6.03	0.88	0.00	0.000	0.000
10/31/2006	12.85	1.56	0.12		6.43	0.93	0.00	0.000	0.000
11/30/2006	11.89	1.70	0.14		6.79	0.98	0.00	0.000	0.000
12/31/2006	11.29	1.52	0.13		7.14	1.03	0.00	0.000	0.000
1/31/2007	10.19	1.34	0.13		7.45	1.07	0.00	0.000	0.000
2/28/2007	9.30	1.55	0.17		7.72	1.11	0.00	0.000	0.000
3/31/2007	8.89	0.98	0.11		7.99	1.14	0.00	0.000	0.000
4/30/2007	7.79	0.92	0.12		8.22	1.17	0.00	0.000	0.000
5/31/2007	9.05	0.96	0.11		8.51	1.20	0.00	0.000	0.000
6/30/2007	8.38	1.13	0.14		8.76	1.24	0.00	0.000	0.000
7/31/2007	7.30	1.42	0.19		8.98	1.28	0.00	0.000	0.000
8/31/2007	6.85	1.04	0.15		9.20	1.31	0.00	0.000	0.000
9/30/2007	7.48	0.94	0.13		9.42	1.34	0.00	0.000	0.000
10/31/2007	7.15	0.84	0.12		9.64	1.37	0.00	0.000	0.000
11/30/2007	7.49	0.70	0.09		9.87	1.39	0.00	0.000	0.000
12/31/2007	7.08	1.10	0.16		10.09	1.42	0.00	0.000	0.000
1/31/2008	7.36	1.24	0.17		10.31	1.46	0.00	0.000	0.000
2/29/2008	11.83	0.72	0.06		10.66	1.48	0.00	0.000	0.000
3/31/2008	11.84	0.93	0.08		11.02	1.51	0.00	0.000	0.000
4/30/2008	9.13	0.82	0.09		11.30	1.53	0.00	0.000	0.000
5/31/2008	8.00	0.99	0.12		11.55	1.56	0.00	0.000	0.000
6/30/2008	8.36	1.19	0.14		11.80	1.60	0.00	0.000	0.000
7/31/2008	7.86	0.85	0.11		12.04	1.63	0.00	0.000	0.000
8/31/2008	7.28	0.81	0.11		12.27	1.65	0.00	0.000	0.000
9/30/2008	7.18	0.77	0.11		12.48	1.67	0.00	0.000	0.000
10/31/2008	6.65	0.82	0.12		12.69	1.70	0.00	0.000	0.000
11/30/2008	6.20	0.79	0.13		12.87	1.72	0.00	0.000	0.000
12/31/2008	5.77	1.34	0.23		13.05	1.77	0.00	0.000	0.000
1/31/2009	5.84	1.39	0.24		13.23	1.81	0.00	0.000	0.000
2/28/2009	5.74	1.18	0.21		13.39	1.84	0.00	0.000	0.000

Date	Oil Rate (CD) m3/d	Water Rate (CD) m3/d	Water Oil Ratio m3/m3	Water Inj Rate (CD) m3/d	Cum Oil Prod Km3	Cum Water Prod Km3	Cum Water Inj Km3	Voidage Replacement Ratio	Cum Voidage Replacemt Ratio
3/31/2009	5.71	1.33	0.23		13.57	1.88	0.00	0.000	0.000
4/30/2009	5.60	1.30	0.23		13.74	1.92	0.00	0.000	0.000
5/31/2009	5.54	1.38	0.25		13.91	1.96	0.00	0.000	0.000
6/30/2009	5.10	1.51	0.30		14.06	2.01	0.00	0.000	0.000
7/31/2009	5.62	1.65	0.29		14.24	2.06	0.00	0.000	0.000
8/31/2009	5.71	1.74	0.30		14.41	2.12	0.00	0.000	0.000
9/30/2009	5.48	1.69	0.31		14.58	2.17	0.00	0.000	0.000
10/31/2009	4.89	1.18	0.24		14.73	2.20	0.00	0.000	0.000
11/30/2009	5.30	1.65	0.31		14.89	2.25	0.00	0.000	0.000
12/31/2009	5.03	1.76	0.35		15.05	2.31	0.00	0.000	0.000
1/31/2010	4.88	1.61	0.33		15.20	2.36	0.00	0.000	0.000
2/28/2010	4.70	1.34	0.28		15.33	2.39	0.00	0.000	0.000
3/31/2010	4.51	1.37	0.30		15.47	2.44	0.00	0.000	0.000
4/30/2010	4.38	1.36	0.31		15.60	2.48	0.00	0.000	0.000
5/31/2010	4.34	1.38	0.32		15.73	2.52	0.00	0.000	0.000
6/30/2010	3.35	3.09	0.92		15.83	2.61	0.00	0.000	0.000
7/31/2010	2.64	4.23	1.60		15.92	2.74	0.00	0.000	0.000
8/31/2010	3.27	3.61	1.10		16.02	2.86	0.00	0.000	0.000
9/30/2010	3.71	3.02	0.81		16.13	2.95	0.00	0.000	0.000
10/31/2010	4.40	1.39	0.32		16.27	2.99	0.00	0.000	0.000
11/30/2010	4.44	1.38	0.31		16.40	3.03	0.00	0.000	0.000
12/31/2010	2.86	0.87	0.31		16.49	3.06	0.00	0.000	0.000
1/31/2011	2.88	0.79	0.28		16.58	3.08	0.00	0.000	0.000
2/28/2011	4.25	1.01	0.24		16.70	3.11	0.00	0.000	0.000
3/31/2011	4.28	0.98	0.23		16.83	3.14	0.00	0.000	0.000
4/30/2011	4.28	0.87	0.20		16.96	3.17	0.00	0.000	0.000
5/31/2011	3.37	0.68	0.20		17.06	3.19	0.00	0.000	0.000
6/30/2011	3.85	0.97	0.25		17.18	3.22	0.00	0.000	0.000
7/31/2011	3.80	1.03	0.27		17.29	3.25	0.00	0.000	0.000
8/31/2011	4.15	1.00	0.24		17.42	3.28	0.00	0.000	0.000
9/30/2011	3.90	1.75	0.45		17.54	3.33	0.00	0.000	0.000
10/31/2011	3.81	1.23	0.32		17.66	3.37	0.00	0.000	0.000
11/30/2011	3.67	1.15	0.31		17.77	3.41	0.00	0.000	0.000
12/31/2011	3.68	1.07	0.29		17.88	3.44	0.00	0.000	0.000
1/31/2012	3.53	1.10	0.31		17.99	3.47	0.00	0.000	0.000
2/29/2012	3.56	1.12	0.31		18.10	3.50	0.00	0.000	0.000
3/31/2012	3.53	1.11	0.32		18.20	3.54	0.00	0.000	0.000
4/30/2012	3.74	1.22	0.33		18.32	3.58	0.00	0.000	0.000
5/31/2012	3.36	1.11	0.33		18.42	3.61	0.00	0.000	0.000
6/30/2012	3.86	1.29	0.33		18.54	3.65	0.00	0.000	0.000
7/31/2012	3.80	1.26	0.33		18.65	3.69	0.00	0.000	0.000
8/31/2012	3.63	1.47	0.40		18.77	3.73	0.00	0.000	0.000
9/30/2012	3.61	1.16	0.32		18.88	3.77	0.00	0.000	0.000
10/31/2012	3.72	5.73	1.54		18.99	3.95	0.00	0.000	0.000
11/30/2012	7.62	8.21	1.08		19.22	4.19	0.00	0.000	0.000
12/31/2012	8.57	7.70	0.90		19.48	4.43	0.00	0.000	0.000
1/31/2013	10.43	6.33	0.61		19.81	4.63	0.00	0.000	0.000
2/28/2013	11.08	5.61	0.51		20.12	4.78	0.00	0.000	0.000

Date	Oil Rate (CD) m3/d	Water Rate (CD) m3/d	Water Oil Ratio m3/m3	Water Inj Rate (CD) m3/d	Cum Oil Prod Km3	Cum Water Prod Km3	Cum Water Inj Km3	Voidage Replacement Ratio	Cum Voidage Replacemt Ratio
3/31/2013	10.56	5.87	0.56		20.45	4.97	0.00	0.000	0.000
4/30/2013	9.85	5.59	0.57		20.74	5.13	0.00	0.000	0.000
5/31/2013	9.73	5.33	0.55		21.04	5.30	0.00	0.000	0.000
6/30/2013	9.12	5.25	0.58		21.32	5.46	0.00	0.000	0.000
7/31/2013	8.78	5.87	0.67		21.59	5.64	0.00	0.000	0.000
8/31/2013	9.48	4.37	0.46		21.88	5.77	0.00	0.000	0.000
9/30/2013	10.64	3.73	0.35		22.20	5.89	0.00	0.000	0.000
10/31/2013	10.72	3.77	0.35		22.53	6.00	0.00	0.000	0.000
11/30/2013	10.54	3.93	0.37		22.85	6.12	0.00	0.000	0.000
12/31/2013	10.08	4.31	0.43		23.16	6.26	0.00	0.000	0.000

Pattern: 04/12-15-008-29Inj Set: SinclairUnit#7

Oil Formation Vol Factor : 1.07100 m3/m3

Water Formation Vol Factor : 1.00150 m3/m3

Water / Oil Ratio : 0.62 m3/m3

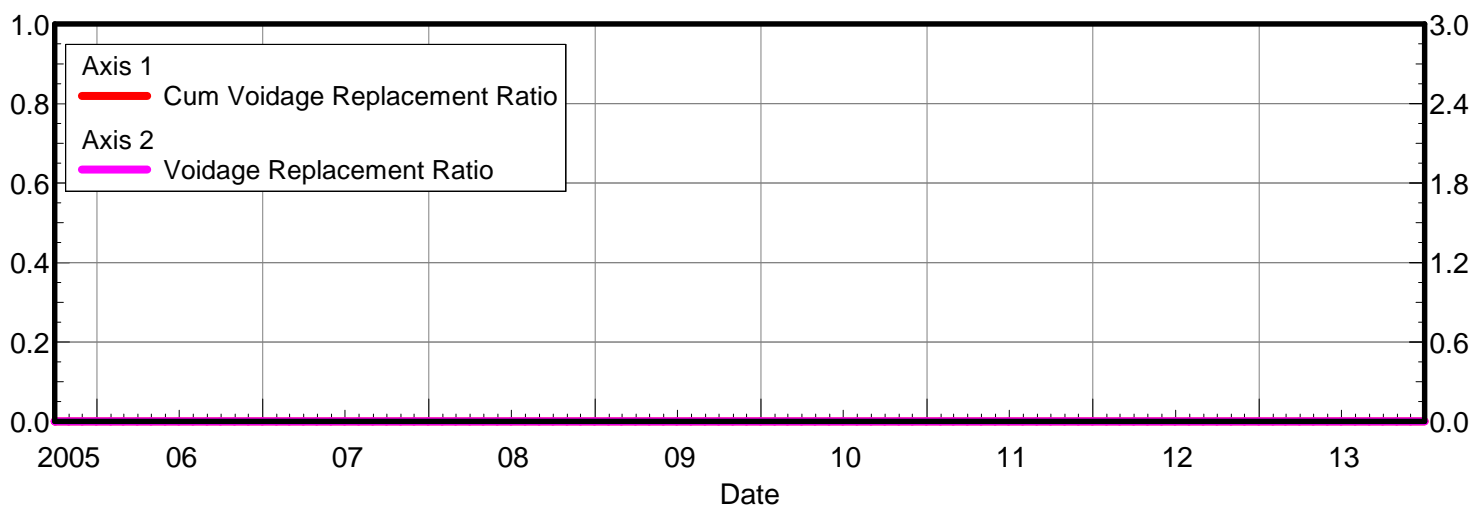
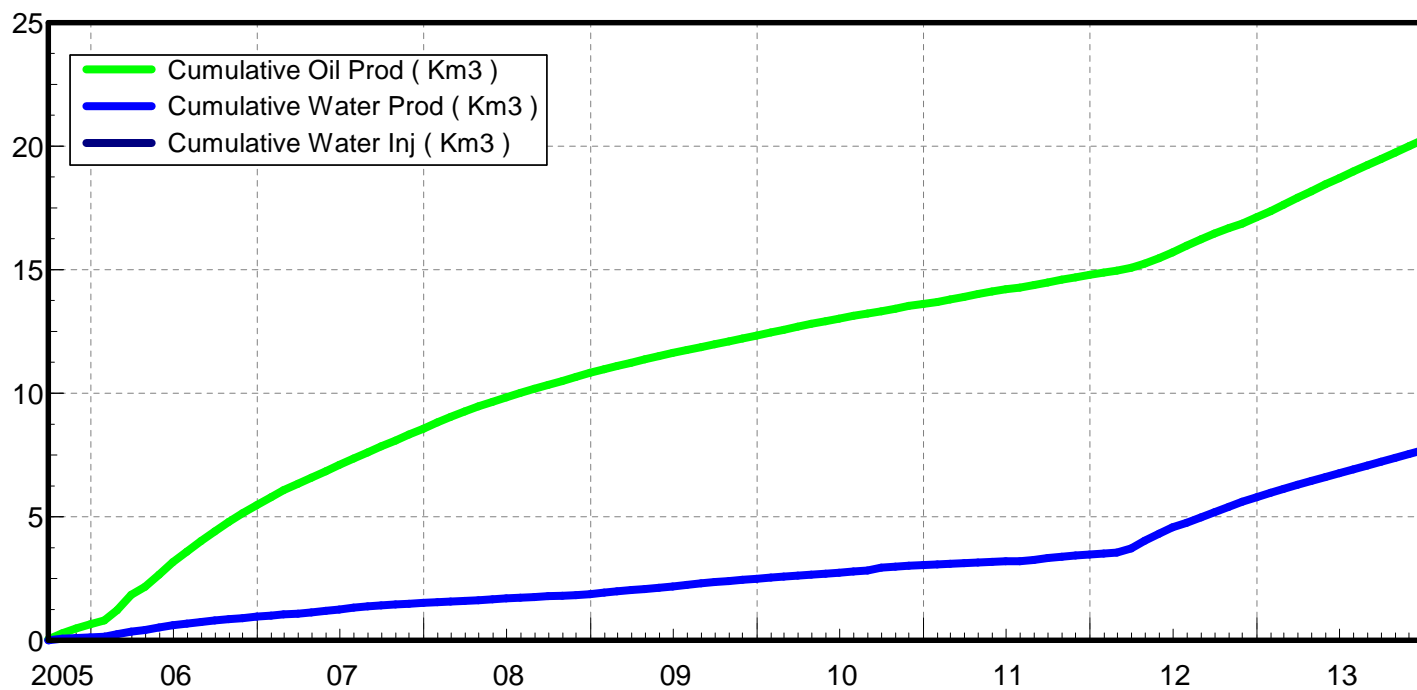
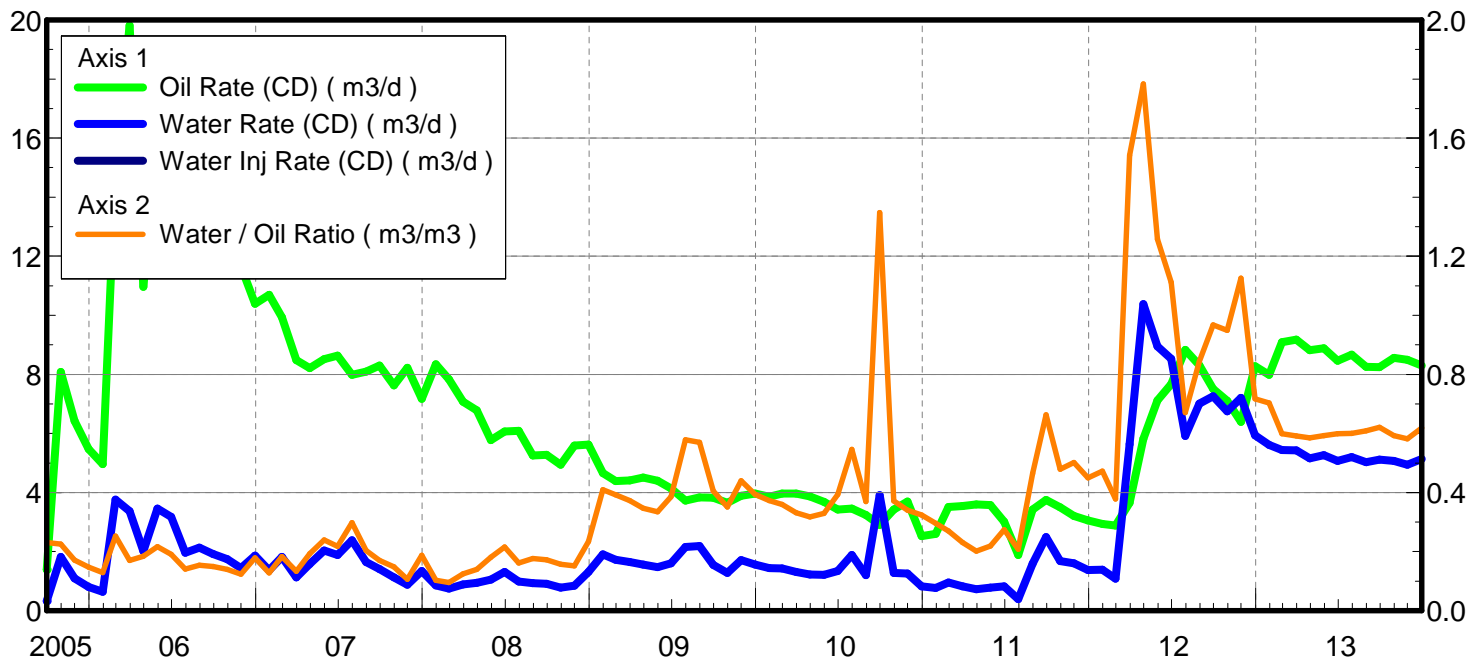
March 12, 2014

Operator: Tundra_O&G_Prtshp

Oil Rate (CD) : 8.30 m3/d

Water Rate (CD) : 5.14 m3/d

Water Inj Rate (CD) : * m3/d



Date	Oil Rate (CD) m3/d	Water Rate (CD) m3/d	Water Oil Ratio m3/m3	Water Inj Rate (CD) m3/d	Cum Oil Prod Km3	Cum Water Prod Km3	Cum Water Inj Km3	Voidage Replacement Ratio	Cum Voidage Replacemt Ratio
9/30/2005	1.39	0.32	0.23		0.04	0.01	0.00	0.000	0.000
10/31/2005	8.08	1.82	0.23		0.29	0.07	0.00	0.000	0.000
11/30/2005	6.43	1.10	0.17		0.49	0.10	0.00	0.000	0.000
12/31/2005	5.47	0.80	0.15		0.65	0.12	0.00	0.000	0.000
1/31/2006	4.96	0.64	0.13		0.81	0.14	0.00	0.000	0.000
2/28/2006	14.87	3.76	0.25		1.22	0.25	0.00	0.000	0.000
3/31/2006	19.81	3.37	0.17		1.84	0.35	0.00	0.000	0.000
4/30/2006	10.96	2.02	0.18		2.17	0.41	0.00	0.000	0.000
5/31/2006	15.95	3.46	0.22		2.66	0.52	0.00	0.000	0.000
6/30/2006	16.64	3.18	0.19		3.16	0.62	0.00	0.000	0.000
7/31/2006	13.86	1.96	0.14		3.59	0.68	0.00	0.000	0.000
8/31/2006	13.85	2.14	0.15		4.02	0.74	0.00	0.000	0.000
9/30/2006	12.80	1.91	0.15		4.40	0.80	0.00	0.000	0.000
10/31/2006	12.47	1.74	0.14		4.79	0.86	0.00	0.000	0.000
11/30/2006	11.65	1.44	0.12		5.14	0.90	0.00	0.000	0.000
12/31/2006	10.39	1.86	0.18		5.46	0.96	0.00	0.000	0.000
1/31/2007	10.70	1.37	0.13		5.79	1.00	0.00	0.000	0.000
2/28/2007	9.94	1.82	0.18		6.07	1.05	0.00	0.000	0.000
3/31/2007	8.48	1.13	0.13		6.34	1.08	0.00	0.000	0.000
4/30/2007	8.22	1.58	0.19		6.58	1.13	0.00	0.000	0.000
5/31/2007	8.52	2.04	0.24		6.85	1.20	0.00	0.000	0.000
6/30/2007	8.63	1.88	0.22		7.10	1.25	0.00	0.000	0.000
7/31/2007	7.99	2.38	0.30		7.35	1.33	0.00	0.000	0.000
8/31/2007	8.09	1.65	0.20		7.60	1.38	0.00	0.000	0.000
9/30/2007	8.29	1.41	0.17		7.85	1.42	0.00	0.000	0.000
10/31/2007	7.63	1.13	0.15		8.09	1.45	0.00	0.000	0.000
11/30/2007	8.22	0.88	0.11		8.34	1.48	0.00	0.000	0.000
12/31/2007	7.18	1.34	0.19		8.56	1.52	0.00	0.000	0.000
1/31/2008	8.34	0.86	0.10		8.82	1.55	0.00	0.000	0.000
2/29/2008	7.83	0.75	0.10		9.04	1.57	0.00	0.000	0.000
3/31/2008	7.08	0.89	0.13		9.26	1.60	0.00	0.000	0.000
4/30/2008	6.78	0.94	0.14		9.47	1.63	0.00	0.000	0.000
5/31/2008	5.77	1.05	0.18		9.65	1.66	0.00	0.000	0.000
6/30/2008	6.06	1.31	0.22		9.83	1.70	0.00	0.000	0.000
7/31/2008	6.09	0.99	0.16		10.02	1.73	0.00	0.000	0.000
8/31/2008	5.26	0.93	0.18		10.18	1.76	0.00	0.000	0.000
9/30/2008	5.27	0.91	0.17		10.34	1.78	0.00	0.000	0.000
10/31/2008	4.94	0.78	0.16		10.49	1.81	0.00	0.000	0.000
11/30/2008	5.59	0.85	0.15		10.66	1.83	0.00	0.000	0.000
12/31/2008	5.62	1.31	0.23		10.83	1.87	0.00	0.000	0.000
1/31/2009	4.65	1.90	0.41		10.98	1.93	0.00	0.000	0.000
2/28/2009	4.38	1.72	0.39		11.10	1.98	0.00	0.000	0.000
3/31/2009	4.41	1.64	0.37		11.24	2.03	0.00	0.000	0.000
4/30/2009	4.51	1.56	0.35		11.37	2.08	0.00	0.000	0.000
5/31/2009	4.40	1.47	0.34		11.51	2.13	0.00	0.000	0.000
6/30/2009	4.14	1.60	0.39		11.63	2.17	0.00	0.000	0.000
7/31/2009	3.72	2.16	0.58		11.75	2.24	0.00	0.000	0.000
8/31/2009	3.84	2.19	0.57		11.87	2.31	0.00	0.000	0.000

Date	Oil Rate (CD) m3/d	Water Rate (CD) m3/d	Water Oil Ratio m3/m3	Water Inj Rate (CD) m3/d	Cum Oil Prod Km3	Cum Water Prod Km3	Cum Water Inj Km3	Voidage Replacement Ratio	Cum Voidage Replacemt Ratio
9/30/2009	3.83	1.55	0.40		11.98	2.35	0.00	0.000	0.000
10/31/2009	3.65	1.28	0.35		12.09	2.39	0.00	0.000	0.000
11/30/2009	3.89	1.71	0.44		12.21	2.45	0.00	0.000	0.000
12/31/2009	3.96	1.56	0.39		12.33	2.49	0.00	0.000	0.000
1/31/2010	3.86	1.44	0.37		12.45	2.54	0.00	0.000	0.000
2/28/2010	3.96	1.43	0.36		12.57	2.58	0.00	0.000	0.000
3/31/2010	3.96	1.31	0.33		12.69	2.62	0.00	0.000	0.000
4/30/2010	3.86	1.23	0.32		12.80	2.66	0.00	0.000	0.000
5/31/2010	3.69	1.21	0.33		12.92	2.69	0.00	0.000	0.000
6/30/2010	3.43	1.35	0.39		13.02	2.73	0.00	0.000	0.000
7/31/2010	3.46	1.89	0.55		13.13	2.79	0.00	0.000	0.000
8/31/2010	3.24	1.20	0.37		13.23	2.83	0.00	0.000	0.000
9/30/2010	2.91	3.92	1.35		13.32	2.95	0.00	0.000	0.000
10/31/2010	3.42	1.27	0.37		13.42	2.99	0.00	0.000	0.000
11/30/2010	3.70	1.26	0.34		13.53	3.02	0.00	0.000	0.000
12/31/2010	2.53	0.82	0.32		13.61	3.05	0.00	0.000	0.000
1/31/2011	2.60	0.77	0.30		13.69	3.07	0.00	0.000	0.000
2/28/2011	3.51	0.95	0.27		13.79	3.10	0.00	0.000	0.000
3/31/2011	3.54	0.82	0.23		13.90	3.13	0.00	0.000	0.000
4/30/2011	3.60	0.73	0.20		14.01	3.15	0.00	0.000	0.000
5/31/2011	3.57	0.78	0.22		14.12	3.17	0.00	0.000	0.000
6/30/2011	3.01	0.82	0.27		14.21	3.20	0.00	0.000	0.000
7/31/2011	1.89	0.39	0.21		14.27	3.21	0.00	0.000	0.000
8/31/2011	3.42	1.59	0.46		14.37	3.26	0.00	0.000	0.000
9/30/2011	3.75	2.49	0.66		14.49	3.33	0.00	0.000	0.000
10/31/2011	3.50	1.68	0.48		14.59	3.38	0.00	0.000	0.000
11/30/2011	3.21	1.61	0.50		14.69	3.43	0.00	0.000	0.000
12/31/2011	3.05	1.37	0.45		14.79	3.48	0.00	0.000	0.000
1/31/2012	2.93	1.39	0.47		14.88	3.52	0.00	0.000	0.000
2/29/2012	2.88	1.09	0.38		14.96	3.55	0.00	0.000	0.000
3/31/2012	3.66	5.64	1.54		15.07	3.72	0.00	0.000	0.000
4/30/2012	5.82	10.38	1.78		15.25	4.04	0.00	0.000	0.000
5/31/2012	7.12	8.95	1.26		15.47	4.31	0.00	0.000	0.000
6/30/2012	7.67	8.53	1.11		15.70	4.57	0.00	0.000	0.000
7/31/2012	8.83	5.92	0.67		15.97	4.75	0.00	0.000	0.000
8/31/2012	8.31	7.01	0.84		16.23	4.97	0.00	0.000	0.000
9/30/2012	7.50	7.26	0.97		16.46	5.19	0.00	0.000	0.000
10/31/2012	7.11	6.75	0.95		16.68	5.40	0.00	0.000	0.000
11/30/2012	6.39	7.20	1.13		16.87	5.61	0.00	0.000	0.000
12/31/2012	8.28	5.93	0.72		17.12	5.80	0.00	0.000	0.000
1/31/2013	7.98	5.61	0.70		17.37	5.97	0.00	0.000	0.000
2/28/2013	9.09	5.44	0.60		17.63	6.12	0.00	0.000	0.000
3/31/2013	9.17	5.43	0.59		17.91	6.29	0.00	0.000	0.000
4/30/2013	8.82	5.16	0.58		18.17	6.45	0.00	0.000	0.000
5/31/2013	8.88	5.26	0.59		18.45	6.61	0.00	0.000	0.000
6/30/2013	8.46	5.07	0.60		18.70	6.76	0.00	0.000	0.000
7/31/2013	8.66	5.20	0.60		18.97	6.92	0.00	0.000	0.000
8/31/2013	8.25	5.03	0.61		19.23	7.08	0.00	0.000	0.000

Date	Oil Rate (CD) m3/d	Water Rate (CD) m3/d	Water Oil Ratio m3/m3	Water Inj Rate (CD) m3/d	Cum Oil Prod Km3	Cum Water Prod Km3	Cum Water Inj Km3	Voidage Replacement Ratio	Cum Voidage Replacemt Ratio
9/30/2013	8.24	5.12	0.62		19.48	7.23	0.00	0.000	0.000
10/31/2013	8.56	5.07	0.59		19.74	7.39	0.00	0.000	0.000
11/30/2013	8.50	4.94	0.58		20.00	7.54	0.00	0.000	0.000
12/31/2013	8.30	5.14	0.62		20.25	7.70	0.00	0.000	0.000

Pattern: 02/01-23-008-29Inj Set: SinclairUnit#7

Oil Formation Vol Factor : 1.07100 m³/m³

Water Formation Vol Factor : 1.00150 m³/m³

Water / Oil Ratio : 0.28 m³/m³

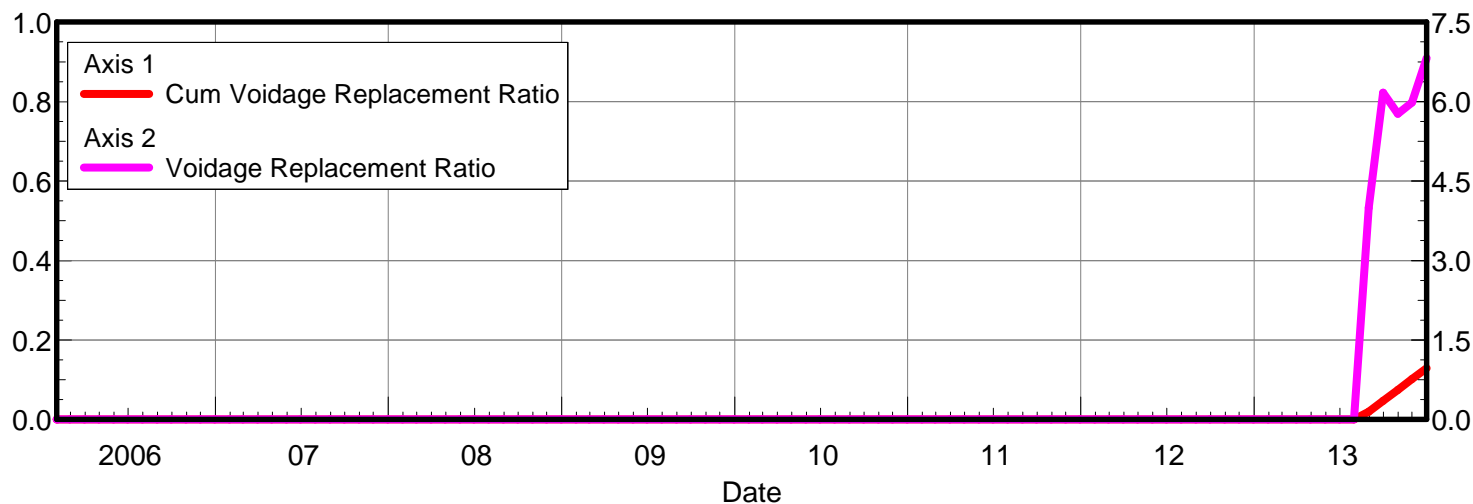
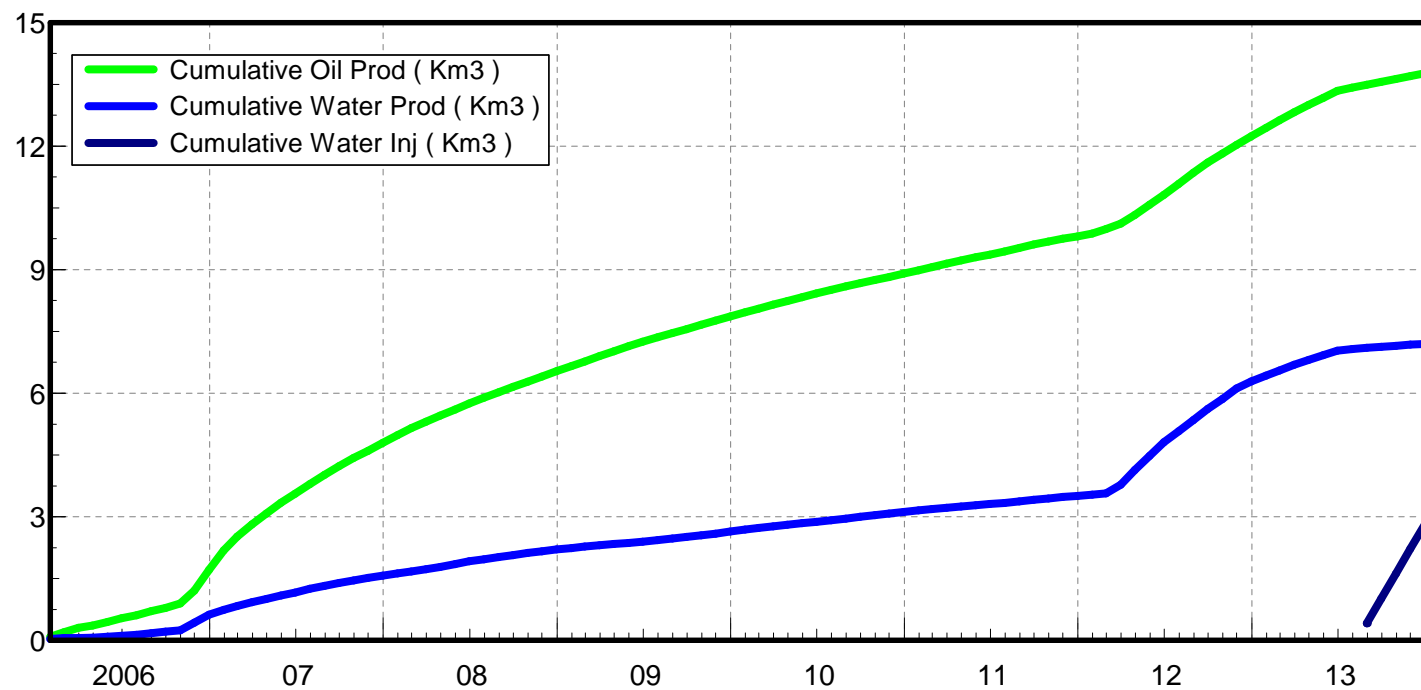
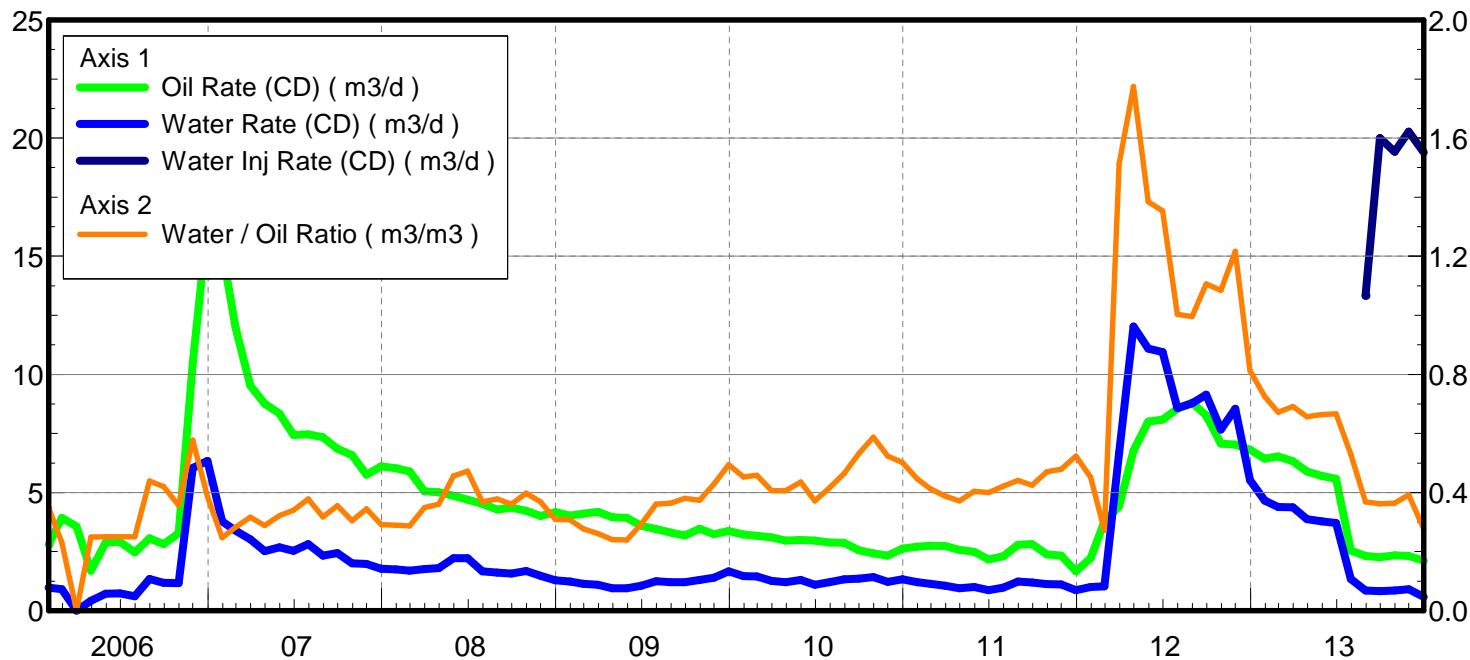
March 12, 2014

Operator: Tundra_O&G_Prtshp

Oil Rate (CD) : 2.11 m³/d

Water Rate (CD) : 0.58 m³/d

Water Inj Rate (CD) : 19.39 m³/d



Date	Oil Rate (CD) m3/d	Water Rate (CD) m3/d	Water Oil Ratio m3/m3	Water Inj Rate (CD) m3/d	Cum Oil Prod Km3	Cum Water Prod Km3	Cum Water Inj Km3	Voidage Replacement Ratio	Cum Voidage Replacemt Ratio
1/31/2006	2.80	0.97	0.35		0.09	0.03	0.00	0.000	0.000
2/28/2006	3.93	0.91	0.23		0.20	0.06	0.00	0.000	0.000
3/31/2006	3.57	0.00	0.00		0.31	0.06	0.00	0.000	0.000
4/30/2006	1.69	0.42	0.25		0.36	0.07	0.00	0.000	0.000
5/31/2006	2.89	0.72	0.25		0.45	0.09	0.00	0.000	0.000
6/30/2006	2.92	0.73	0.25		0.54	0.11	0.00	0.000	0.000
7/31/2006	2.46	0.62	0.25		0.61	0.13	0.00	0.000	0.000
8/31/2006	3.06	1.34	0.44		0.71	0.17	0.00	0.000	0.000
9/30/2006	2.81	1.18	0.42		0.79	0.21	0.00	0.000	0.000
10/31/2006	3.28	1.17	0.36		0.89	0.24	0.00	0.000	0.000
11/30/2006	10.47	6.04	0.58		1.21	0.43	0.00	0.000	0.000
12/31/2006	16.39	6.33	0.39		1.71	0.62	0.00	0.000	0.000
1/31/2007	15.26	3.78	0.25		2.19	0.74	0.00	0.000	0.000
2/28/2007	11.98	3.39	0.28		2.52	0.83	0.00	0.000	0.000
3/31/2007	9.52	3.02	0.32		2.82	0.93	0.00	0.000	0.000
4/30/2007	8.76	2.52	0.29		3.08	1.00	0.00	0.000	0.000
5/31/2007	8.34	2.68	0.32		3.34	1.09	0.00	0.000	0.000
6/30/2007	7.44	2.53	0.34		3.56	1.16	0.00	0.000	0.000
7/31/2007	7.46	2.82	0.38		3.79	1.25	0.00	0.000	0.000
8/31/2007	7.34	2.33	0.32		4.02	1.32	0.00	0.000	0.000
9/30/2007	6.85	2.43	0.36		4.23	1.40	0.00	0.000	0.000
10/31/2007	6.59	2.00	0.30		4.43	1.46	0.00	0.000	0.000
11/30/2007	5.75	1.98	0.34		4.60	1.52	0.00	0.000	0.000
12/31/2007	6.10	1.78	0.29		4.79	1.57	0.00	0.000	0.000
1/31/2008	6.03	1.75	0.29		4.98	1.63	0.00	0.000	0.000
2/29/2008	5.89	1.69	0.29		5.15	1.68	0.00	0.000	0.000
3/31/2008	5.05	1.76	0.35		5.31	1.73	0.00	0.000	0.000
4/30/2008	5.01	1.81	0.36		5.46	1.78	0.00	0.000	0.000
5/31/2008	4.86	2.22	0.46		5.61	1.85	0.00	0.000	0.000
6/30/2008	4.70	2.22	0.47		5.75	1.92	0.00	0.000	0.000
7/31/2008	4.53	1.67	0.37		5.89	1.97	0.00	0.000	0.000
8/31/2008	4.28	1.62	0.38		6.02	2.02	0.00	0.000	0.000
9/30/2008	4.36	1.57	0.36		6.15	2.07	0.00	0.000	0.000
10/31/2008	4.23	1.68	0.40		6.28	2.12	0.00	0.000	0.000
11/30/2008	4.00	1.48	0.37		6.40	2.16	0.00	0.000	0.000
12/31/2008	4.17	1.29	0.31		6.53	2.20	0.00	0.000	0.000
1/31/2009	4.02	1.24	0.31		6.66	2.24	0.00	0.000	0.000
2/28/2009	4.11	1.14	0.28		6.77	2.28	0.00	0.000	0.000
3/31/2009	4.19	1.09	0.26		6.90	2.31	0.00	0.000	0.000
4/30/2009	3.95	0.95	0.24		7.02	2.34	0.00	0.000	0.000
5/31/2009	3.93	0.94	0.24		7.14	2.37	0.00	0.000	0.000
6/30/2009	3.59	1.05	0.29		7.25	2.40	0.00	0.000	0.000
7/31/2009	3.45	1.24	0.36		7.36	2.44	0.00	0.000	0.000
8/31/2009	3.31	1.20	0.36		7.46	2.47	0.00	0.000	0.000
9/30/2009	3.19	1.21	0.38		7.56	2.51	0.00	0.000	0.000
10/31/2009	3.47	1.30	0.37		7.66	2.55	0.00	0.000	0.000
11/30/2009	3.24	1.39	0.43		7.76	2.59	0.00	0.000	0.000
12/31/2009	3.37	1.66	0.49		7.86	2.64	0.00	0.000	0.000

Date	Oil Rate (CD) m3/d	Water Rate (CD) m3/d	Water Oil Ratio m3/m3	Water Inj Rate (CD) m3/d	Cum Oil Prod Km3	Cum Water Prod Km3	Cum Water Inj Km3	Voidage Replacement Ratio	Cum Voidage Replacemt Ratio
1/31/2010	3.22	1.46	0.45		7.96	2.69	0.00	0.000	0.000
2/28/2010	3.17	1.45	0.46		8.05	2.73	0.00	0.000	0.000
3/31/2010	3.11	1.26	0.41		8.15	2.77	0.00	0.000	0.000
4/30/2010	2.97	1.21	0.41		8.24	2.81	0.00	0.000	0.000
5/31/2010	2.99	1.30	0.44		8.33	2.85	0.00	0.000	0.000
6/30/2010	2.96	1.10	0.37		8.42	2.88	0.00	0.000	0.000
7/31/2010	2.89	1.20	0.42		8.51	2.92	0.00	0.000	0.000
8/31/2010	2.87	1.33	0.47		8.60	2.96	0.00	0.000	0.000
9/30/2010	2.56	1.36	0.53		8.68	3.00	0.00	0.000	0.000
10/31/2010	2.42	1.42	0.59		8.75	3.04	0.00	0.000	0.000
11/30/2010	2.33	1.22	0.52		8.82	3.08	0.00	0.000	0.000
12/31/2010	2.63	1.32	0.50		8.90	3.12	0.00	0.000	0.000
1/31/2011	2.70	1.21	0.45		8.99	3.16	0.00	0.000	0.000
2/28/2011	2.76	1.14	0.41		9.06	3.19	0.00	0.000	0.000
3/31/2011	2.74	1.06	0.39		9.15	3.22	0.00	0.000	0.000
4/30/2011	2.57	0.95	0.37		9.23	3.25	0.00	0.000	0.000
5/31/2011	2.50	1.01	0.40		9.30	3.28	0.00	0.000	0.000
6/30/2011	2.17	0.87	0.40		9.37	3.31	0.00	0.000	0.000
7/31/2011	2.30	0.97	0.42		9.44	3.34	0.00	0.000	0.000
8/31/2011	2.80	1.23	0.44		9.53	3.38	0.00	0.000	0.000
9/30/2011	2.81	1.20	0.43		9.61	3.41	0.00	0.000	0.000
10/31/2011	2.38	1.12	0.47		9.68	3.45	0.00	0.000	0.000
11/30/2011	2.33	1.12	0.48		9.75	3.48	0.00	0.000	0.000
12/31/2011	1.67	0.87	0.52		9.81	3.51	0.00	0.000	0.000
1/31/2012	2.22	1.00	0.45		9.87	3.54	0.00	0.000	0.000
2/29/2012	3.77	1.03	0.27		9.98	3.57	0.00	0.000	0.000
3/31/2012	4.42	6.68	1.51		10.12	3.78	0.00	0.000	0.000
4/30/2012	6.77	12.02	1.78		10.32	4.14	0.00	0.000	0.000
5/31/2012	8.01	11.09	1.39		10.57	4.48	0.00	0.000	0.000
6/30/2012	8.09	10.94	1.35		10.82	4.81	0.00	0.000	0.000
7/31/2012	8.55	8.58	1.00		11.08	5.07	0.00	0.000	0.000
8/31/2012	8.81	8.77	1.00		11.35	5.35	0.00	0.000	0.000
9/30/2012	8.26	9.14	1.11		11.60	5.62	0.00	0.000	0.000
10/31/2012	7.06	7.66	1.08		11.82	5.86	0.00	0.000	0.000
11/30/2012	7.03	8.55	1.22		12.03	6.11	0.00	0.000	0.000
12/31/2012	6.81	5.53	0.81		12.24	6.29	0.00	0.000	0.000
1/31/2013	6.43	4.66	0.72		12.44	6.43	0.00	0.000	0.000
2/28/2013	6.53	4.39	0.67		12.62	6.55	0.00	0.000	0.000
3/31/2013	6.32	4.37	0.69		12.82	6.69	0.00	0.000	0.000
4/30/2013	5.90	3.87	0.66		13.00	6.80	0.00	0.000	0.000
5/31/2013	5.70	3.78	0.66		13.17	6.92	0.00	0.000	0.000
6/30/2013	5.58	3.72	0.67		13.34	7.03	0.00	0.000	0.000
7/31/2013	2.55	1.35	0.53		13.42	7.08	0.00	0.000	0.000
8/31/2013	2.32	0.85	0.37	13.32	13.49	7.10	0.41	3.996	0.019
9/30/2013	2.27	0.82	0.36	20.00	13.56	7.13	1.01	6.167	0.047
10/31/2013	2.35	0.85	0.36	19.42	13.63	7.15	1.62	5.771	0.074
11/30/2013	2.32	0.91	0.39	20.27	13.70	7.18	2.22	5.979	0.102

Date	Oil Rate (CD) m3/d	Water Rate (CD) m3/d	Water Oil Ratio m3/m3	Water Inj Rate (CD) m3/d	Cum Oil Prod Km3	Cum Water Prod Km3	Cum Water Inj Km3	Voidage Replacement Ratio	Cum Voidage Replacemt Ratio
12/31/2013	2.11	0.58	0.28	19.39	13.77	7.20	2.82	6.820	0.129



TUNDRA OIL & GAS PARTNERSHIP

SINCLAIR UNIT # 7 HZNTL 13C-11/4B-15-8-29

102/04-15-008-29W1/0

LICENSE #: 9299

BAKKEN FORMATION

Open Hole: 1078 – 2541 mKB

(955.41 – 956.78 TVD)

RESERVOIR PRESSURE SURVEY TEST

JUNE 26th - JULY 23rd, 2013

Prepared by: **DOLLCO Well Data Services**

e-mail: dollco@shaw.ca

PO Box 326
417A Mississippian Drive
Esteran, SK
S4A 2A4

Cell: (306) 421 - 7330
Fax: (306) 634 - 7976
Res: (306) 634 - 8761

E-mail: qualityw@sasktel.net

Pressure Survey Report

Company Information

Company Name	TUNDRA OIL & GAS PARTNERSHIP
Contact	CRAIG LANE
e-mail	craig.lane@tundraoilandgas.com
Phone	(204) 748-5894
Site Contact	MARK SKELTON
Site Phone	(204) 851-5689

Well Information

Well Name	SINCLAIR UNIT #7 HZNTL 13C-11/4B-15-8-29
Unique Well ID	102/04-15-008-29W1/00
Surface Location	13C-11 / 4B-15-8-29W1
Well License Number	9299
Well Type	Horizontal
Well Fluid Type	01 Oil
Field	SINCLAIR UNIT #7

KB Elevation (SL)	519.35 m
CF Elevation (SL)	515.35 m
GL Elevation (SL)	515.35 m
Distance from KB to CF (Log)	4.00 m
KB-GL Offset	4.00 m

Tubing ID	mm
Tubing OD	mm
Tubing Depth(Log KB)	m
Tubing Depth(TVD KB)	m
Casing ID	mm
Casing OD	177.8 mm
Casing Depth(Log KB)	2541.00 m
Casing Depth(TVD KB)	956.78 m
PBTD(Log KB)	m
PBTD(TVD KB)	m

Pressure Survey Report

Test Information

Well Name SINCLAIR UNIT #7 HZNTL 13C-11/4B-15-8-29
Unique Well ID 102/04-15-008-29W1/00
Surface Location 13C-11 / 4B-15-8-29W1
Well License Number 9299

Well Fluid Type 01 Oil
Test Purpose Initial Test
Test Type RESERVOIR PRESSURE SURVEY
Formation BAKKEN
Well Type Horizontal

Test/Prod. Interval Top KB (Log) 1078.00 m
Test/Prod. Interval Base KB (Log) 2541.00 m
MPP(Log KB) 1809.50 m
Test/Prod Interval Top KB (TVD) 955.41 m
Test/Prod. Interval Base m KB (TVD) 956.78 m
MPP(TVD KB) 956.10 m

Date/Time Gauge on Bottom 2013/06/26 03:26:00
Date/Time Gauge Off Bottom 2013/07/23 12:49:30
Time/Date Well Shut-In 2013/06/26 03:29:00

Tubing Pressure Initial kPa(a)
Casing Pressure Initial kPa(a)
Tubing Pressure: Final kPa(a)
Casing Pressure: Final kPa(a)

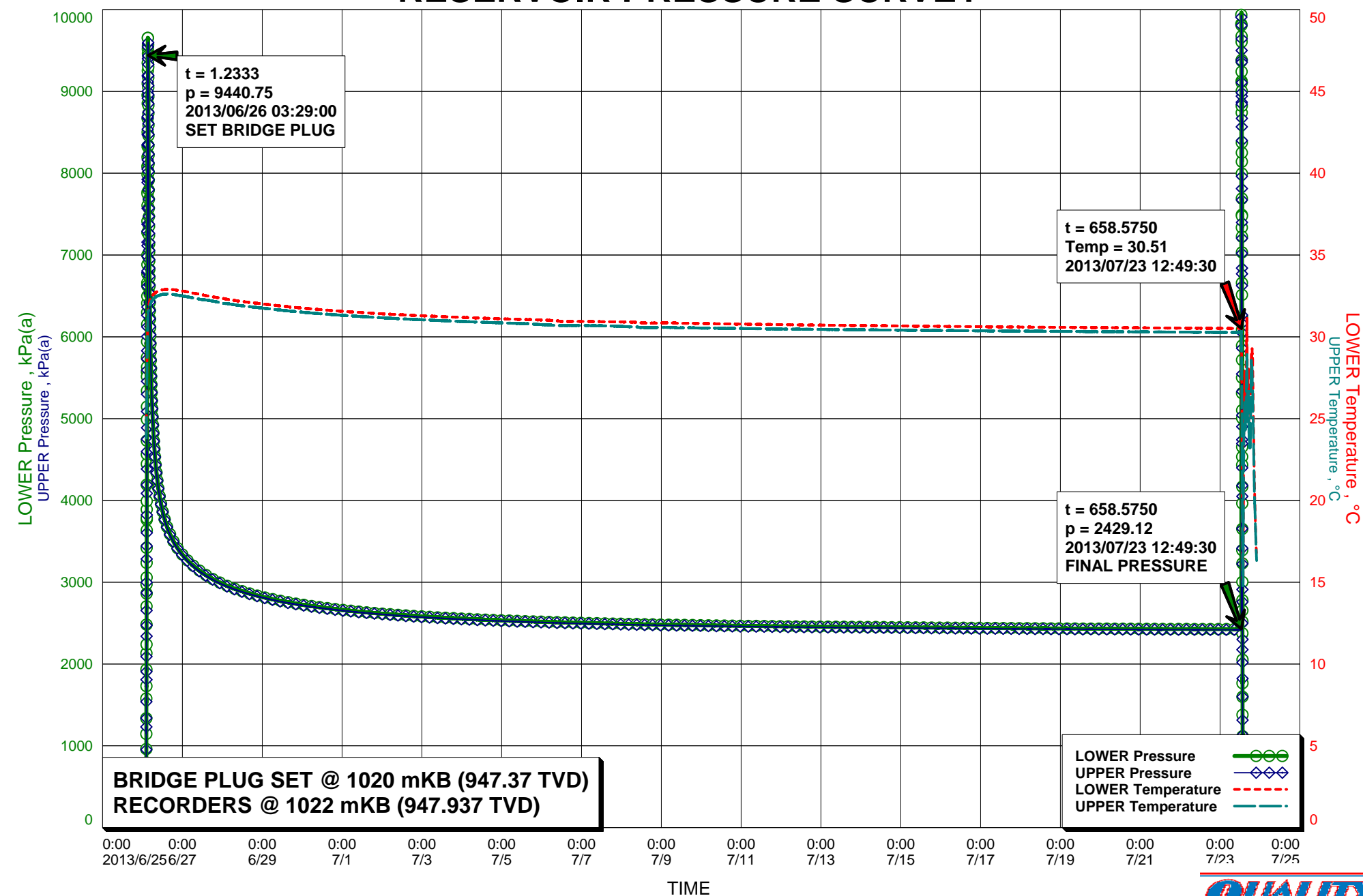
Last Measured Pressure at Run Depth 2429.12 kPa(a)
Reservoir Temperature 30.51 °C

Service Company Quality Wireline Services Ltd.
Representative IVORY HERMAN
Prepared By DOLLCO Well Data Services
Qualified By RICK DOLL
Report Date 2013/07/25

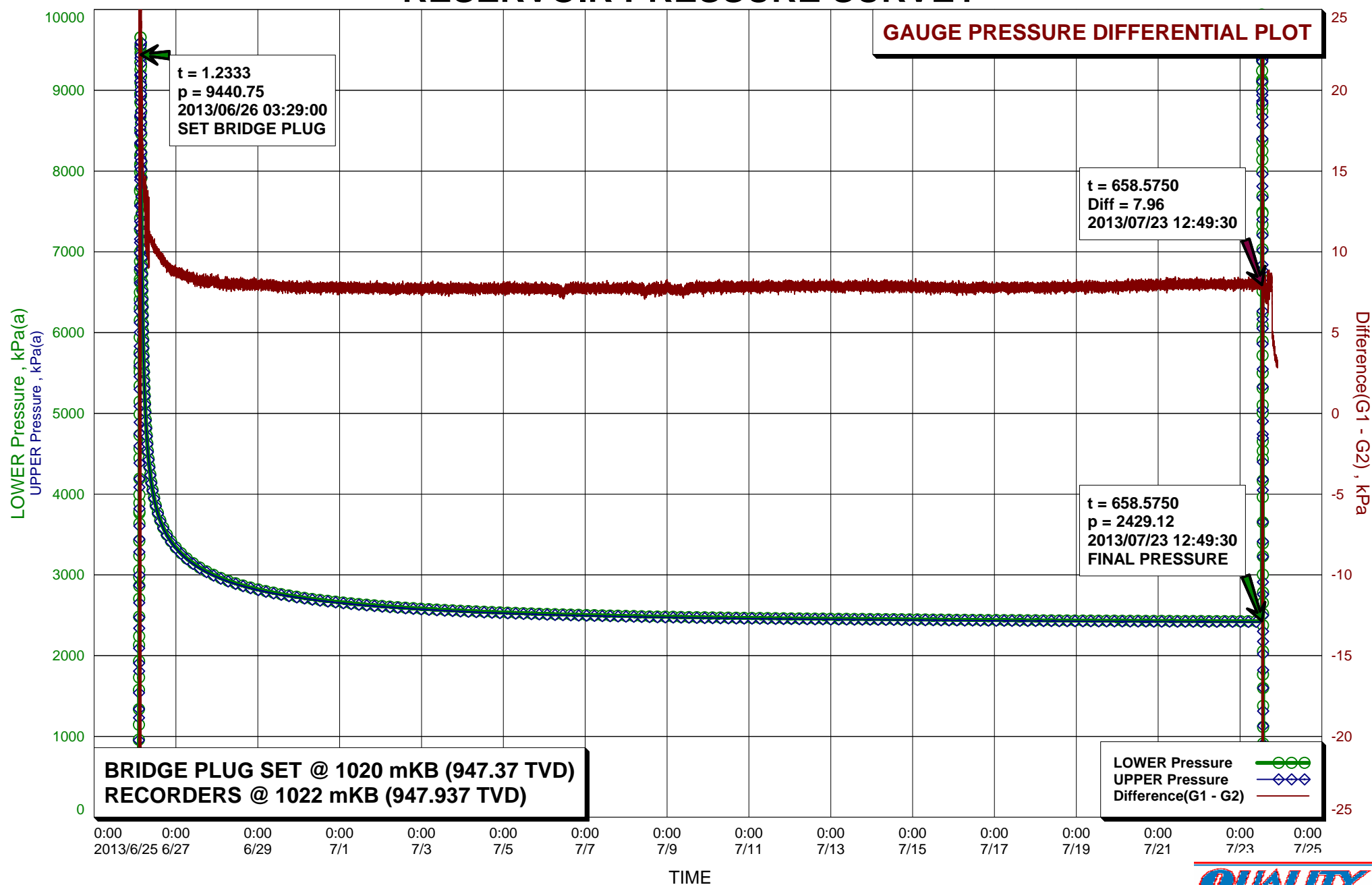
RECORDERS RUN BELOW A BRIDGE PLUG BY A DRILLING RIG,
THEN PULLED BY A SERVICE RIG



RESERVOIR PRESSURE SURVEY



RESERVOIR PRESSURE SURVEY



Recorder Information

Company Name	TUNDRA OIL & GAS PARTNERSHIP
Unique Well ID	102/04-15-008-29W1/00
Well Name	SINCLAIR UNIT #7 HZNTL 13C-11/4B-15-8-29
Formation	BAKKEN
Start Test Date	2013/06/26
Final Test Date	2013/07/23

Gauge 1

Gauge Name	LOWER	Gauge Type	ELECTRONIC
Gauge Serial Number	40417	Gauge Manufacturer	REAL TIME MEASUREMENTS
Run Depth (Log KB)	1022.00 m	Gauge Model	KC2 STRAIN
Date of Last Calibration	2011/05/01	Maximum Recorder Range	20680.00 kPa
Gauge Start Date	2013/06/26	Gauge Start Time	02:15:00
Gauge Stop Date	2013/07/23	Gauge Stop Time	22:00:00
Date Gauge On Bottom	2013/06/26	Time Gauge On Bottom	03:26:00
Date Gauge Off Bottom	2013/07/23	Time Gauge Off Bottom	12:49:30

Gauge 2

Gauge Name	UPPER	Gauge Type	ELECTRONIC
Gauge Serial Number	40338	Gauge Manufacturer	REAL TIME MEASUREMENTS
Run Depth (Log KB)	1021.70 m	Gauge Model	KC2 STRAIN
Date of Last Calibration	2011/05/01	Maximum Recorder Range	20680.00 kPa
Gauge Start Date	2013/06/26	Gauge Start Time	02:15:00
Gauge Stop Date	2013/07/23	Gauge Stop Time	22:00:00
Date Gauge On Bottom	2013/06/26	Time Gauge On Bottom	03:26:00
Date Gauge Off Bottom	2013/07/23	Time Gauge Off Bottom	12:49:30

RESERVOIR PRESSURE SURVEY

	LOWER Date yyyy/mm/dd	LOWER Clk Time hh:mm:ss	LOWER Time hr	LOWER Pres. kPa(a)	LOWER Temp. °C	UPPER Time hr	UPPER Pres. kPa(a)	UPPER Temp. °C	Diff. G1 - G2 kPa
1	2013/06/26	02:15:00	0.0000	576.88	24.15	0.0000	576.52	23.82	0.36
2	2013/06/26	02:15:00	0.0000	RIH, ACTIVATE RECORDERS S/N: 40417(L) & 40338(U)					
3	2013/06/26	02:15:30	0.0083	578.23	24.23	0.0083	575.95	23.91	2.27
4	2013/06/26	03:26:00	1.1833	9437.80	31.80	1.1833	9426.18	31.53	11.63
5	2013/06/26	03:26:00	1.1833	RECORDERS ON BOTTOM @ 1022 mKB (947.937 TVD)					
6	2013/06/26	03:26:30	1.1917	9444.91	31.80	1.1917	9438.55	31.53	6.37
7	2013/06/26	03:29:00	1.2333	9440.75	31.81	1.2333	9401.50	31.54	39.24
8	2013/06/26	03:29:00	1.2333	SET BRIDGE PLUG @ 1020 mKB (947.37 TVD)					
9	2013/06/26	03:29:30	1.2417	9366.79	31.81	1.2417	9329.37	31.55	37.42
10	2013/06/26	06:15:00	4.0000	4952.91	32.56	4.0000	4940.52	32.28	12.39
11	2013/06/26	10:15:30	8.0083	4056.40	32.82	8.0083	4045.80	32.55	10.59
12	2013/06/26	14:15:30	12.0083	3708.73	32.90	12.0083	3699.13	32.61	9.60
13	2013/06/26	18:15:30	16.0083	3513.73	32.88	16.0083	3504.32	32.59	9.41
14	2013/06/26	22:15:30	20.0083	3383.33	32.83	20.0083	3374.48	32.53	8.85
15	2013/06/27	02:15:30	24.0083	3284.71	32.76	24.0083	3276.01	32.46	8.70
16	2013/06/27	06:15:30	28.0083	3205.76	32.68	28.0083	3197.37	32.39	8.39
17	2013/06/27	10:15:30	32.0083	3140.67	32.61	32.0083	3132.24	32.30	8.43
18	2013/06/27	14:15:30	36.0083	3085.33	32.51	36.0083	3077.31	32.25	8.03
19	2013/06/27	18:15:30	40.0083	3038.07	32.44	40.0083	3029.97	32.18	8.10
20	2013/06/27	22:15:30	44.0083	2997.00	32.38	44.0083	2988.73	32.10	8.27
21	2013/06/28	02:15:30	48.0083	2960.67	32.31	48.0083	2952.72	32.03	7.95
22	2013/06/28	06:15:30	52.0083	2928.56	32.24	52.0083	2920.73	31.98	7.83
23	2013/06/28	10:15:30	56.0083	2900.03	32.18	56.0083	2892.25	31.92	7.77
24	2013/06/28	14:15:30	60.0083	2874.38	32.13	60.0083	2866.24	31.87	8.15
25	2013/06/28	18:16:00	64.0167	2850.74	32.08	64.0167	2842.65	31.82	8.09
26	2013/06/28	22:16:00	68.0167	2829.25	32.03	68.0167	2821.33	31.78	7.92
27	2013/06/29	02:16:00	72.0167	2809.69	31.99	72.0167	2801.72	31.73	7.97
28	2013/06/29	06:16:00	76.0167	2791.39	31.94	76.0167	2783.46	31.69	7.93
29	2013/06/29	10:16:00	80.0167	2774.77	31.90	80.0167	2766.58	31.64	8.19
30	2013/06/29	14:16:00	84.0167	2758.94	31.85	84.0167	2751.09	31.60	7.85
31	2013/06/29	18:16:00	88.0167	2744.31	31.81	88.0167	2736.55	31.56	7.76
32	2013/06/29	22:16:00	92.0167	2730.59	31.77	92.0167	2723.16	31.53	7.44
33	2013/06/30	02:16:00	96.0167	2717.94	31.74	96.0167	2710.25	31.49	7.69
34	2013/06/30	06:16:00	100.0167	2706.02	31.70	100.0167	2698.16	31.45	7.87
35	2013/06/30	10:16:00	104.0167	2694.86	31.67	104.0167	2687.18	31.42	7.67
36	2013/06/30	14:16:00	108.0167	2684.31	31.64	108.0167	2676.60	31.39	7.72
37	2013/06/30	18:16:00	112.0167	2674.41	31.61	112.0167	2666.53	31.35	7.88
38	2013/06/30	22:16:00	116.0167	2665.11	31.57	116.0167	2657.35	31.33	7.76
39	2013/07/01	02:16:00	120.0167	2656.32	31.55	120.0167	2648.35	31.30	7.97
40	2013/07/01	06:16:00	124.0167	2647.70	31.52	124.0167	2639.80	31.27	7.90

LOWER Serial Number: 40417 Start Date: 2013/06/26 02:15:00 Run Depth: 1022.00

UPPER Serial Number: 40338 Start Date: 2013/06/26 02:15:00 Run Depth: 1021.70

Print Filter: Print every 4 hour

RESERVOIR PRESSURE SURVEY

	LOWER Date yyyy/mm/dd	LOWER Clk Time hh:mm:ss	LOWER Time hr	LOWER Pres. kPa(a)	LOWER Temp. °C	UPPER Time hr	UPPER Pres. kPa(a)	UPPER Temp. °C	Diff. G1 - G2 kPa
41	2013/07/01	10:16:00	128.0167	2639.64	31.50	128.0167	2632.07	31.25	7.57
42	2013/07/01	14:16:00	132.0167	2632.17	31.47	132.0167	2624.49	31.23	7.68
43	2013/07/01	18:16:00	136.0167	2624.88	31.44	136.0167	2617.29	31.20	7.60
44	2013/07/01	22:16:00	140.0167	2618.05	31.42	140.0167	2610.42	31.18	7.64
45	2013/07/02	02:16:00	144.0167	2611.70	31.40	144.0167	2603.76	31.15	7.94
46	2013/07/02	06:16:00	148.0167	2605.22	31.38	148.0167	2597.61	31.13	7.61
47	2013/07/02	10:16:00	152.0167	2599.45	31.35	152.0167	2591.59	31.11	7.86
48	2013/07/02	14:16:00	156.0167	2593.73	31.33	156.0167	2585.93	31.09	7.80
49	2013/07/02	18:16:00	160.0167	2588.36	31.31	160.0167	2580.57	31.07	7.80
50	2013/07/02	22:16:00	164.0167	2583.07	31.30	164.0167	2575.49	31.05	7.59
51	2013/07/03	02:16:00	168.0167	2578.12	31.28	168.0167	2570.52	31.03	7.60
52	2013/07/03	06:16:00	172.0167	2573.28	31.26	172.0167	2565.49	31.01	7.79
53	2013/07/03	10:16:00	176.0167	2568.59	31.25	176.0167	2560.59	31.00	8.00
54	2013/07/03	14:16:00	180.0167	2564.09	31.23	180.0167	2556.52	30.98	7.57
55	2013/07/03	18:16:00	184.0167	2560.06	31.21	184.0167	2552.36	30.96	7.70
56	2013/07/03	22:16:00	188.0167	2555.86	31.20	188.0167	2548.17	30.94	7.69
57	2013/07/04	02:16:00	192.0167	2551.95	31.18	192.0167	2544.24	30.93	7.70
58	2013/07/04	06:16:00	196.0167	2548.26	31.16	196.0167	2540.54	30.91	7.72
59	2013/07/04	10:16:00	200.0167	2544.61	31.15	200.0167	2536.89	30.90	7.72
60	2013/07/04	14:16:00	204.0167	2541.05	31.14	204.0167	2533.51	30.88	7.54
61	2013/07/04	18:16:00	208.0167	2537.83	31.12	208.0167	2530.25	30.87	7.58
62	2013/07/04	22:16:00	212.0167	2534.72	31.11	212.0167	2526.99	30.86	7.72
63	2013/07/05	02:16:00	216.0167	2531.69	31.09	216.0167	2523.84	30.85	7.84
64	2013/07/05	06:16:00	220.0167	2528.57	31.08	220.0167	2520.88	30.83	7.68
65	2013/07/05	10:16:00	224.0167	2525.59	31.07	224.0167	2517.99	30.82	7.59
66	2013/07/05	14:16:00	228.0167	2522.70	31.06	228.0167	2515.02	30.80	7.67
67	2013/07/05	18:16:00	232.0167	2520.08	31.04	232.0167	2512.42	30.79	7.66
68	2013/07/05	22:16:00	236.0167	2517.46	31.03	236.0167	2509.77	30.76	7.69
69	2013/07/06	02:16:00	240.0167	2514.94	31.02	240.0167	2507.26	30.73	7.68
70	2013/07/06	06:16:00	244.0167	2512.40	31.00	244.0167	2504.68	30.71	7.72
71	2013/07/06	10:16:00	248.0167	2509.63	30.96	248.0167	2502.17	30.69	7.46
72	2013/07/06	14:16:00	252.0167	2507.59	30.94	252.0167	2499.81	30.69	7.78
73	2013/07/06	18:16:30	256.0250	2505.58	30.94	256.0250	2497.55	30.69	8.03
74	2013/07/06	22:16:30	260.0250	2503.61	30.94	260.0250	2495.68	30.69	7.93
75	2013/07/07	02:16:30	264.0250	2501.46	30.94	264.0250	2493.97	30.69	7.49
76	2013/07/07	06:16:30	268.0250	2499.49	30.94	268.0250	2491.74	30.69	7.75
77	2013/07/07	10:16:30	272.0250	2497.53	30.93	272.0250	2489.59	30.68	7.95
78	2013/07/07	14:16:30	276.0250	2495.45	30.93	276.0250	2487.90	30.67	7.56
79	2013/07/07	18:16:30	280.0250	2493.69	30.92	280.0250	2486.07	30.66	7.62
80	2013/07/07	22:16:30	284.0250	2491.97	30.91	284.0250	2484.25	30.64	7.72

LOWER Serial Number: 40417 Start Date: 2013/06/26 02:15:00 Run Depth: 1022.00

UPPER Serial Number: 40338 Start Date: 2013/06/26 02:15:00 Run Depth: 1021.70

Print Filter: Print every 4 hour

RESERVOIR PRESSURE SURVEY

	LOWER Date yyyy/mm/dd	LOWER Clk Time hh:mm:ss	LOWER Time hr	LOWER Pres. kPa(a)	LOWER Temp. °C	UPPER Time hr	UPPER Pres. kPa(a)	UPPER Temp. °C	Diff. G1 - G2 kPa
81	2013/07/08	02:16:30	288.0250	2490.14	30.91	288.0250	2482.27	30.63	7.87
82	2013/07/08	06:16:30	292.0250	2488.39	30.90	292.0250	2480.69	30.61	7.70
83	2013/07/08	10:16:30	296.0250	2486.50	30.89	296.0250	2478.69	30.59	7.81
84	2013/07/08	14:16:30	300.0250	2484.80	30.85	300.0250	2477.17	30.57	7.64
85	2013/07/08	18:16:30	304.0250	2483.31	30.85	304.0250	2475.68	30.57	7.63
86	2013/07/08	22:16:30	308.0250	2481.81	30.84	308.0250	2474.14	30.57	7.67
87	2013/07/09	02:16:30	312.0250	2480.36	30.85	312.0250	2472.67	30.58	7.69
88	2013/07/09	06:16:30	316.0250	2479.03	30.85	316.0250	2471.27	30.57	7.76
89	2013/07/09	10:16:30	320.0250	2477.47	30.82	320.0250	2470.00	30.54	7.47
90	2013/07/09	14:16:30	324.0250	2476.32	30.83	324.0250	2468.54	30.56	7.78
91	2013/07/09	18:16:30	328.0250	2475.05	30.83	328.0250	2467.45	30.55	7.60
92	2013/07/09	22:16:30	332.0250	2473.95	30.82	332.0250	2465.96	30.53	7.99
93	2013/07/10	02:16:30	336.0250	2472.87	30.81	336.0250	2464.82	30.53	8.05
94	2013/07/10	06:16:30	340.0250	2471.59	30.80	340.0250	2463.52	30.53	8.07
95	2013/07/10	10:16:30	344.0250	2470.27	30.80	344.0250	2462.63	30.53	7.64
96	2013/07/10	14:16:30	348.0250	2469.13	30.79	348.0250	2461.16	30.52	7.97
97	2013/07/10	18:16:30	352.0250	2468.01	30.79	352.0250	2460.29	30.51	7.73
98	2013/07/10	22:16:30	356.0250	2467.03	30.78	356.0250	2459.19	30.51	7.85
99	2013/07/11	02:16:30	360.0250	2466.10	30.77	360.0250	2458.18	30.51	7.92
100	2013/07/11	06:16:30	364.0250	2465.23	30.77	364.0250	2457.44	30.50	7.79
101	2013/07/11	10:16:30	368.0250	2464.09	30.76	368.0250	2456.27	30.49	7.81
102	2013/07/11	14:16:30	372.0250	2463.12	30.76	372.0250	2455.07	30.49	8.05
103	2013/07/11	18:16:30	376.0250	2462.05	30.75	376.0250	2454.10	30.49	7.94
104	2013/07/11	22:16:30	380.0250	2461.30	30.75	380.0250	2453.45	30.48	7.85
105	2013/07/12	02:16:30	384.0250	2460.43	30.74	384.0250	2452.63	30.48	7.80
106	2013/07/12	06:16:30	388.0250	2459.63	30.74	388.0250	2451.73	30.47	7.90
107	2013/07/12	10:16:30	392.0250	2458.81	30.73	392.0250	2451.13	30.47	7.68
108	2013/07/12	14:16:30	396.0250	2458.07	30.73	396.0250	2450.06	30.46	8.01
109	2013/07/12	18:16:30	400.0250	2457.15	30.72	400.0250	2449.29	30.46	7.87
110	2013/07/12	22:16:30	404.0250	2456.70	30.72	404.0250	2448.71	30.45	7.99
111	2013/07/13	02:16:30	408.0250	2455.87	30.71	408.0250	2447.95	30.45	7.92
112	2013/07/13	06:16:30	412.0250	2455.27	30.71	412.0250	2447.21	30.44	8.06
113	2013/07/13	10:16:30	416.0250	2454.68	30.70	416.0250	2446.84	30.44	7.84
114	2013/07/13	14:16:30	420.0250	2453.87	30.70	420.0250	2445.80	30.44	8.07
115	2013/07/13	18:16:30	424.0250	2453.27	30.70	424.0250	2445.49	30.44	7.79
116	2013/07/13	22:16:30	428.0250	2452.70	30.69	428.0250	2445.01	30.43	7.69
117	2013/07/14	02:16:30	432.0250	2452.18	30.69	432.0250	2444.35	30.43	7.83
118	2013/07/14	06:16:30	436.0250	2451.48	30.68	436.0250	2443.82	30.42	7.66
119	2013/07/14	10:16:30	440.0250	2451.04	30.68	440.0250	2443.19	30.42	7.85
120	2013/07/14	14:16:30	444.0250	2450.17	30.67	444.0250	2442.29	30.41	7.89

LOWER Serial Number: 40417 Start Date: 2013/06/26 02:15:00 Run Depth: 1022.00

UPPER Serial Number: 40338 Start Date: 2013/06/26 02:15:00 Run Depth: 1021.70

Print Filter: Print every 4 hour

RESERVOIR PRESSURE SURVEY

	LOWER Date yyyy/mm/dd	LOWER Clk Time hh:mm:ss	LOWER Time hr	LOWER Pres. kPa(a)	LOWER Temp. °C	UPPER Time hr	UPPER Pres. kPa(a)	UPPER Temp. °C	Diff. G1 - G2 kPa
121	2013/07/14	18:16:30	448.0250	2449.62	30.67	448.0250	2441.49	30.41	8.13
122	2013/07/14	22:16:30	452.0250	2448.44	30.67	452.0250	2440.49	30.41	7.95
123	2013/07/15	02:16:30	456.0250	2448.01	30.66	456.0250	2440.09	30.40	7.92
124	2013/07/15	06:16:30	460.0250	2447.20	30.66	460.0250	2439.30	30.40	7.90
125	2013/07/15	10:16:30	464.0250	2446.54	30.65	464.0250	2438.93	30.40	7.61
126	2013/07/15	14:16:30	468.0250	2445.84	30.65	468.0250	2437.91	30.39	7.93
127	2013/07/15	18:16:30	472.0250	2445.00	30.65	472.0250	2437.16	30.39	7.84
128	2013/07/15	22:16:30	476.0250	2444.20	30.64	476.0250	2436.48	30.39	7.72
129	2013/07/16	02:16:30	480.0250	2443.36	30.64	480.0250	2435.80	30.39	7.56
130	2013/07/16	06:16:30	484.0250	2442.84	30.64	484.0250	2435.26	30.38	7.58
131	2013/07/16	10:16:30	488.0250	2442.16	30.63	488.0250	2434.39	30.38	7.77
132	2013/07/16	14:16:30	492.0250	2441.72	30.63	492.0250	2434.07	30.37	7.65
133	2013/07/16	18:16:30	496.0250	2441.16	30.63	496.0250	2433.28	30.37	7.89
134	2013/07/16	22:16:30	500.0250	2440.54	30.62	500.0250	2432.83	30.37	7.71
135	2013/07/17	02:16:30	504.0250	2440.06	30.62	504.0250	2432.26	30.37	7.80
136	2013/07/17	06:16:30	508.0250	2439.37	30.62	508.0250	2431.54	30.36	7.83
137	2013/07/17	10:17:00	512.0333	2438.83	30.61	512.0250	2430.97	30.36	7.92
138	2013/07/17	14:17:00	516.0333	2438.31	30.61	516.0250	2430.44	30.36	7.82
139	2013/07/17	18:17:00	520.0333	2437.83	30.61	520.0250	2430.04	30.35	7.63
140	2013/07/17	22:17:00	524.0333	2437.39	30.60	524.0250	2429.35	30.35	8.05
141	2013/07/18	02:17:00	528.0333	2436.60	30.60	528.0250	2428.68	30.35	7.80
142	2013/07/18	06:17:00	532.0333	2436.02	30.59	532.0250	2428.14	30.35	7.70
143	2013/07/18	10:17:00	536.0333	2435.37	30.59	536.0250	2427.62	30.34	7.83
144	2013/07/18	14:17:00	540.0333	2434.96	30.59	540.0250	2427.22	30.34	7.81
145	2013/07/18	18:17:00	544.0333	2434.50	30.59	544.0250	2426.80	30.34	7.59
146	2013/07/18	22:17:00	548.0333	2434.21	30.58	548.0250	2426.40	30.34	7.85
147	2013/07/19	02:17:00	552.0333	2433.75	30.58	552.0250	2425.77	30.33	7.94
148	2013/07/19	06:17:00	556.0333	2433.29	30.58	556.0250	2425.59	30.33	7.75
149	2013/07/19	10:17:00	560.0333	2432.71	30.58	560.0250	2424.79	30.33	7.95
150	2013/07/19	14:17:00	564.0333	2432.34	30.57	564.0250	2424.45	30.32	7.85
151	2013/07/19	18:17:00	568.0333	2432.25	30.57	568.0250	2424.41	30.32	7.92
152	2013/07/19	22:17:00	572.0333	2431.83	30.57	572.0250	2423.87	30.32	7.93
153	2013/07/20	02:17:00	576.0333	2431.55	30.56	576.0250	2423.49	30.32	8.02
154	2013/07/20	06:17:00	580.0333	2431.23	30.56	580.0250	2423.29	30.31	7.87
155	2013/07/20	10:17:00	584.0333	2430.57	30.56	584.0250	2422.58	30.31	7.83
156	2013/07/20	14:17:00	588.0333	2430.36	30.56	588.0250	2422.23	30.31	8.07
157	2013/07/20	18:17:00	592.0333	2430.03	30.55	592.0250	2422.09	30.30	7.91
158	2013/07/20	22:17:00	596.0333	2429.61	30.55	596.0250	2421.95	30.30	7.97
159	2013/07/21	02:17:00	600.0333	2429.45	30.55	600.0250	2421.50	30.30	7.97
160	2013/07/21	06:17:00	604.0333	2429.08	30.54	604.0250	2421.09	30.30	8.09

LOWER Serial Number: 40417 Start Date: 2013/06/26 02:15:00 Run Depth: 1022.00

UPPER Serial Number: 40338 Start Date: 2013/06/26 02:15:00 Run Depth: 1021.70

Print Filter: Print every 4 hour

RESERVOIR PRESSURE SURVEY

	LOWER Date yyyy/mm/dd	LOWER Clk Time hh:mm:ss	LOWER Time hr	LOWER Pres. kPa(a)	LOWER Temp. °C	UPPER Time hr	UPPER Pres. kPa(a)	UPPER Temp. °C	Diff. G1 - G2 kPa
161	2013/07/21	10:17:00	608.0333	2428.60	30.54	608.0250	2420.55	30.30	8.13
162	2013/07/21	14:17:00	612.0333	2427.92	30.54	612.0250	2420.06	30.29	7.85
163	2013/07/21	18:17:00	616.0333	2428.07	30.54	616.0250	2419.88	30.29	8.14
164	2013/07/21	22:17:00	620.0333	2427.64	30.53	620.0250	2419.73	30.29	7.97
165	2013/07/22	02:17:00	624.0333	2427.60	30.53	624.0250	2419.27	30.29	8.22
166	2013/07/22	06:17:00	628.0333	2427.32	30.53	628.0250	2419.16	30.29	8.02
167	2013/07/22	10:17:00	632.0333	2426.99	30.53	632.0250	2418.99	30.28	8.08
168	2013/07/22	14:17:00	636.0333	2426.52	30.52	636.0250	2418.59	30.28	7.89
169	2013/07/22	18:17:00	640.0333	2426.43	30.52	640.0250	2418.47	30.28	7.91
170	2013/07/22	22:17:00	644.0333	2426.36	30.52	644.0250	2418.38	30.28	7.83
171	2013/07/23	02:17:00	648.0333	2426.06	30.52	648.0250	2418.11	30.27	8.09
172	2013/07/23	06:17:00	652.0333	2425.87	30.51	652.0250	2417.88	30.27	8.03
173	2013/07/23	10:17:00	656.0333	2425.68	30.51	656.0250	2417.61	30.27	7.99
174	2013/07/23	12:49:30	658.5750	2429.12	30.51	658.5750	2421.17	30.27	7.96
175	2013/07/23	12:49:30	658.5750	FINAL PRESSURE, UNSETTING BRIDGE PLUG					
176	2013/07/23	12:50:00	658.5833	9824.45	30.64	658.5833	2421.23	30.27	7403.22
177	2013/07/23	12:50:00	658.5833	BRIDGE PLUG IS UNSET					
178	2013/07/23	12:50:30	658.5917	9936.57	30.55	658.5917	9907.83	30.36	28.74
179	2013/07/23	12:58:30	658.7250	9813.76	29.14	658.7250	9807.34	29.11	6.42
180	2013/07/23	12:58:30	658.7250	PULL OUT OF HOLE					
181	2013/07/23	12:59:00	658.7333	9674.24	28.92	658.7333	9803.79	28.89	-129.55
182	2013/07/23	13:51:00	659.6000	97.47	15.18	659.6000	91.91	15.07	5.56
183	2013/07/23	13:51:00	659.6000	TOOLS AT SURFACE					
184	2013/07/23	13:51:30	659.6083	97.81	15.25	659.6083	92.00	15.17	5.81
185	2013/07/23	14:17:00	660.0333	101.73	23.39	660.0250	93.26	23.05	8.44
186	2013/07/23	18:17:00	664.0333	101.68	24.28	664.0250	93.15	23.61	8.62
187	2013/07/23	22:00:00	667.7500	96.83	16.47	667.7500	94.01	16.32	2.82

LOWER Serial Number: 40417 Start Date: 2013/06/26 02:15:00 Run Depth: 1022.00

UPPER Serial Number: 40338 Start Date: 2013/06/26 02:15:00 Run Depth: 1021.70

Print Filter: Print every 4 hour



DATE: June 26 th - July 24 th , 2013	COMPANY: Tundra Oil & Gas Partnership
WELLNAME: Sinclair Unit #7	ADDRESS: Virden, MB
LOCATION: (13-11) 04-15-08-29 W1	UWI: 102.04-15-008-29W1.00
FIELD: Sinclair Unit #7	FORMATION: Bakken
CO HQ REP: Craig Lane	PHONE: 1204 748 4409
FIELD REP: Mark Skelton	PHONE: 1204 851 5689
REPORTS TO (NAME & EMAIL ADDRESS): Eric Bjornsson - eric.bjornsson@tundraoilandgas.com Tyler Routledge - tyler.routledge@tundraoilandgas.com Tim Howell - tim.howell@tundraoilandgas.com Craig Lane - craig.lane@tundraoilandgas.com Bill Jenkins - bill.jenkins@tundraoilandgas.com Adam Berke - adam.berke@tundraoilandgas.com	

STATUS: Oil Well		TEST TYPE: Bride Plug
ESTIMATED H2S CONTENT: <10 ppm		ESTIMATED CO2 CONTENT: <10 ppm
PRODUCING THROUGH: Tubing		SHUT IN TIME/DATE: See Discription
KOP: 765 mKB	TVD: 960.85 mKB	LICENCE #: 9299
PBTD: N/A	TD: 2541 mKB	WELL TYPE: Horizontal
CASING SIZE: 177.8 mm	CSG WEIGHT: 34.23 / 29.76 kg/m	CSG DEPTH: 2541 mKB
TUBING SIZE: N/A	TBG WEIGHT: N/A	TBG DEPTH: N/A
Elevations KB: 519.35 mKB	GRD: 515.35 mKB	CF: 4 mKB

PRODUCING INTERVAL

TYPE: Open Hole	SIZE: N/A	INTERVAL: 1078 - 2541 mKB
-----------------	-----------	---------------------------

RECORDER INFORMATION

TOP S/N: 40338	FILE NAME: 13-11-04-15-08-29 W1	RANGE: 20,680 kPa
BOTTOM S/N: 40417	FILE NAME: 13-11-04-15-08-29 W1	RANGE: 20,680 kPa
TOP BATTERY S/N: S/N	BOTTOM BATTERY S/N: S/N	
CONNECT TIME: June 26 th , 2013 02:10:30	DISCONNECT TIME: July 24 th , 2013 12:21:30	

SURFACE TEMP: 24.5 C	LEASE CONDITION: Good
WIRELINE OPERATOR: Ivory Herman	PHONE: 1306 371 5613
WIRELINE ASSISSTANT: N/A	
DIRECTIONS: N/A	

DWG WELL HEAD PRESSURES:

TUBING (before survey): N/A	CASING (before survey): N/A
TUBING (after survey): N/A	CASING (after survey): N/A

FLUID LEVEL: N/A	RUN DEPTH: N/A
TIME ON BOTTOM: N/A	TIME OFF BOTTOM: N/A

GRADIENT STOPS

DEPTH mKB:	N/A	FROM:	N/A	UNTIL:	N/A
------------	-----	-------	-----	--------	-----

COMMENTS: Tools were ran in the well by a drilling rig to collect the BHP + BHT below a bridge plug. Tools were than pulled by a service rig.

DESCRIPTION OF WORK DONE:

Tools were ran in the well by a drilling rig to collect the BHP + BHT below a bridge plug. Tools were than pulled by a service rig.

June 26th, 2013
02:10:30 - Run in hole
03:26:00 - On bottom
03:27:00 - Bridge plug set @1020 mKB (recorders @1022 mKB)
July 23rd, 2013
12:49:30 - FINAL STABLE BHP + BHT
12:50:00 - Bridge plug un-set
12:58:30 - POOH
13:51:00 - Surface
July 24th, 2013
12:21:30 - Download data